



CABINET BASE PLANCHA TOP RANGE

CABINET BASE PLANCHA TOP RANGE



JTRH-36P

MODEL NO.	DESCRIPTION
<input type="checkbox"/> JTRH-18P	PLANCHA, CABINET BASE, 18"
<input type="checkbox"/> JTRH-24P	PLANCHA, CABINET BASE, 24"
<input type="checkbox"/> JTRH-30P	PLANCHA, CABINET BASE, 30"
<input type="checkbox"/> JTRH-36P	PLANCHA, CABINET BASE, 36"

Plancha is a direct contact cooking surface that can also be used as a hot top or burner. Focused center heat radiating outward allows for multiple heating and cooking areas on a single surface.

STANDARD FEATURES

- Polished 5/8" thick steel plancha plate
- Variable size multi-point gas connection—see utility information for details
- 14 gauge stainless steel grease trough
- Stainless steel front, sides and stub back
- Stainless steel 6" plate shelf
- 3/4" gas regulator (shipped loose, must be installed for proper operation)

AVAILABLE OPTIONS

- Stainless steel high riser
- Stainless steel double high riser
- Stainless steel high shelf
- Stainless steel double high shelf
- Stainless steel tubular high shelf
- Stainless steel tubular double high shelf
- Common plate shelf with Item(s) Model(s) _____
- Cap and cover manifold. Left Right
- Floor length legs

ACCESSORIES

- 6" casters, front two locking (5" diameter wheel)
- 36" flex hose with quick disconnect (3/4" connection)
- 48" flex hose with quick disconnect (3/4" connection)
- 1" gas pressure regulator (specify gas type)
- 1-1/4" gas pressure regulator (specify gas type)
- Stainless steel doors



For cooking

WWW.JADERANGE.COM

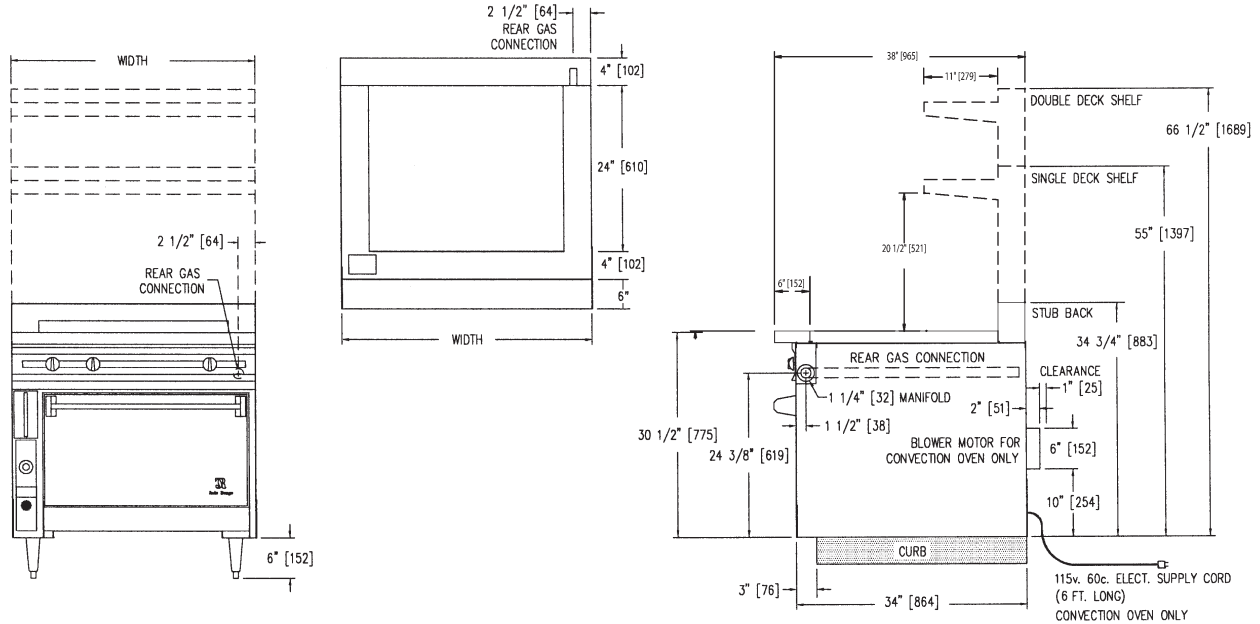
JADE RANGE, LLC., A MIDDLEBY COMPANY • 2650 Orbiter Street • Brea, CA 92821 • PHONE: 800-884-5233 FAX: 714-961-2550
Note: In line with their policy to continually improve products, Jade reserves the right to change materials and specifications without notice. PRINTED IN USA





CABINET BASE PLANCHA TOP RANGE

CABINET BASE DIMENSIONS



MODEL	BTUS	WIDTH	DEPTH	HEIGHT	APPX. SHP. WT.
CABINET BASE					
JTRH-18P	17,500	18"	38"	36-1/2"	250 LBS.
JTRH-24P	17,500	24"	38"	36-1/2"	300 LBS.
JTRH-30P	17,500	30"	38"	36-1/2"	450 LBS.
JTRH-36P	35,000	36"	38"	36-1/2"	530 LBS.

DESCRIPTION:

Cabinet base plancha top range. To be model #JTRH-____ manufactured by Jade Range LLC. Furnished with polished 5/8" thick steel plancha plate, variable size multi-point gas connection, 14 gauge stainless steel grease trough, stainless steel cabinet interior and exterior, stainless steel front, sides and stub back, stainless steel 6" plate shelf, stainless steel adjustable 6" legs

SPECIFY TYPE OF GAS WHEN ORDERING.

SPECIFY ALTITUDE WHEN ABOVE 2,000 ft.

NOTE: The company reserves the right to make substitutions of components without prior notice.

UTILITY INFORMATION - GAS:

- Ranges are supplied with 1-1/4" front manifold connection and a 1" or 3/4" capped rear manifold connection. For rear manifold connection, remove cap. Ranges are supplied with 3/4" gas pressure regulator. For 1-1/4" or 1" gas pressure regulator, see accessories. (Specify required front manifold cap and cover when ordering.)
- Required operating pressure:
 Natural Gas 5" W.C. minimum
 Propane Gas 10" W.C. minimum
 14" W.C. maximum

Note: This unit must be connected with the gas appliance regulator supplied.



WWW.JADERANGE.COM

JADE RANGE, LLC., A MIDDLEBY COMPANY • 2650 Orbiter Street • Brea, CA 92821 • PHONE: 800-884-5233 FAX: 714-961-2550
 Note: In line with their policy to continually improve products, Jade reserves the right to change materials and specifications without notice. PRINTED IN USA