



# 30" FOUR BURNER RANGE WITH "SPACE SAVER" OVEN

TITAN FOUR BURNER RANGE WITH "SPACE SAVER" OVEN



JTRH-4-30

## DESCRIPTION:

Heavy duty open burner range, with oven below. To be model #JTRH-4-30 manufactured by Jade Range. Provided with four 15" x 14" steel top grates. To have four 35,000 BTU/hr. cast iron open top burners controlled by infinite gas valves. One spill pan below all burners. To have 14 gauge all welded body with stainless steel front and sides. All gas tubing to be stainless steel throughout. To have 6" stainless steel adjustable legs.

### SPACE SAVER OVEN

To have conventional oven base with stainless steel lining. Oven sides and bottom to be removable without tools. Provide with two oven racks, with wires curled around main frame and chrome plated. Thermostat to adjust from 150°F to 550°F with 35,000 BTU burner. Oven interior 22-1/4" W x 14" H x 27-3/4" D.

**SPECIFY TYPE OF GAS WHEN ORDERING.**

**SPECIFY ALTITUDE WHEN ABOVE 2,000 ft.**

MODEL NO.	DESCRIPTION
<input type="checkbox"/> JTRH-4-30	4 OPEN BURNERS WITH "SPACE SAVER" OVEN
<input type="checkbox"/> JTRH-4-30C	4 OPEN BURNERS WITH "SPACE SAVER" CONVECTION OVEN

## STANDARD FEATURES

- Four individual lift-off steel top grates
- Four 35,000 BTU/hr cast iron open burners
- Variable size multi-point gas connection—see utility information for details
- One stainless steel pilot per burner
- 14 gauge all welded body construction
- Stainless steel oven interior (bottom and sides removable without tools on standard oven)
- Two chrome plated oven racks (wires curled and welded around main frame with no sharp ends)
- Oven control located in cool zone
- Oven accommodates full-size sheet pans
- Stainless steel gas tubing throughout
- Stainless steel front, sides and stub back
- Stainless steel adjustable 6" legs
- Stainless steel tray bed
- Stainless steel 6" plate shelf
- 3/4" gas regulator (shipped loose, must be installed for proper operation)

## AVAILABLE OPTIONS

- Stainless steel high riser
- Stainless steel double high riser
- Stainless steel high shelf
- Stainless steel double high shelf
- Stainless steel tubular high shelf
- Stainless steel tubular double high shelf
- Common plate shelf with Item(s) Model(s) \_\_\_\_\_
- Cap and cover manifold. Left  Right

## ACCESSORIES

- 6" casters, front two locking (5" diameter wheel)
- 36" flex hose with quick disconnect (3/4" connection)
- 48" flex hose with quick disconnect (3/4" connection)
- 1" gas pressure regulator (specify gas type)
- 1-1/4" gas pressure regulator (specify gas type)



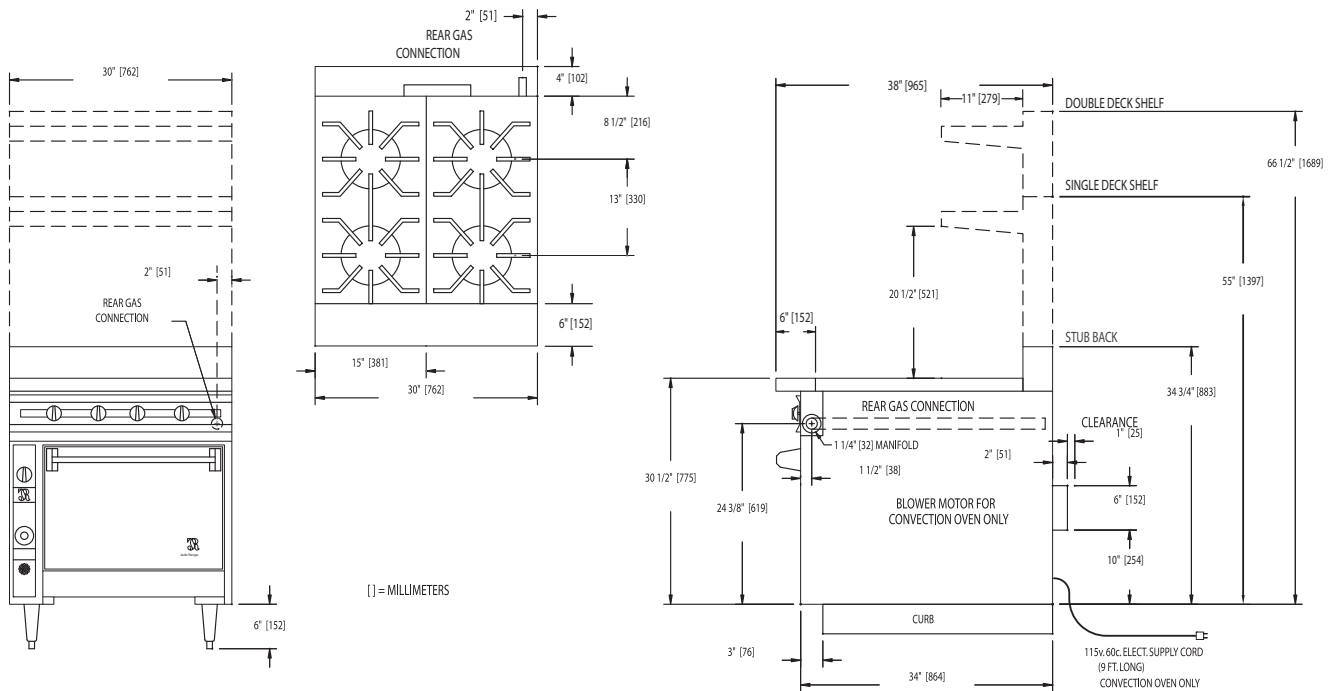
WWW.JADERANGE.COM

JADE RANGE, LLC., A MIDDLEBY COMPANY • 2650 Orbiter Street • Brea, CA 92821 • PHONE: 800-884-5233 FAX: 714-961-2550  
 Note: In line with their policy to continually improve products, Jade reserves the right to change materials and specifications without notice. PRINTED IN USA





# 30" FOUR BURNER RANGE WITH "SPACE SAVER" OVEN



MODEL	BTUS	WIDTH	DEPTH	HEIGHT	APPX. SHP. WT.
JTRH-4-30	175,000	30"	38"	SEE DRAWING	580 LBS.
JTRH-4-30C	170,000	30"	38"	SEE DRAWING	630 LBS.

### CONVECTION OVEN ONLY:

- Power Supply: 115/60/1 - 6 foot cord with 3 prong plug
- Total maximum amps 4.0/oven
- Electronic Spark Ignitor: activated by power switch, ignites standing pilot
- Fan Switch: three positions, on for normal operation, on for quick cool down, off.

### NOTE: SPECIFY TYPE OF GAS WHEN ORDERING.

### UTILITY INFORMATION:

- Ranges are supplied with 1-1/4" front manifold connection and a 1" or 3/4" capped rear manifold connection. For rear manifold connection, remove cap. Ranges are supplied with 3/4" gas pressure regulator. For 1-1/4" or 1" gas pressure regulator, see accessories. (Specify required front manifold cap and cover when ordering.)

- Required operating pressure:  
 Natural Gas 5" W.C. minimum  
 Propane Gas 10" W.C. minimum  
 14" W.C. maximum

**Note:** This unit must be connected with the gas appliance regulator supplied.