



CABINET BASE OPEN BURNER RANGE (18" SECTIONS)

TITAN CABINET BASE OPEN BURNER RANGE (18" SECTIONS)



JTRH-4 with optional high shelf



JTRH-2

| MODEL NO. | DESCRIPTION |
|---------------------------------|------------------------|
| <input type="checkbox"/> JTRH-2 | 18" TWO OPEN BURNERS |
| <input type="checkbox"/> JTRH-4 | 36" FOUR OPEN BURNERS |
| <input type="checkbox"/> JTRH-8 | 72" EIGHT OPEN BURNERS |

STANDARD FEATURES

- Individual lift-off steel top grates
- 35,000 BTU/hr cast iron open burners
- Variable size multi-point gas connection—see utility information for details
- One stainless steel pilot per burner
- 14 gauge all stainless steel welded body construction
- Stainless steel cabinet interior and exterior
- Stainless steel gas tubing throughout
- Stainless steel front, sides, stub back and bottom
- Stainless steel 6" plate shelf
- Stainless steel adjustable 6" legs
- 3/4" gas regulator (shipped loose, must be installed for proper operation)

AVAILABLE OPTIONS

- Polished steel top grate in lieu of cast iron
- Stainless steel high riser
- Stainless steel double high riser
- Stainless steel high shelf
- Stainless steel double high shelf
- Stainless steel tubular high shelf
- Stainless steel tubular double high shelf
- Stainless steel doors
- Common plate shelf with Item(s) Model(s) _____
- Cap and cover manifold. Left Right

ACCESSORIES

- 6" casters, front two locking (5" diameter wheel)
- 36" flex hose with quick disconnect (3/4" connection)
- 48" flex hose with quick disconnect (3/4" connection)
- 1" gas pressure regulator (specify gas type)
- 1-1/4" gas pressure regulator (specify gas type)



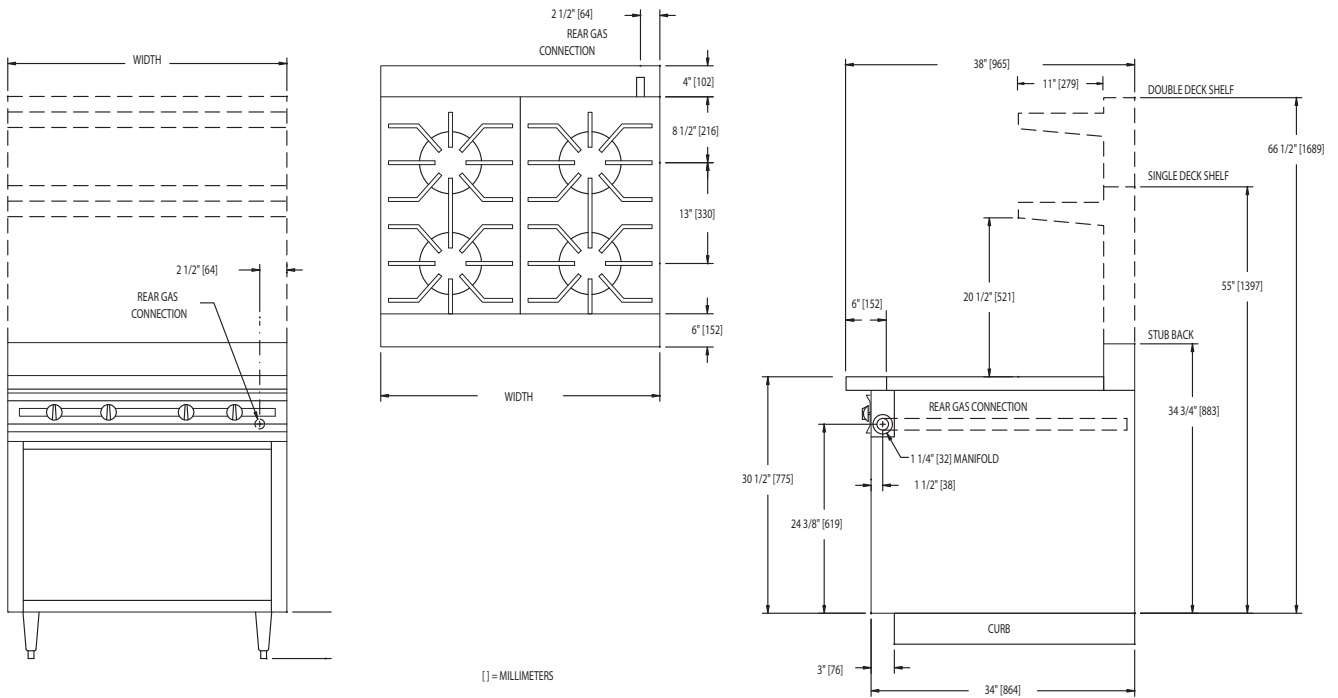
WWW.JADERANGE.COM

JADE RANGE, LLC., A MIDDLEBY COMPANY • 2650 Orbiter Street • Brea, CA 92821 • PHONE: 800-884-5233 FAX: 714-961-2550
 Note: In line with their policy to continually improve products, Jade reserves the right to change materials and specifications without notice. PRINTED IN USA





CABINET BASE OPEN BURNER RANGE (18" SECTIONS)



| MODEL | BTUS | WIDTH | DEPTH | HEIGHT | APPX. SHP. WT. |
|--------|---------|-------|-------|-------------|----------------|
| JTRH-2 | 70,000 | 18" | 38" | SEE DRAWING | 240 LBS. |
| JTRH-4 | 140,000 | 36" | 38" | SEE DRAWING | 480 LBS. |
| JTRH-8 | 280,000 | 72" | 38" | SEE DRAWING | 960 LBS. |

DESCRIPTION:

Heavy duty cabinet base 18" section open burner range. To be model #JTRH _____ manufactured by Jade Range. Steel top grates. Provide with (35,000 BTU/hr.) open burners controlled by infinite gas valves. To have 14 gauge all welded body with stainless steel front, sides, back and bottom. All gas tubing to be stainless steel throughout. To have 6" stainless steel adjustable legs.

SPECIFY TYPE OF GAS WHEN ORDERING.

SPECIFY ALTITUDE WHEN ABOVE 2,000 ft.

UTILITY INFORMATION (GAS):

- Ranges are supplied with 1-1/4" front manifold connection and a 1" or 3/4" capped rear manifold connection. For rear manifold connection, remove cap. Ranges are supplied with 3/4" gas pressure regulator. For 1-1/4" or 1" gas pressure regulator, see accessories. (Specify required front manifold cap and cover when ordering.)

- Required operating pressure:
 Natural Gas 5" W.C. minimum
 Propane Gas 10" W.C. minimum
 14" W.C. maximum

Note: This unit must be connected with the gas appliance regulator supplied.