



CABINET BASE "STEP-UP" RANGE

TITAN CABINET BASE "STEP-UP" RANGE



*JTRHE-3-3
with JSB-36RM range mounted salamander*

MODEL NO.	DESCRIPTION
<input type="checkbox"/> JTRHE-1-1	12" OPEN BURNERS—1 IN FRONT, 1 IN REAR
<input type="checkbox"/> JTRHE-2-2	24" OPEN BURNERS—2 IN FRONT, 2 IN REAR
<input type="checkbox"/> JTRHE-3-3	36" OPEN BURNERS—3 IN FRONT, 3 IN REAR
<input type="checkbox"/> JTRHE-4-4	48" OPEN BURNERS—4 IN FRONT, 4 IN REAR
<input type="checkbox"/> JTRHE-5-5	60" OPEN BURNERS—5 IN FRONT, 5 IN REAR
<input type="checkbox"/> JTRHE-6-6	72" OPEN BURNERS—6 IN FRONT, 6 IN REAR

STANDARD FEATURES

- Individual lift-off steel top grates
- 30,000 BTU/hr cast iron open burners
- Variable size multi-point gas connection—see utility information for details
- One stainless steel pilot per burner
- 14 gauge all welded body construction
- Stainless steel cabinet interior and exterior
- Stainless steel gas tubing throughout
- Stainless steel front, sides, stub back and bottom
- Stainless steel 6" plate shelf
- Stainless steel adjustable 6" legs
- 3/4" gas regulator (shipped loose, must be installed for proper operation)

AVAILABLE OPTIONS

- Stainless steel high riser
- Stainless steel double high riser
- Stainless steel high shelf
- Stainless steel double high shelf
- Stainless steel tubular high shelf
- Stainless steel tubular double high shelf
- Stainless steel doors
- Common plate shelf with Item(s) Model(s) _____
- Cap and cover manifold. Left Right

ACCESSORIES

- 6" casters, front two locking (5" diameter wheel)
- 36" flex hose with quick disconnect (3/4" connection)
- 48" flex hose with quick disconnect (3/4" connection)
- 1" gas pressure regulator (specify gas type)
- 1-1/4" gas pressure regulator (specify gas type)



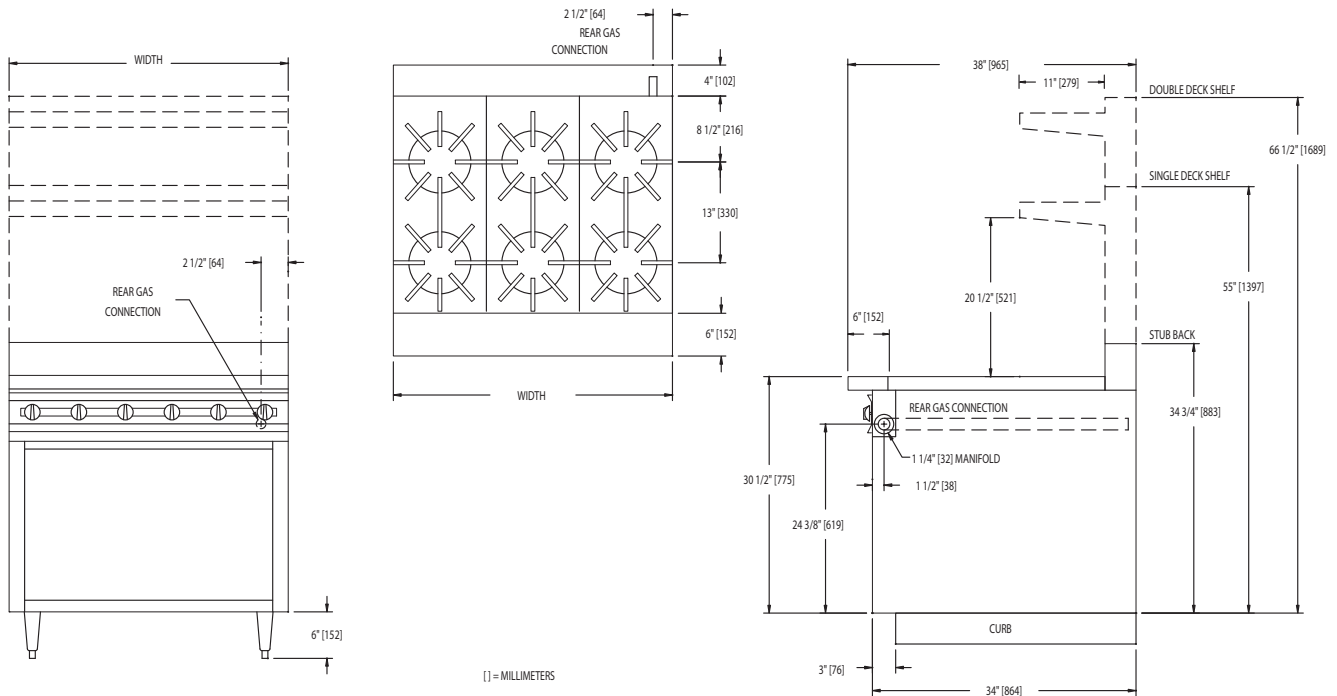
WWW.JADERANGE.COM

JADE RANGE, LLC., A MIDDLEBY COMPANY • 2650 Orbiter Street • Brea, CA 92821 • PHONE: 800-884-5233 FAX: 714-961-2550
Note: In line with their policy to continually improve products, Jade reserves the right to change materials and specifications without notice. PRINTED IN USA





CABINET BASE "STEP-UP" RANGE



MODEL	BTUS	WIDTH	DEPTH	HEIGHT	APPX. SHP. WT.
JTRHE-1-1	70,000	12"	38"	SEE DRAWING	180 LBS.
JTRHE-2-2	140,000	24"	38"	SEE DRAWING	265 LBS.
JTRHE-3-3	210,000	36"	38"	SEE DRAWING	490 LBS.
JTRHE-4-4	280,000	48"	38"	SEE DRAWING	650 LBS.
JTRHE-5-5	350,000	60"	38"	SEE DRAWING	810 LBS.
JTRHE-6-6	420,000	72"	38"	SEE DRAWING	980 LBS.

DESCRIPTION:

Heavy duty cabinet base "Step-up" range. To be model # JTRHE _____ manufactured by Jade Range. Each burner to have individual lift off top grates. Top grate supports to be 5/8" thick steel plate. Provide with (30,000 BTU/hr.) open burners controlled by infinite gas valves. To have 14 gauge all welded body with stainless steel front, sides, back and bottom. All gas tubing to be stainless steel throughout. To have 6" stainless steel adjustable legs.

SPECIFY TYPE OF GAS WHEN ORDERING.

SPECIFY ALTITUDE WHEN ABOVE 2,000 ft.

UTILITY INFORMATION (GAS):

- Ranges are supplied with 1-1/4" front manifold connection and a 1" or 3/4" capped rear manifold connection. For rear manifold connection, remove cap. Ranges are supplied with 3/4" gas pressure regulator. For 1-1/4" or 1" gas pressure regulator, see accessories. (Specify required front manifold cap and cover when ordering.)
- Required operating pressure:
 - Natural Gas 5" W.C. minimum
 - Propane Gas 10" W.C. minimum
 - 14" W.C. maximum

Note: This unit must be connected with the gas appliance regulator supplied.