



"ETNS" Stainless Steel Enclosed Work Tables

w/ Stainless Steel Base, Panels and Undershelf
w/ Sliding Doors

w/ 1-3/4" Thick
Hard Maple
Top, SC style
top



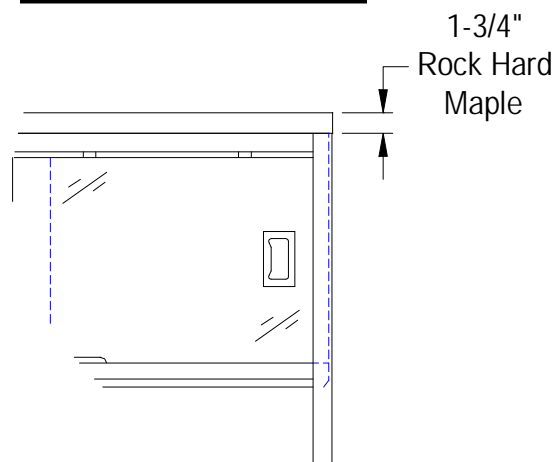
AUTOQUOTES



1-3/4 MAPLE TOP			
24"WIDE	Qty	30"WIDE	Qty
ETNS01		ETNS06	
ETNS02		ETNS07	
ETNS03		ETNS08	
ETNS03A		ETNS08A	
ETNS04		ETNS09	
ETNS04A		ETNS09A	
ETNS05		ETNS10	

FEATURES:

- * 1-3/4" Thick Hard Maple Top top style "SC" flat top
- * Maple top is finished with penetrating oil with optional natural clear Varnique Finish
- * Stainless Steel Top, Cabinet and Undershelf Type 300 stainless steel with # 4 polish, satin finish
- * Undershelf is secured in a fixed position, 14 7/8" above floor
- * Adjustable bullet feet
- * Shipped Standard Welded Set-Up
- * Optional drawers, casters, pot racks, etc. available
- * All models are approved by the National Sanitation Foundation and the U.S. Department of Agriculture.



CONSTRUCTION:

Top: Stainless Steel Tops are TIG welded, Exposed welds are polished to match adjacent surface.

MATERIAL:

Top: Laminated Hard Rock Maple
 Doors: 18 gauge stainless steel
 Type 300 stainless steel with # 4 polish, satin finish
 Shelf: 18 gauge type 300 stainless steel # 4 polish, satin finish
 # 4 polish, satin finish
 Legs: 1 1/2" Square O.D., 16 gauge type 300 tubular stainless steel
 # 4 polish, satin finish
 Panels: 22 gauge stainless steel
 Type 300 stainless steel with # 4 polish, satin finish
 Feet: 1" adjustable stainless steel feet

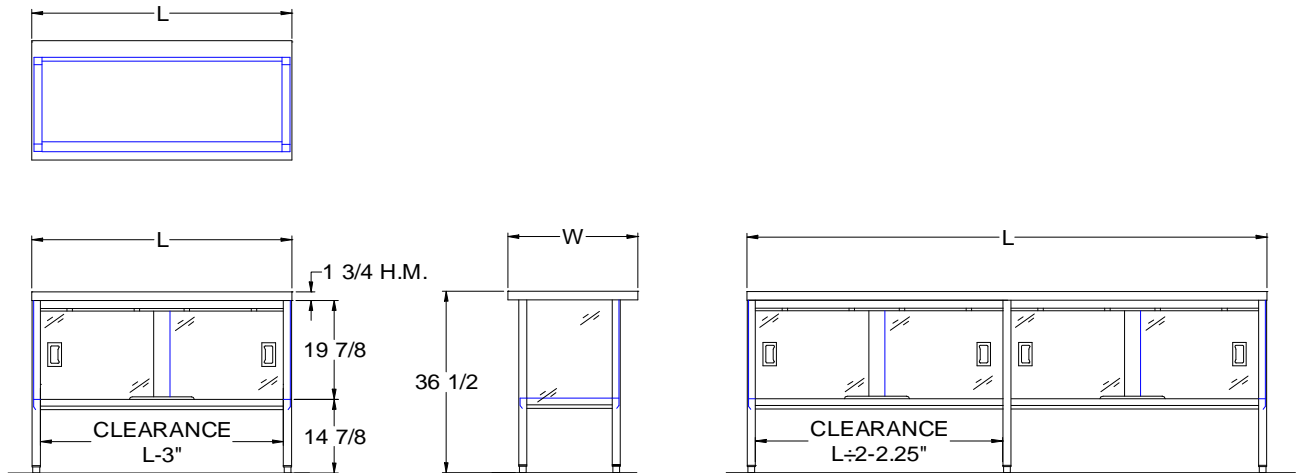
OPTIONAL ACCESSORIES

	MODEL #	Qty
CASTERS		
OVERSHELVES		
POT RACK		
INTERMEDIATE SHELF		
S/S BUN PAN RACK		

John Boos & Co

3601 S. Banker Street - Effingham, IL 62401
 Phone: 217-347-7701 - Fax: 217-347-7705
 Email: sales@johnboos.com - Web-site: www.johnboos.com

DETAILED SPECIFICATIONS



Shipped Welded Set-Up
 Units 7 ft. and larger are furnished with six legs.
 All dimensions are typical.
 Tolerance +/- .500".

Finished size of undershelf.
 Shelf length = length minus 4.875"
 Shelf width = width minus 4.25"

1-3/4" MAPLE TOP

L	24" WIDE	WT.	30" WIDE	WT.
48	ETNS01	140	ETNS06	160
60	ETNS02	170	ETNS07	196
72	ETNS03	195	ETNS08	228
84	ETNS03A	230	ETNS08A	257
96	ETNS04	265	ETNS09	285
108	ETNS04A	293	ETNS09A	336
120	ETNS05	320	ETNS10	387

John Boos & Co

3601 S. Banker Str. - Effingham, IL 62401 Phone: 217-347-7701 - Fax: 217-347-7705
 Email: sales@johnboos.com - Web-site: www.johnboos.com



July 2013

John Boos is constantly engaged in a program of improving products and therefore reserves the right to change specification without prior notice