



"FBLG" Stainless Steel Top Work Tables

BUDGET SERIES -----BUDGET SERIES -----BUDGET SERIES -----

w/ 18 Gauge Stainless Steel Work Top
w/ Galvanized Base and Undershelf

| | | | |
|---------|-------|-----|-------|
| Item # | _____ | Qty | _____ |
| Model # | _____ | | |
| Project | _____ | | |



AUTOQUOTES

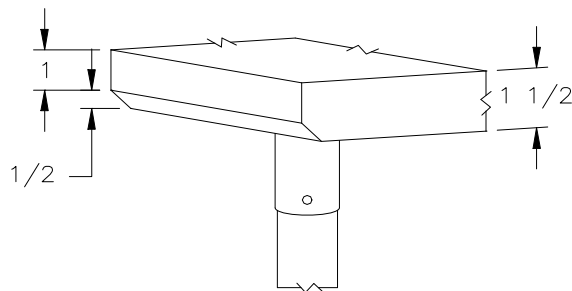


| 18" WIDE | Qty | 24" WIDE | Qty | 30" WIDE | Qty |
|----------|-----|----------|-----|----------|-----|
| -- | | FBLG2424 | | -- | |
| -- | | FBLG3024 | | FBLG3030 | |
| FBLG3618 | | FBLG3624 | | FBLG3630 | |
| FBLG4818 | | FBLG4824 | | FBLG4830 | |
| FBLG6018 | | FBLG6024 | | FBLG6030 | |
| FBLG7218 | | FBLG7224 | | FBLG7230 | |
| -- | | FBLG8424 | | FBLG8430 | |
| FBLG9618 | | FBLG9624 | | FBLG9630 | |

FEATURES:

- * 18 Gauge Stainless Steel Top
Type 430 stainless steel mechanically polished, satin finish
- * Top is Sound Deadened
- * 1 1/2" Stallion Edge on front and rear with side edges 90 degree bend down for table line-up
- * Galvanized Base and Undershelf
- * Undershelf is adjustable to desired height
- * Adjustable bullet feet
- * Shipped knocked-down, easy - to - assemble
- * All models are approved by the National Sanitation Foundation and the U.S. Department of Agriculture.

Note: FBLG" standard w/stallion edge front and rear. For 1 1/2" backsplash, use prefix "U" I.E. UFBLGO69, same price.



CONSTRUCTION:

Top: Stainless Steel Tops are TIG welded, Exposed welds are polished to match adjacent surface.

MATERIAL:

- Top: 18 gauge stainless steel
Type 430 stainless steel mechanically polished, satin finish
- Shelf: 18 gauge Galvanized Steel
- Legs: 1 5/8" Round O.D., 16 gauge tubular galvanized steel
- Gussets: Galvanized Steel
- Feet: 1" adjustable plastic bullet feet

STALLION
SAFETY
EDGE

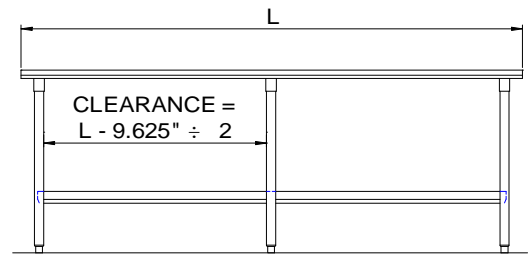
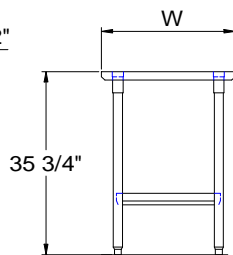
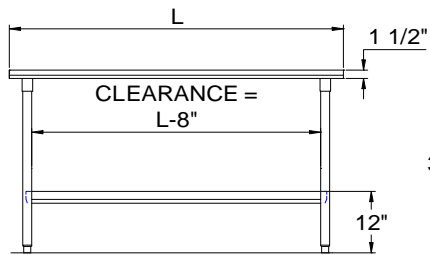
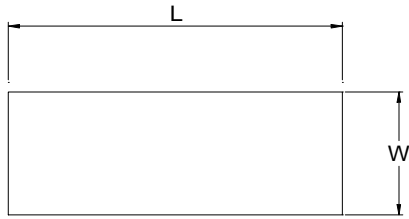
**OPTIONAL
ACCESSORIES**

| | MODEL # | Qty |
|------------------------|---------|-----|
| REAR 1-1/2" BACKSPLASH | | |

John Boos & Co

3601 South Banker Street - Effingham, IL 62401
Phone: 217-347-7701 - Fax: 217-347-7705
Email: sales@johnboos.com - Web-site: www. johnboos.com

DETAILED SPECIFICATIONS



All units ship unassembled for reduced shipping cost.
 Units 7 ft. and larger are furnished with six legs.
 All dimensions are typical.
 Tolerance +/- .500".

Finished size of undershelf.
 Shelf length = length minus 4.875"
 Shelf width = width minus 4.25"

18 GAUGE TOP w/ GALVANIZED LEGS & UNDERSHELF

| L | 18" WIDE | WT. | 24" WIDE | WT. | 30" WIDE | WT. |
|----|----------|-----|----------|-----|----------|-----|
| 24 | -- | | FBLG2424 | 40 | -- | 59 |
| 30 | -- | | FBLG3024 | 45 | FBLG3030 | 50 |
| 36 | FBLG3618 | | FBLG3624 | 50 | FBLG3630 | 56 |
| 48 | FBLG4818 | | FBLG4824 | 61 | FBLG4830 | 69 |
| 60 | FBLG6018 | | FBLG6024 | 71 | FBLG6030 | 82 |
| 72 | FBLG7218 | | FBLG7224 | 83 | FBLG7230 | 94 |
| 84 | -- | | FBLG8424 | 103 | FBLG8430 | 126 |
| 96 | FBLG9618 | | FBLG9624 | 111 | FBLG9630 | 128 |

John Boos & Co

3601 South Banker - Effingham, IL 62401 Phone: 217-347-7701 - Fax: 217-347-7705
 Email: sales@johnboos.com - Web-site: www.johnboos.com



July 2013

John Boos is constantly engaged in a program of improving products and therefore reserves the right to change specification without prior notice