

Cucina Milano

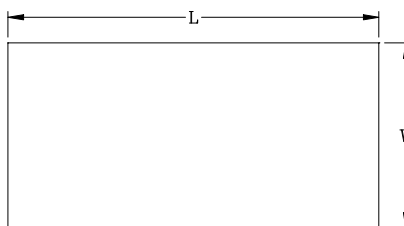


FEATURES:

- 1-1/2" Thick Top (Food Service Grade Stainless 18/8)
- Heavy Duty Stainless Top Reinforced With Solid Underlayment
- Maple Base
- Dovetailed Maple Drawers
- Shipped Knocked Down
- 2 Cartons

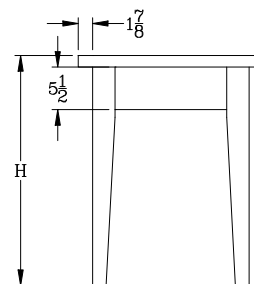
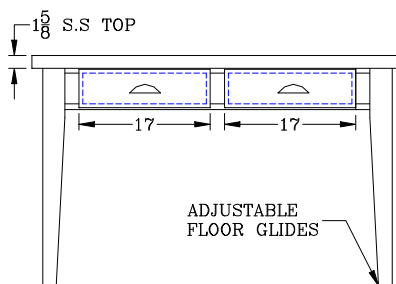
36" Height - Add a "C" after the Model Number

| Model | Size | Wt |
|---------|---------|-----|
| MIL4824 | 48"x24" | 140 |
| MIL6030 | 60"x30" | 170 |
| MIL6036 | 60"x36" | 197 |



30" Height - Add a "D" after the Model Number

| Model | Size | Wt |
|---------|---------|-----|
| MIL4824 | 48"x24" | 138 |
| MIL6030 | 60"x30" | 168 |
| MIL6036 | 60"x36" | 195 |



MATERIAL:

Top: Heavy Duty 18 Gauge Stainless Top
Reinforced With Solid Underlayment

Legs: Base, Hardwood

John Boos & Co

3601 S Banker Str. - Effingham, IL 62401
Phone: 217-347-7701 - Fax: 217-347-7705

Email: sales@johnboos.com - Web-site: www.johnboos.com