



# "PB-SOSINK" Mobile Sink & Silver Soak Sink

One Compartment Mobile Sink  
w/ Stainless Steel Base



16 ga. 304 S/S WELDED BOWLS

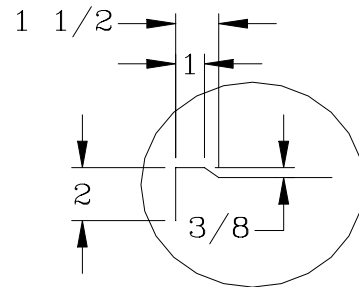
20" HIGH 16 Gauge		Qty	34" HIGH 16 Gauge		Qty
PB-SOSINK18-H20			PB-SOSINK18-H34		
PB-SOSINK20-H20			PB-SOSINK20-H34		
PB-SOSINK24-H20			PB-SOSINK24-H34		

**Bowl Sizes:**

- 18" X 18"
- 20" X 20"
- 24" X 24"

**FEATURES:**

- \* Standard 16 Gauge Stainless Steel Construction  
Type 304 stainless steel with # 3 polish, satin finish
- \* 8" Deep, 16 Gauge Stainless Steel Bowls  
Type 304 stainless steel with # 3 polish, satin finish
- \* All Corners, both vertical and horizontal, coved at 5/8" radius
- \* Bottoms of bowls formed for drainage to 3-1/2" diameter die stamped opening
- \* Top is finished with a 1-1/2" x 1" **No-Drip Edge**, with a 2" turn down on all sides
- \* Standard legs 1-5/8" diameter, 16 gauge stainless steel  
Type 304 stainless steel with # 3 polish, satin finish
- \* Legs located directly under sink bowls, providing increased stability and maximum weight support
- \* Large **Swivel Caster** to insure versatile mobility
- \* Twist Lever Waste for easy clean in remote operations



marine edge  
detail view

**CONSTRUCTION:**

- Top: Stainless Steel Sinks are TIG welded, Exposed welds are polished to match adjacent surface.
- Bases: Stainless Steel Bases are MIG welded

**MATERIAL:**

- Bowls & 16 gauge stainless Steel
- Top: Type 304 stainless steel with # 3 polish, satin finish
- Legs: 1 5/8" Round O.D., 16 gauge stainless steel  
Type 304 stainless steel with # 3 polish, satin finish
- Bracing: 1 1/4" Round O.D., 16 gauge stainless steel  
Type 304 stainless steel with # 3 polish, satin finish
- Gussets: Stainless Steel
- Caster: 5" Swivel

**OPTIONAL ACCESSORIES**

	Qty
POT RACK	
SIDE SPLASHS, RIGHT , LEFT or BOTH	

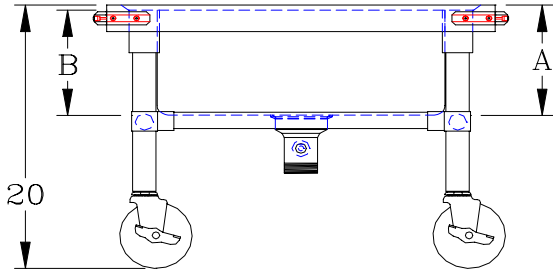
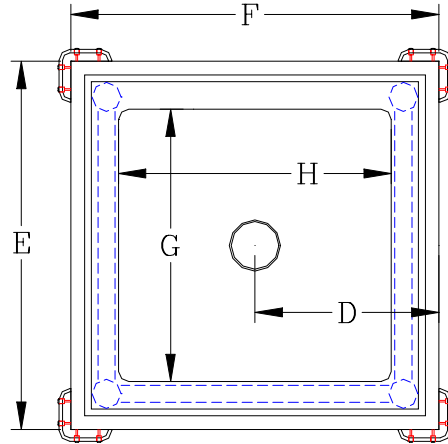
**John Boos & Co**

315 South First Street - Effingham, IL 62401  
Phone: 217-347-7701 - Fax: 217-347-7705  
Email: sales@johnboos.com - Web-site: www.johnboos.com

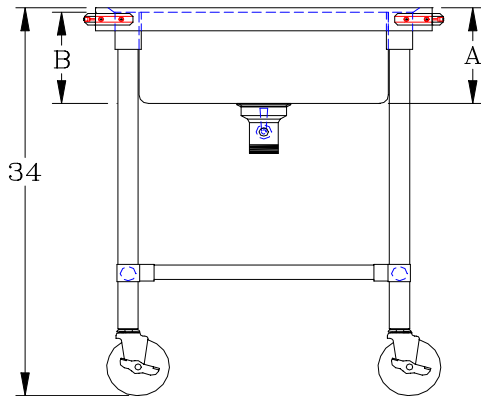
## DETAILED SPECIFICATIONS

	20"	34"
<b>A</b>	8-3/8"	8-3/8"
<b>B</b>	8"	8"
<b>C</b>	20"	34"

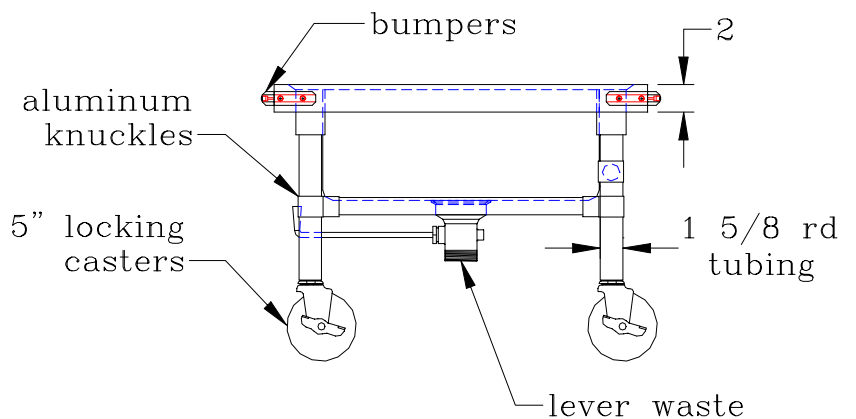
<b>BOWLS</b>	<b>D</b>	<b>E</b>	<b>F</b>	<b>G</b>	<b>H</b>
18 X 18	12-1/2"	25"	25"	18"	18"
20 X 20	13-1/2"	27"	27"	20"	20"
24 X 24	15-1/2"	31"	31"	24"	24"



STANDARD 16 GAUGE 20" HIGH			
MODEL	BOWL SIZE	DIMENSIONS	WT.
PB-SOSINK18-H20	18 X 18 X 8	25" X 25" X 20"	
PB-SOSINK20-H20	20 X 20 X 8	27" X 27" X 20"	
PB-SOSINK24-H20	24 X 24 X 8	31" X 31" X 20"	



STANDARD 16 GAUGE 34" HIGH			
MODEL	BOWL SIZE	DIMENSIONS	WT.
PB-SOSINK18-H34	18 X 18 X 8	25" X 25" X 20"	
PB-SOSINK20-H34	20 X 20 X 8	27" X 27" X 20"	
PB-SOSINK24-H34	24 X 24 X 8	31" X 31" X 20"	



All dimensions are typical.  
 Tolerance +/- .500".  
 All units ship unassembled for reduced shipping cost.

### John Boos & Co

315 South First - Effingham, IL 62401 Phone: 217-347-7701 - Fax: 217-347-7705  
 Email: sales@johnboos.com - Web-site: www.johnboos.com



May 2002

John Boos is constantly engaged in a program of improving products and therefore reserves the right to change specification without prior notice