



"S14" Stainless Steel Top Work Tables

w/ 14 Gauge Stainless Steel Work Top
w/ Stainless Steel Base and Undershef



AUTOQUOTES

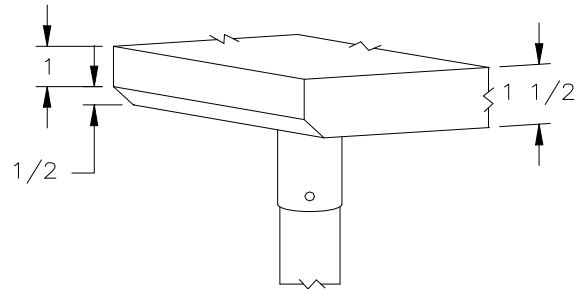


14 GAUGE TOP w/ UNDERSHELF					
24"WIDE	Qty	30"WIDE	Qty	36"WIDE	Qty
S14001		S14007		-	
S14002		S14008		S14013	
S14003		S14009		S14014	
S14004		S14010		S14015	
S14004A		S14010A		S14015A	
S14005		S14011		S14016	
S14005A		S14011A		S14016A	
S14006		S14012		S14017	

FEATURES:

- * 14 Gauge Stainless Steel Top
Type 300 stainless steel with # 4 polish, satin finish
- * Top is **Sound Deadened**
- * Reinforced with 1"x2" channel running entire length of table
- * 1 1/2" **Stallion Edge** on front and rear with side edges 90 degree bend down for table line-up
- * Stainless Steel Base and Undershef
Type 300 stainless steel with # 4 polish, satin finish
- * Undershef is secured in a fixed position, 12" above floor
- * Adjustable bullet feet
- * Shipped knocked-down, easy - to - assemble
- * Optional drawers, casters, pot racks, etc. available
- * All models are approved by the National Sanitation Foundation and the U.S. Department of Agriculture.

Note: "S14" standard w/stallion edge front and rear.
For 1 1/2" backsplash, use prefix "U" I.E. US14001, same price.



STALLION
SAFETY
EDGE

CONSTRUCTION:

Top: Stainless Steel Tops are TIG welded, Exposed welds are polished to match adjacent surface.

MATERIAL:

- Top: 14 gauge stainless Steel
Type 300 stainless steel with # 4 polish, satin finish
- Shelf: 18 gauge type 300 stainless steel # 4 polish, satin finish
** 36" Wide Tables, 16 Gauge Lower Shelf
4 polish, satin finish
- Legs: 1 5/8" Round O.D., 16 gauge type 300 tubular stainless steel
4 polish, satin finish
- Gussets: Stainless Steel
- Feet: 1" adjustable stainless steel bullet feet

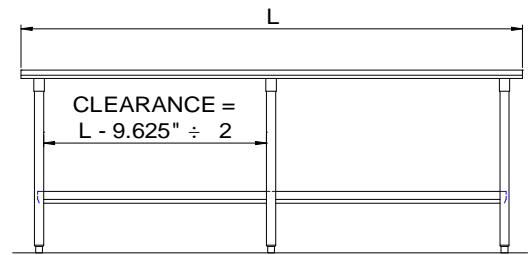
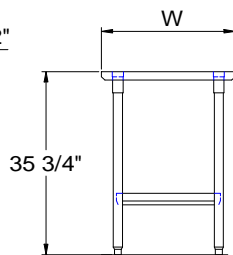
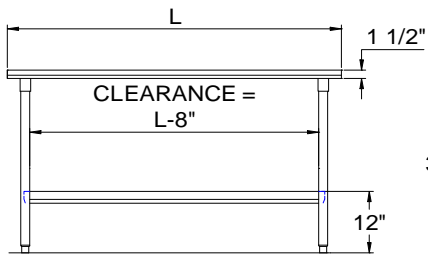
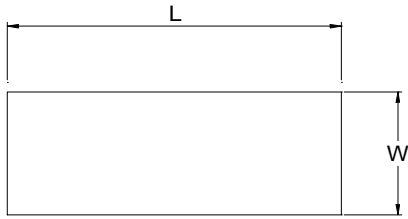
**OPTIONAL
ACCESSORIES**

	MODEL #	Qty
DRAWER		
DRAWER LOCK		
ADJUSTABLE SHELF		
CASTERS		
OVERSHELVES		
SINKS		
POT RACK		
WELDED SET-UP		

John Boos & Co

3601 S. Banker Street - Effingham, IL 62401
Phone: 217-347-7701 - Fax: 217-347-7705
Email: sales@johnboos.com - Web-site: www. johnboos.com

DETAILED SPECIFICATIONS



All units ship unassembled for reduced shipping cost.
 Units 7 ft. and larger are furnished with six legs.
 All dimensions are typical.
 Tolerance +/- .500".

Finished size of undershelf.
 Shelf length = length minus 4.875"
 Shelf width = width minus 4.25"

14 GAUGE TOP & UNDERSHELF

L	24" WIDE	WT.	30" WIDE	WT.	36" WIDE	WT.
36	S14001	56	S14007	69	-	-
48	S14002	70	S14008	80	S14013	91
60	S14003	83	S14009	96	S14014	109
72	S14004	96	S14010	112	S14015	128
84	S14004A	114	S14010A	135	S14015A	150
96	S14005	131	S14011	151	S14016	172
108	S14005A	144	S14011A	175	S14016A	191
120	S14006	157	S14012	183	S14017	209

John Boos & Co

3601 S. Bnaker Str. - Effingham, IL 62401 Phone: 217-347-7701 - Fax: 217-347-7705
 Email: sales@johnboos.com - Web-site: www.johnboos.com



July 2013

John Boos is constantly engaged in a program of improving products and therefore reserves the right to change specification without prior notice