



"S14G" Stainless Steel Top Work Tables

w/ 14 Gauge Stainless Steel Work Top
w/ Galvanized Base and Undershelf



AUTOQUOTES

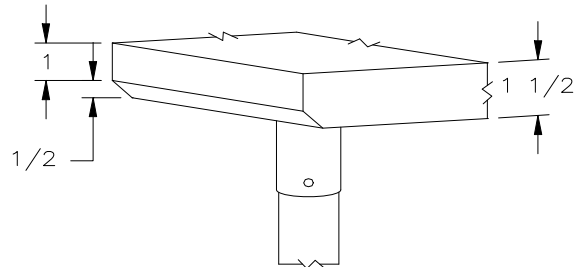


14 GAUGE TOP w/ UNDERSHELF					
24"WIDE	Qty	30"WIDE	Qty	36"WIDE	Qty
S14069		S14075		-	
S14069		S14076		S14081	
S14071		S14077		S14082	
S14072		S14078		S14083	
S14072A		S14078A		S14083A	
S14073		S14079		S14084	
S14073A		S14079A		S14084A	
S14074		S14080		S14085	

FEATURES:

- * 14 Gauge Stainless Steel Top
Type 300 stainless steel with # 4 polish, satin finish
- * Top is **Sound Deadened**
- * Reinforced with 1"x2" channel running entire length of table
- * 1 1/2" **Stallion Edge** on front and rear with side edges 90 degree bend down for table line-up
- * Galvanized Base and Undershelf
- * Undershelf is secured in a fixed position, 12" above floor
- * Adjustable bullet feet
- * Shipped knocked-down, easy - to - assemble
- * Optional drawers, casters, pot racks, etc. available
- * All models are approved by the National Sanitation Foundation and the U.S. Department of Agriculture.

Note: "S14G" standard w/stallion edge front and rear.
For 1 1/2" backsplash, use prefix "U" I.E. US14069, same price.



STALLION
SAFETY
EDGE

CONSTRUCTION:

Top: Stainless Steel Tops are TIG welded, Exposed welds are polished to match adjacent surfaces

MATERIAL:

Top: 14 gauge stainless Steel
Type 300 stainless steel with # 4 polish, satin finish
Shelf: 18 gauge Galvanized Steel
** 36" Wide Tables, 16 Gauge Lower Shelf
Legs: 1 5/8" Round O.D., 16 gauge tubular galvanized steel
Gussets: Galvanized Steel
Feet: 1" adjustable galvanized bullet feet

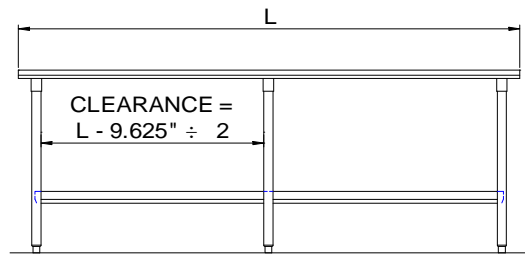
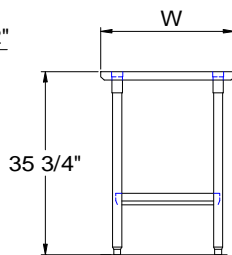
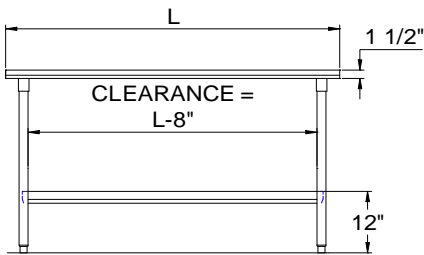
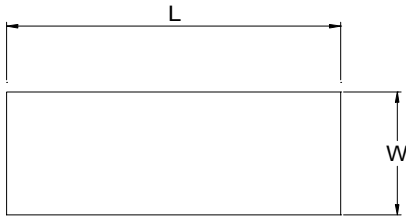
**OPTIONAL
ACCESSORIES**

	MODEL #	Qty
DRAWER		
DRAWER LOCK		
ADJUSTABLE SHELF		
CASTERS		
OVERSHELVES		
SINKS		
POT RACK		
WELDED SET-UP		

John Boos & Co

3601 S. Banker Street - Effingham, IL 62401
Phone: 217-347-7701 - Fax: 217-347-7705
Email: sales@johnboos.com - Web-site: www. johnboos.com

DETAILED SPECIFICATIONS



All units ship unassembled for reduced shipping cost.
 Units 7 ft. and larger are furnished with six legs.
 All dimensions are typical.
 Tolerance +/- .500".

Finished size of undershelf.
 Shelf length = length minus 4.875"
 Shelf width = width minus 4.25"

14 GAUGE TOP & UNDERSHELF

L	24" WIDE	WT.	30" WIDE	WT.	36" WIDE	WT.
36	S14069	57	S14075	65	-	-
48	S14070	71	S14076	82	S14081	92
60	S14071	84	S14077	98	S14082	111
72	S14072	103	S14078	121	S14083	138
84	S14072A	118	S14078A	138	S14083A	157
96	S14073	133	S14079	154	S14084	175
108	S14073A	147	S14079A	170	S14084A	194
120	S14074	160	S14080	186	S14085	213

John Boos & Co

3601 S. Banker Str. - Effingham, IL 62401 Phone: 217-347-7701 - Fax: 217-347-7705
 Email: sales@johnboos.com - Web-site: www.johnboos.com



July 2013

John Boos is constantly engaged in a program of improving products and therefore reserves the right to change specification without prior notice