



"S16" Stainless Steel Top Work Tables

w/ 16 Gauge Stainless Steel Work Top
w/ Stainless Steel Base and Undershef



AUTOQUOTES

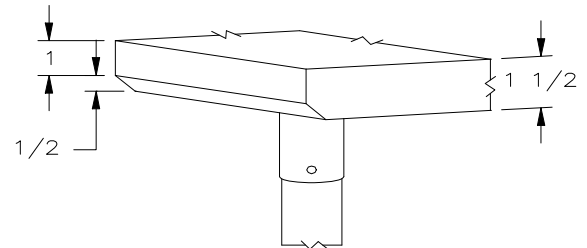


16 GAUGE TOP w/ UNDERSHELF					
24"WIDE	Qty	30"WIDE	Qty	36"WIDE	Qty
S16001		S16007		-	
S16002		S16008		S16013	
S16003		S16009		S16014	
S16004		S16010		S16015	
S16004A		S16010A		S16-15A	
S16005		S16011		S16016	
S16005A		S16011A		S16016A	
S16006		S16012		S16017	

FEATURES:

- * 16 Gauge Stainless Steel Top
Type 300 stainless steel with # 4 polish, satin finish
- * Top is **Sound Deadened**
- * Reinforced with 1"x2" channel running entire length of table
- * 1 1/2" **Stallion Edge** on front and rear with side edges 90 degree bend down for table line-up
- * Stainless Steel Base and Undershef
Type 300 stainless steel with # 4 polish, satin finish
- * Undershef is secured in a fixed position, 12" above floor
- * Adjustable bullet feet
- * Shipped knocked-down, easy - to - assemble
- * Optional drawers, casters, pot racks, etc. available
- * All models are approved by the National Sanitation Foundation and the U.S. Department of Agriculture.

Note: "S16" standard w/stallion edge front and rear.
For 1 1/2" backsplash, use prefix "U" I.E. UESS069, same price.



STALLION
SAFETY
EDGE

CONSTRUCTION:

Top: Stainless Steel Tops are TIG welded, Exposed welds are polished to match adjacent surface.

MATERIAL:

- Top: 16 gauge stainless Steel
Type 300 stainless steel with # 4 polish, satin finish
- Shelf: 18 gauge type 300 stainless steel # 4 polish, satin finish
** 36" Wide Tables, 16 Gauge Lower Shelf
4 polish, satin finish
- Legs: 1 5/8" Round O.D., 16 gauge type 300 tubular stainless steel
4 polish, satin finish
- Gussets: Stainless Steel
- Feet: 1" adjustable stainless steel bullet feet

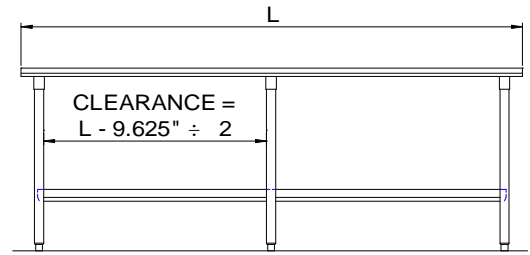
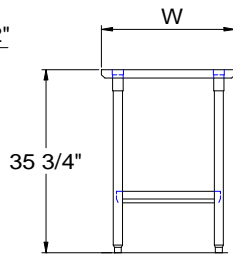
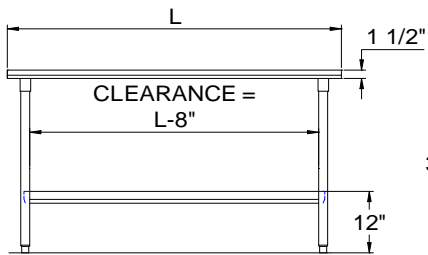
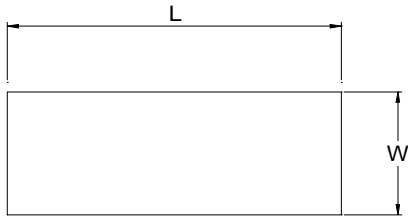
**OPTIONAL
ACCESSORIES**

	MODEL #	Qty
DRAWER		
DRAWER LOCK		
ADJUSTABLE SHELF		
CASTERS		
OVERSHELVES		
SINKS		
POT RACK		
WELDED SET-UP		

John Boos & Co

3601 S. Banker Street - Effingham, IL 62401
Phone: 217-347-7701 - Fax: 217-347-7705
Email: sales@johnboos.com - Web-site: www. johnboos.com

DETAILED SPECIFICATIONS



All units ship unassembled for reduced shipping cost.
 Units 7 ft. and larger are furnished with six legs.
 All dimensions are typical.
 Tolerance +/- .500".

Finished size of undershelf.
 Shelf length = length minus 4.875"
 Shelf width = width minus 4.25"

16 GAUGE TOP & UNDERSHELF

L	24" WIDE	WT.	30" WIDE	WT.	36" WIDE	WT.
36	S16001	52	S16007	59	-	-
48	S16002	64	S16008	73	S16013	82
60	S16003	76	S16009	83	S16014	98
72	S16004	97	S16010	101	S16015	144
84	S16004	103	S16010A	118	S16015A	138
96	S16005	118	S16011	137	S16016	155
108	S16005A	134	S16011A	154	S16016A	171
120	S16006	142	S16012	165	S16017	187

John Boos & Co

3601 S. Banker Str.- Effingham, IL 62401 Phone: 217-347-7701 - Fax: 217-347-7705
 Email: sales@johnboos.com - Web-site: www.johnboos.com



July 2013

John Boos is constantly engaged in a program of improving products and therefore reserves the right to change specification without prior notice