



# "FBLS" Stainless Steel Top Work Tables

BUDGET SERIES -----BUDGET SERIES -----BUDGET SERIES -----

w/ 18 Gauge Stainless Steel Work Top  
w/ Stainless Steel Base and Undershef



Item #	_____	Qty	_____
Model #	_____		
Project	_____		

**AUTOQUOTES**

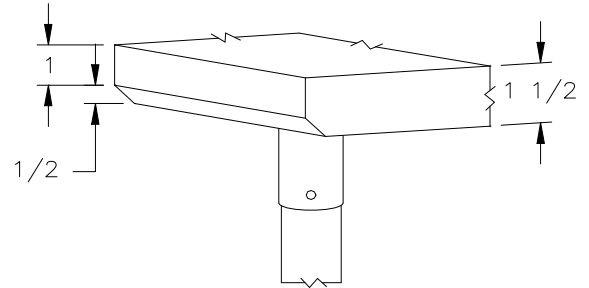


24"WIDE	Qty	30"WIDE	Qty
FBLS2424		--	
FBLS3024		FBLS3030	
FBLS3624		FBLS3630	
FBLS4824		FBLS4830	
FBLS6024		FBLS6030	
FBLS7224		FBLS7230	
FBLS9624		FBLS9630	

**FEATURES:**

- \* 18 Gauge Stainless Steel Top
- Type 430 stainless steel mechanically polished, satin finish
- \* Top is Sound Deadened
- \* 1 1/2" Stallion Edge on front and rear with side edges 90 degree bend down for table line-up
- \* Stainless Steel Base and Undershef
- \* Undershef is adjustable to desired height
- \* Adjustable bullet feet
- \* Shipped knocked-down, easy - to - assemble
- \* All models are approved by the National Sanitation Foundation and the U.S. Department of Agriculture.

Note: FBLS" standard w/stallion edge front and rear. For 1 1/2" backsplash, use prefix "U" I.E. UFBLSO69, same price.



**CONSTRUCTION:**

Top: Stainless Steel Tops are TIG welded, Exposed welds are polished to match adjacent surface.

**MATERIAL:**

- Top: 18 gauge stainless steel
- Type 430 stainless steel mechanically polished, satin finish
- Shelf: 18 gauge Stainless Steel
- Legs: 1 5/8" Round O.D., 16 gauge tubular stainless steel
- Gussets: Stainkless Steel
- Feet: 1" adjustable plastic bullet feet

STALLION  
SAFETY  
EDGE

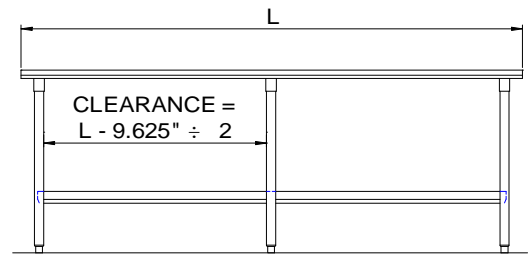
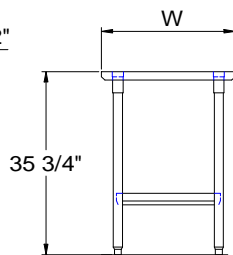
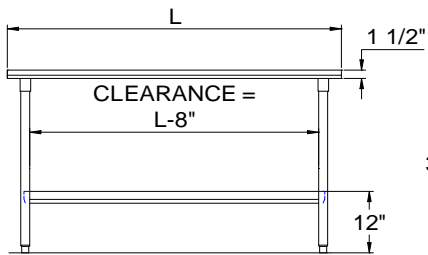
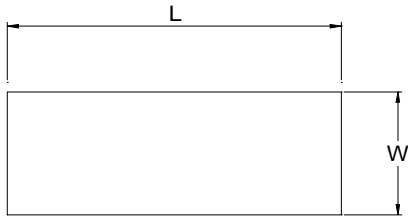
**ACCESSORIES**

	MODEL #	Qty
REAR 1-1/2" BACKSPLASH		

**John Boos & Co**

3601 S. Bankert Street - Effingham, IL 62401  
Phone: 217-347-7701 - Fax: 217-347-7705  
Email: sales@johnboos.com - Web-site: www. johnboos.com

## DETAILED SPECIFICATIONS



All units ship unassembled for reduced shipping cost.  
 Units 7 ft. and larger are furnished with six legs.  
 All dimensions are typical.  
 Tolerance +/- .500".

Finished size of undershelf.  
 Shelf length = length minus 4.875"  
 Shelf width = width minus 4.25"

### 18 GAUGE TOP w/ STAINLESS STEEL LEGS & UNDERSHELF

L	24" WIDE	WT.	30" WIDE	WT.
24	FBLS2424	40	--	
30	FBLS3024	45	FBLS3030	50
36	FBLS3624	50	FBLS3630	56
48	FBLS4824	61	FBLS4830	69
60	FBLS6024	71	FBLS6030	82
72	FBLS7224	83	FBLS7230	94
96	FBLS9624	111	FBLS9630	128

### John Boos & Co

3601 S. Banker Str - Effingham, IL 62401 Phone: 217-347-7701 - Fax: 217-347-7705  
 Email: sales@johnboos.com - Web-site: www.johnboos.com



July n2013

**John Boos** is constantly engaged in a program of improving products and therefore reserves the right to change specification without prior notice