

Ice Cream Freezer

KCG200G W

19.8 Cu. Ft. Commercial,
Food Service Grade



Signature Features

19.8 Cubic Feet Capacity

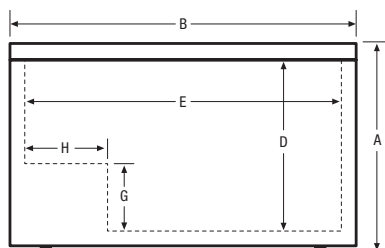
Cold Control Capable of +10 Degrees Fahrenheit For Hand Dipping Ice Cream

Defrost Drain

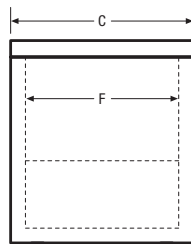
Heavy-Duty Casters

Heavy-Duty Cooling System, NSF®-Certified Performance

NSF®-Certified For Food Service Applications



Front



Side

Product Dimensions

Exterior -	
A - Height (Including Casters)	37-1/2"
B - Width	62"
C - Depth	27-3/4"
Interior -	
D - Height	29-1/8"
E - Width	56"
F - Depth	22-1/2"
G - Height	10-3/8"
H - Width	9-3/8"

More Easy-To-Use Features

NSF®-Certified Thermometer

Sealed Cabinet Interior For Easy Cleaning

Sliding Glass Lid With Lock

Heavy-Duty, NSF®-Certified Wire Storage Baskets

Accessories

NSF®-Certified Wire Freezer Basket ¹	297117900
Basket Dividers	297118000
NSF®-Certified Thermometer	297070100

Specifications

Total Capacity (Cu. Ft.)	19.8
Power Supply Connection Location	Left Bottom Rear
Voltage Rating	120V / 5A
Shipping Weight (Approx.)	222 Lbs.

ENERGY STAR®
NSF® International Certification



Available in:



White (W)



Plug Type (NEMA) 5-15P

¹One Included, Holds Up To Five Baskets. Accessories information available on the web at kelvinator.com