



# Chest Freezer

KCS050L W

5.0 Cu. Ft. Commercial,  
Food Service Grade



### Product Dimensions

Exterior -	
A - Height (Including Casters)	36-11/16"
B - Width	27"
C - Depth (Including Hinges)	23-1/4"
Interior -	
D - Height	28-13/16"
E - Width	22"
F - Depth	16-1/2"
G - Height	10"
H - Width	11-1/4"

### More Easy-To-Use Features

Heavy-Duty, NSF®-Certified Wire Storage Basket

NSF®-Certified Thermometer

Sealed Cabinet Interior For Easy Cleaning

### Accessories

NSF®-Certified Wire Freezer Basket <sup>1</sup>	297118500
NSF®-Certified Thermometer	297074200

### Specifications

Total Capacity (Cu. Ft.)	5.0
Power Supply Connection Location	Left Bottom Rear
Voltage Rating	120V / 5A
Shipping Weight (Approx.)	128 Lbs.

ENERGY STAR®

NSF® International Certification



Available in:



White (W)



Plug Type (NEMA) 5-15P

<sup>1</sup>One Included, Holds Up To Two Baskets. Accessories information available on the web at [kelvinator.com](http://kelvinator.com)

## Signature Features

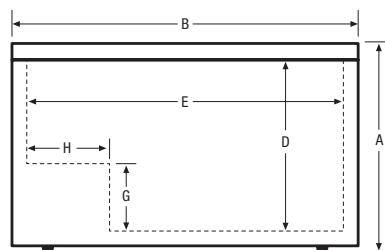
5.0 Cubic Feet Capacity

Defrost Drain

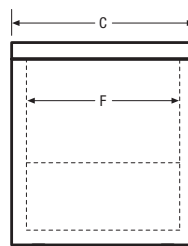
Heavy-Duty Casters

Heavy-Duty Cooling System, NSF®-Certified Performance

NSF®-Certified For Food Service Applications



Front



Side



USA • 10200 David Taylor Drive • Charlotte, NC 28262 • 1-866-738-1640 • [kelvinator.com](http://kelvinator.com)  
CANADA • 5855 Terry Fox Way • Mississauga, ON L5V 3E4

KCS050L 05/11

© 2011 Electrolux Home Products, Inc.



High standards of quality at Electrolux Home Products, Inc. mean we are constantly working to improve our products. We reserve the right to change specifications or discontinue models without notice.

Printed in the U.S.A.