



ITEM NO. _____
 PROJECT _____
 LOCATION _____
 DATE _____ QTY. _____



KSBB SERIES

Back Bar Refrigerators

SOLID DOOR MODELS

- KSBB59
- KSBB69
- KSBB79
- KSBB95

GLASS DOOR MODELS

- KSBB59-G
- KSBB69-G
- KSBB79-G
- KSBB95-G



ETL Sanitation listed for the storage and display of non-potentially hazardous bottled or canned products only.

FEATURES

CONSTRUCTION

- Stainless steel top
- Black vinyl coated steel finish on front, door, sides and back
- Galvanized steel interior with stainless steel floors
- Foamed-in-place with low ODP polyurethane insulation
- Wall thickness: 1 1/2"
- Two adjustable epoxy-coated shelves per section
- Interior fluorescent light
- Standard analog thermostat
- Internal height capacity allows stacking of three "tall boy" beers

DOORS

- Field interchangeable doors from solid to glass or glass to solid

- Glass door models have black frames
- Standard door locks on each door
- Magnetic door gaskets, removable without tools
- Door openings have plastic breaker strips to reduce condensation

REFRIGERATION

- Self-contained refrigeration system metered by capillary tube
- Front breathing compressor on left side
- Evaporator coils are mounted to left side and are epoxy-coated to resist corrosion
- Evaporator coils feature large fan motor and blades for greater air flow
- Condensate evaporator
- Access to slide-out condensing unit behind front grille for easy cleaning and service

- Refrigerant: R-134a
- Temperature range: 33° to 38°F (.5° to 3°C)

WARRANTY

- Standard limited four year extended compressor and one year limited parts and labor

OPTIONS

- Epoxy coated flat shelves w/clips
- 3" casters

BID SPECIFICATIONS

Item no. KSBB _____. Provide _____ Back Bar Refrigerator, Kool Star model no. KSBB _____.

Back bar refrigerator will feature stainless steel top and black vinyl on steel finish on front, door, sides and back. Interior will be galvanized steel with stainless steel floors. Door openings will have plastic breaker strips to reduce condensation. Adjustable

epoxy-coated shelves and an interior fluorescent light will also be standard. Doors will be field interchangeable from solid to glass or glass to solid.

The refrigeration system will be self-contained and use R-134a refrigerant. The temperature range will be 33° to 38°F (.5° to 3°C). System will be equipped with coated evaporator coils and a condensate

evaporator. Condensing unit will be slide-out type for easy cleaning and service.

Refrigerator to have standard limited 4 year extended compressor warranty and one year limited parts and labor warranty.

Refrigerator to be ETL listed in the U.S. and Canada and ETL Sanitation listed for the storage and display of non-potentially hazardous bottled or canned products only.





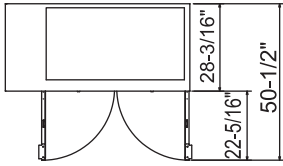
Kool Star[®]

**KSBB SERIES
BACK BAR REFRIGERATORS**

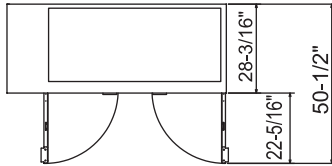
TECHNICAL SPECIFICATIONS

| MODEL | DIMENSIONS (in.) | | | DIMENSIONS (mm) | | | VOLTS | AMPS | UNIT H.P. | NO. OF DOORS | NO. OF SHELVES | CAPACITY BARRELS* | CAPACITY 12 OZ. CANS/ 12 OZ. BOTTLES | SHIP CU. FT. | SHIP WT. (LB/KG) |
|--------|--------------------------------|---------------------------------|--------------------------------|-----------------|-----|-----|-------|------|-----------|--------------|----------------|-------------------|--------------------------------------|--------------|------------------|
| | L | D | H | L | D | H | | | | | | | | | |
| KSBB59 | 59 ¹ / ₂ | 28 ³ / ₁₆ | 37 ¹ / ₄ | 1283 | 716 | 946 | 115 | 6.6 | 1/3 | 2 | 4 | 3 | 640/432 | 51.0 | 312/142 |
| KSBB69 | 69 ¹ / ₂ | 28 ³ / ₁₆ | 37 ¹ / ₄ | 1765 | 716 | 946 | 115 | 6.6 | 1/3 | 2 | 4 | 3 | 800/540 | 59.0 | 360/164 |
| KSBB79 | 80 | 28 ³ / ₁₆ | 37 ¹ / ₄ | 2032 | 716 | 946 | 115 | 6.6 | 1/3 | 3 | 6 | 4 | 920/621 | 68.0 | 378/172 |
| KSBB95 | 95 ¹ / ₂ | 28 ³ / ₁₆ | 37 ¹ / ₄ | 2426 | 716 | 946 | 115 | 7.2 | 1/3 | 3 | 6 | 5 | 1160/810 | 81.0 | 440/200 |

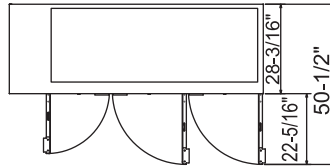
*Barrel capacity: 16 gallon.



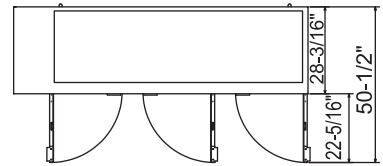
**KSBB59
PLAN VIEW**



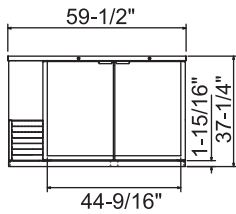
**KSBB69
PLAN VIEW**



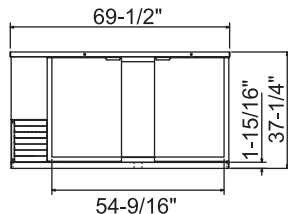
**KSBB79
PLAN VIEW**



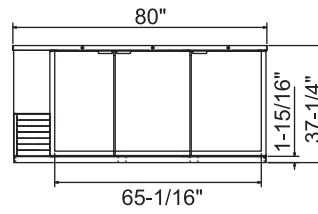
**KSBB95
PLAN VIEW**



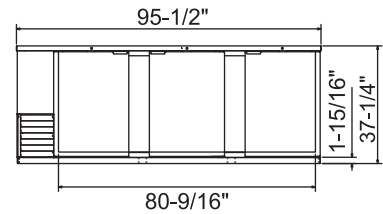
**KSBB59
ELEVATION VIEW**



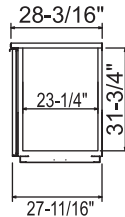
**KSBB69
ELEVATION VIEW**



**KSBB79
ELEVATION VIEW**



**KSBB95
ELEVATION VIEW**



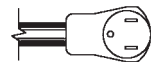
**ALL MODELS
SIDE VIEW**

LISTINGS



HOOKUP

All models via plug in, 8 foot long flexible three wire 16 gauge cord with molded plug.



NEMA 5-15P

NOTE: Cabinet designed for optimum performance in air-conditioned area at 75°F ambient and 55% relative humidity. All specifications subject to change without notice.