

ITEM NO. \_\_\_\_\_  
 PROJECT \_\_\_\_\_  
 LOCATION \_\_\_\_\_  
 DATE \_\_\_\_\_ QTY. \_\_\_\_\_



# KSGF SERIES

## Glass Frosters/Plate Chillers

### REFRIGERATORS

- KSGF36
- KSGF50

### FEATURES

#### CONSTRUCTION

- Stainless steel top
- Black painted steel finish on front, sides and back
- Galvanized steel interior with floor drain
- Easy-glide sliding lids constructed of stainless steel
- Integrated glass rail on rear top
- Door openings have plastic breaker strips to reduce condensation
- Foamed-in-place with low ODP polyurethane insulation
- Wall thickness: 1 1/2"

#### REFRIGERATION

- Self-contained forced air refrigeration system metered by capillary tube
- Evaporator coils epoxy-coated to resist corrosion
- Evaporator coils feature multiple fan motors and blades for greater air flow
- Automatic defrost and condensate evaporator requires no plumbing
- Access to slide-out condensing unit behind front grille for easy cleaning and service

- Refrigerant: R-134a on KSGF36 and R-404a on KSGF50
- Operating temperature: 0°F (-17°C)

#### WARRANTY

- **Standard limited three year parts and labor**
- **Additional two year coverage on compressor part**

#### OPTIONS

- Casters

### BID SPECIFICATIONS

Item no. KSGF \_\_\_\_\_. Provide \_\_\_\_\_ Glass Froster/Plate Chiller(s), Kool Star model no. KSGF \_\_\_\_\_.

Glass froster will feature stainless steel top with integrated glass rail, and black painted steel front, sides and back. Interior will be galvanized steel with floor drain. Sliding lids will be constructed of stainless steel. Door

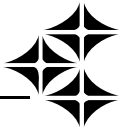
openings will have plastic breaker strips to reduce condensation.

The refrigeration system will be self-contained. KSGF36 will use R-134a refrigerant while KSGF50 will use R-404a. The operating temperature will be 0°F (-17°C). System will be equipped with coated evaporator coils and a condensate evaporator. Con-

densing unit will be slide-out type for easy cleaning and service.

Glass froster to have standard limited 3-year parts and labor warranty with additional 2-year on compressor part.

Glass froster to be UL, C-UL and ETL Sanitation listed.



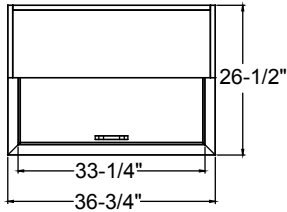
# Kool Star®

## KSGF SERIES GLASS FROSTERS/PLATE CHILLERS

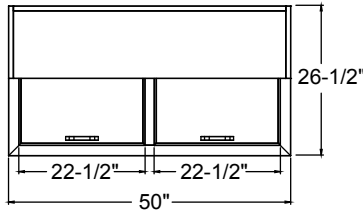
### TECHNICAL SPECIFICATIONS

MODEL	DIMENSIONS (in.)			DIMENSIONS (mm)			VOLTS	AMPS	UNIT H.P.	NO. OF LIDS	NO. OF SHELVES	SHIP CU. FT.	SHIP WT. (LB/KG)
	L	D	H	L	D	H							
KSGF36	36 <sup>3</sup> / <sub>4</sub>	26 <sup>1</sup> / <sub>2</sub>	33 <sup>1</sup> / <sub>2</sub>	933	673	851	115	5.3	3/8	1	4	27.2	189/85
KSGF50	50	26 <sup>1</sup> / <sub>2</sub>	33 <sup>1</sup> / <sub>2</sub>	1270	673	851	115	7.9	1/2	2	4	33.5	233/105

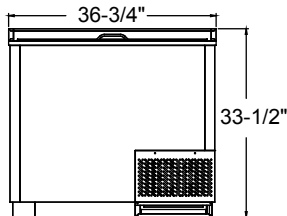
MODEL	CAPACITY 12 OZ. BEER MUG	CAPACITY 10 OZ. BEER STEIN	CAPACITY 12 OZ. BEER TANKARD	CAPACITY 8" GLASS	CAPACITY 12 OZ. SPORT MUG
KSGF36	159	150	145	132	187
KSGF50	237	226	219	206	286



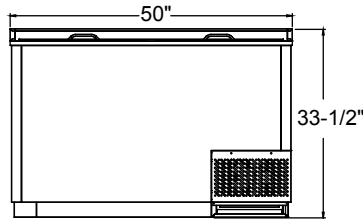
**KSGF36  
PLAN VIEW**



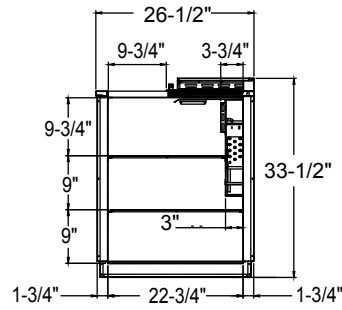
**KSGF50  
PLAN VIEW**



**KSGF36  
ELEVATION VIEW**



**KSGF50  
ELEVATION VIEW**



**BOTH MODELS  
SIDE VIEW**

### LISTINGS



### HOOKUP

All models via plug in, 8 foot long flexible three wire 16 gauge cord with molded plug.



**NOTE:** Cabinet designed for optimum performance in air-conditioned area at 75°F ambient and 55% relative humidity. All specifications subject to change without notice.