

# STANDARD SERIES UNDERBAR ADD-ON BLENDER STATIONS

MODEL: \_\_\_\_\_ PROJECT: \_\_\_\_\_ ITEM #: \_\_\_\_\_ QTY: \_\_\_\_\_

## PRODUCT IMAGES



18-12BD SHOWN

18-12FT SHOWN

**AVAILABLE IN 1800 or 2100 SERIES**

## STANDARD FEATURES

- **Sink Bowls**  
20 gauge stainless steel. 12" Model has 10" x 12" x 7" and 18" Model has 10" x 14" x 7" deep bowl with a 1 1/2" drain located in center
- **Backsplash**  
22 gauge stainless steel
- **Sides**  
18 gauge stainless steel
- **Back and Bottom**  
20 gauge galvanized steel
- **Legs**  
1 5/8" tubular 16 gauge galvanized steel with grey plastic bullet foot
- **Shelf**  
22 gauge stainless steel
- **Electrical**  
Duplex outlet located underneath
- **Plumbing**  
1/2" IPS hot and cold water. 1 1/2" IPS drain connection
- **Faucet**  
1800 Series: 4" center wall mount faucet  
2100 Series: 4" center deck mount faucet
- **Low Lead Compliance**  
Low Lead Compliant faucet options are available to meet California AB-1953 and Vermont S152 standards

## OPTIONAL ACCESSORIES

- **C-24** Towel Ring
- **C-30** Left and Right End Side Splashes
- **C-33** Perforated Dump Basket
- **C-36** Upgrade: Stainless Steel Legs
- **C-39** Right End Side Splash
- **C-40** Left End Side Splash
- **H-109** Upgrade: Royal Series Low Lead Faucet
- **H-200** Upgrade: Commercial Series Low Lead Faucet



**CERTIFICATIONS:**

**APPROVED BY:**

Due to our commitment to continued product improvement, specifications are subject to change without notice.

Printed in the USA

**Krowne Metal Corporation**

100 Haul Rd. Wayne, NJ 07470 • Toll Free: (800) 631-0442 • Fax: (973) 872-1129  
sales@krowne.com • www.krowne.com • www.facebook.com/KrowneMetal • www.twitter.com/KrowneMetal

Rev. 03/2012  
No. 4.11



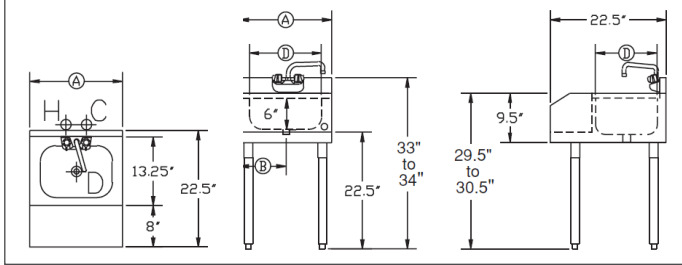
# STANDARD SERIES UNDERBAR ADD-ON BLENDER STATIONS

MODEL: \_\_\_\_\_ PROJECT: \_\_\_\_\_ ITEM #: \_\_\_\_\_ QTY: \_\_\_\_\_

## 1800 SERIES: BLENDER STATION

Model Numbers	Length Ⓐ	Left Side to Drain Ⓑ	Bowl Size Ⓓ	Leg Location Location	Weight (lbs.)
18-12BDR	1'-0"	6"	10" x 12"	Right	30
18-12BDL	1'-0"	6"	10" x 12"	Left	30
18-12BD	1'-0"	6"	10" x 12"	Four	30
18-18BDR	1'-6"	9"	10" x 14"	Right	39
18-18BDL	1'-6"	9"	10" x 14"	Left	39
18-18BD	1'-6"	9"	10" x 14"	Four	39

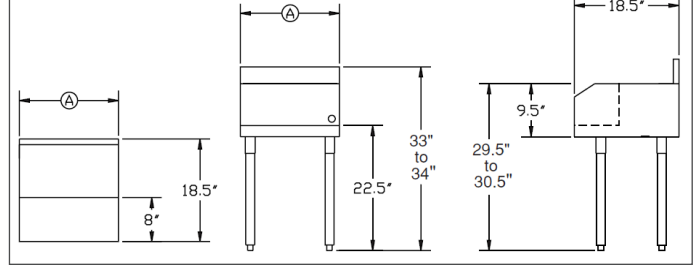
**MECHANICAL REQUIREMENTS:** 1/2" IPS hot and cold water. 1 1/2" IPS drain connection



## 1800 SERIES: FLAT TOP

Model Numbers	Length Ⓐ	Leg Location Location	Weight (lbs.)
18-12FTR	1'-0"	Right	30
18-12FTL	1'-0"	Left	30
18-12FT	1'-0"	Four	30
18-18FTR	1'-6"	Right	39
18-18FTL	1'-6"	Left	39
18-18FT	1'-6"	Four	39

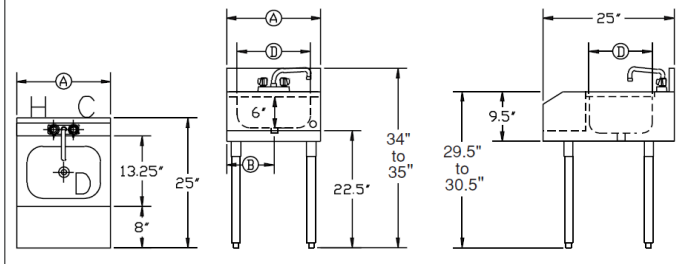
**MECHANICAL REQUIREMENTS:** 1/2" IPS hot and cold water. 1 1/2" IPS drain connection



## 2100 SERIES: BLENDER STATION

Model Numbers	Length Ⓐ	Left Side to Drain Ⓑ	Bowl Size Ⓓ	Leg Location Location	Weight (lbs.)
21-12BDR	1'-0"	6"	10" x 12"	Right	30
21-12BDL	1'-0"	6"	10" x 12"	Left	30
21-12BD	1'-0"	6"	10" x 12"	Four	30
21-18BDR	1'-6"	9"	10" x 14"	Right	39
21-18BDL	1'-6"	9"	10" x 14"	Left	39
21-18BD	1'-6"	9"	10" x 14"	Four	39

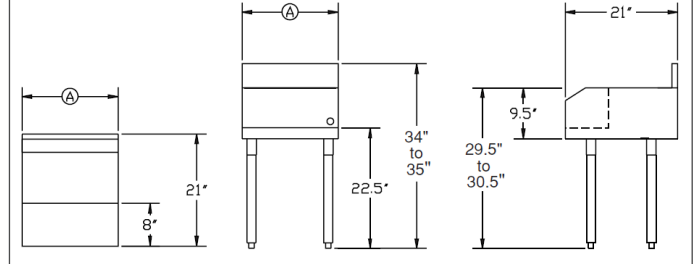
**MECHANICAL REQUIREMENTS:** 1/2" IPS hot and cold water. 1 1/2" IPS drain connection



## 2100 SERIES: FLAT TOP

Model Numbers	Length Ⓐ	Leg Location Location	Weight (lbs.)
21-12FTR	1'-0"	Right	30
21-12FTL	1'-0"	Left	30
21-12FT	1'-0"	Four	30
21-18FTR	1'-6"	Right	39
21-18FTL	1'-6"	Left	39
21-18FT	1'-6"	Four	39

**MECHANICAL REQUIREMENTS:** 1/2" IPS hot and cold water. 1 1/2" IPS drain connection



**APPROVED BY:**

**CERTIFICATIONS:**

Due to our commitment to continued product improvement, specifications are subject to change without notice.

Printed in the USA

**Krowne Metal Corporation**

100 Haul Rd. Wayne, NJ 07470 • Toll Free: (800) 631-0442 • Fax: (973) 872-1129

sales@krowne.com • www.krowne.com • www.facebook.com/KrowneMetal • www.twitter.com/KrowneMetal

Rev. 03/2012  
No. 4.11