

MODEL: \_\_\_\_\_ PROJECT: \_\_\_\_\_ ITEM #: \_\_\_\_\_ QTY: \_\_\_\_\_

## PRODUCT IMAGE



18-53C SHOWN

**AVAILABLE IN 1800 or 2100 SERIES**

## STANDARD FEATURES

- **Sink Bowl**  
20 gauge stainless steel. 10" x 14" x 10" deep bowl. 1 1/2" radius on all vertical and horizontal corners. Furnished with 1" stainless steel drain and 7 1/2" standpipe. Drain located in left rear corner
- **Drainboard**  
20 gauge embossed stainless steel reinforced with welded braces every 6 inches. 3/4" radius on all vertical and horizontal edges
- **Front Apron**  
22 gauge stainless steel clad over 20 gauge galvanized steel
- **Backsplash**  
22 gauge stainless steel
- **Sides**  
20 gauge stainless steel
- **Back and Bottom**  
20 gauge galvanized steel
- **Legs**  
1 5/8" tubular 16 gauge galvanized steel with grey plastic bullet foot
- **Faucet**  
1800 Series: 4" center wall mount faucet  
2100 Series: 4" center deck mount faucet
- **Low Lead Compliance**  
Low Lead Compliant faucet options are available to meet California AB-1953 and Vermont S152 standards

## OPTIONAL ACCESSORIES

- **C-24** Towel Ring
- **C-33** Perforated Basket
- **C-36** Upgrade: Stainless Steel Legs
- **C-39** Right End Side Splash
- **C-40** Left End Side Splash
- **C-63** Insulated Sink Bowl (One Bowl)
- **C-64** Insulated Sink Bowls (Three Bowls)
- **C-66** 6" Longer Legs (36" Working Height)
- **H-109** Upgrade: Royal Series Low Lead Faucet
- **H-200** Upgrade: Commercial Series Low Lead Faucet
- **S-"XX"** Single Speedrail ("XX" denotes 24, 30", or 36" or 48")
- **D-"XX"** Double Speedrail ("XX" denotes 24, 30", or 36")



**APPROVED BY:**

**CERTIFICATIONS:**

Due to our commitment to continued product improvement, specifications are subject to change without notice.

Printed in the USA

**Krowne Metal Corporation**

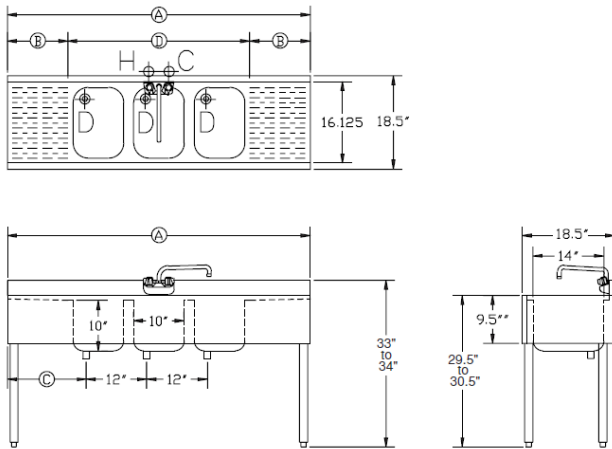
100 Haul Rd. Wayne, NJ 07470 • Toll Free: (800) 631-0442 • Fax: (973) 872-1129  
sales@krowne.com • www.krowne.com • www.facebook.com/KrowneMetal • www.twitter.com/KrowneMetal

Rev. 03/2012  
No. 4.4

# STANDARD SERIES UNDERBAR BAR SINKS

MODEL: \_\_\_\_\_ PROJECT: \_\_\_\_\_ ITEM #: \_\_\_\_\_ QTY: \_\_\_\_\_

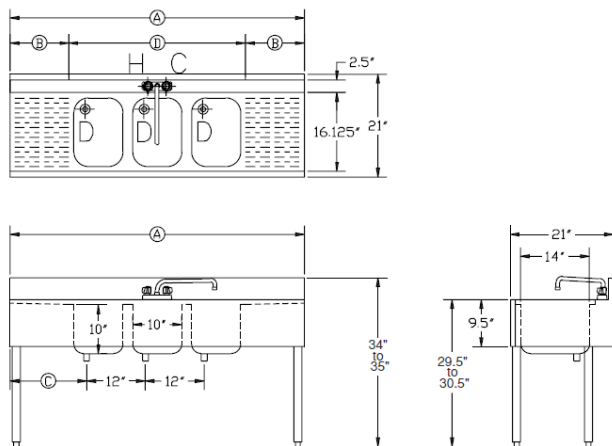
## 1800 SERIES



Model Numbers	Length A	Drainboard Side B	Left Side to Drain C	Bowls D	Weight (lbs.)
18-21L	2'-0"	12" Right	4"	1	35
18-31C	3'-0"	12" Each	16"	1	48
18-32L	3'-0"	12" Right	4"	2	53
18-32R	3'-0"	12" Left	15"	2	53
18-42L	4'-0"	24" Right	4"	2	55
18-42R	4'-0"	24" Left	27"	2	55
18-42C	4'-0"	12" Each	15"	2	55
18-33	3'-0"	N/A	4"	3	55
18-43L	4'-0"	12" Right	4"	3	60
18-43R	4'-0"	12" Left	15"	3	60
18-53C	5'-0"	12" Each	15"	3	69
18-63C	6'-0"	18" Each	21"	3	75
18-73C	7'-0"	24" Each	27"	3	86
18-83C	8'-0"	30" Each	33"	3	94
18-64C	6'-0"	12" Each	15"	4	79
18-74C	7'-0"	18" Each	21"	4	91
18-84C	8'-0"	24" Each	27"	4	99

**MECHANICAL REQUIREMENTS:** 1/2" IPS hot and cold water. 1" IPS drain connection

## 2100 SERIES



Model Numbers	Length A	Drainboard Side B	Left Side to Drain C	Bowls D	Weight (lbs.)
21-31C	3'-0"	12" Each	16"	1	51
21-32L	3'-0"	12" Right	4"	2	56
21-32R	3'-0"	12" Left	15"	2	56
21-42L	4'-0"	24" Right	4"	2	58
21-42R	4'-0"	24" Left	27"	2	58
21-42C	4'-0"	12" Each	15"	2	58
21-33	3'-0"	N/A	4"	3	53
21-43L	4'-0"	12" Right	4"	3	63
21-43R	4'-0"	12" Left	15"	3	63
21-53C	5'-0"	12" Each	15"	3	75
21-63C	6'-0"	18" Each	21"	3	85
21-73C	7'-0"	24" Each	27"	3	95
21-83C	8'-0"	30" Each	33"	3	104
21-64C	6'-0"	12" Each	15"	4	88
21-74C	7'-0"	18" Each	21"	4	100
21-84C	8'-0"	24" Each	27"	4	109

**MECHANICAL REQUIREMENTS:** 1/2" IPS hot and cold water. 1" IPS drain connection



**APPROVED BY:**

**CERTIFICATIONS:**

Due to our commitment to continued product improvement, specifications are subject to change without notice.