



STANDARD SERIES UNDERBAR CONVENIENCE STORE SINKS

MODEL: _____ PROJECT: _____ ITEM #: _____ QTY: _____

PRODUCT IMAGE



CS-1860 SHOWN

AVAILABLE IN 36", 60" & 72" SIZES

STANDARD FEATURES

- **Sink Bowls**
20 gauge stainless steel. 10" x 14" x 10" deep. Furnished with 3 1/2" basket drains
- **Drainboard**
20 gauge stainless steel reinforced with welded braces every six inches
- **Front Apron**
20 gauge stainless steel clad over 20 gauge galvanized steel
- **Sides**
20 gauge stainless steel
- **Backsplash**
20 gauge stainless steel
- **Back and Bottom**
20 gauge galvanized steel
- **Legs**
1 5/8" tubular 16 gauge stainless steel with grey plastic bullet feet
- **Faucet (included)**
4" on center wall mount faucet
- **Plumbing**
1/2" IPS hot and cold water. 1 1/2" IPS drain connection
- **Low Lead Compliance**
Low Lead Compliant faucet options are available to meet California AB-1953 and Vermont S152 standards

OPTIONAL ACCESSORIES

- **H-109** Upgrade: Low Lead Royal Series Faucet
- **H-200** Upgrade: Low Lead Commercial Series Faucet



APPROVED BY:

CERTIFICATIONS:

Due to our commitment to continued product improvement, specifications are subject to change without notice.

Printed in the USA

Krowne Metal Corporation

100 Haul Rd. Wayne, NJ 07470 • Toll Free: (800) 631-0442 • Fax: (973) 872-1129
sales@krowne.com • www.krowne.com • www.facebook.com/KrowneMetal • www.twitter.com/KrowneMetal

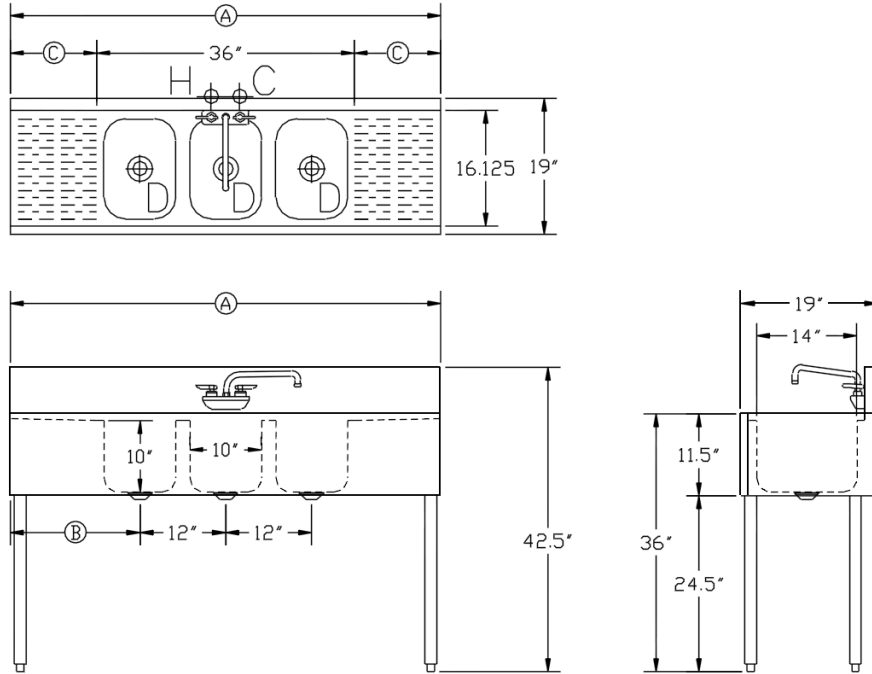
Rev. 12/2011
No. 3.1



STANDARD SERIES UNDERBAR CONVENIENCE STORE SINKS

MODEL: _____ PROJECT: _____ ITEM #: _____ QTY: _____

CONVENIENCE STORE SINKS



Model Numbers	Overall Length Ⓐ	Bowls	Left Side to Drain	Drainboard Size	Bowl(s) Location	Weight (lbs.)
CS-1836	3'-0"	3	6"	N/A	Center	69
CS-1860	5'-0"	3	18"	12" (2 ea.)	Center	118
CS-1872	6'-0"	3	24"	18" (2 ea.)	Center	138

MECHANICAL REQUIREMENTS: 1/2" IPS hot and cold connection. 1 1/2" IPS drain connection



APPROVED BY:

CERTIFICATIONS:

Due to our commitment to continued product improvement, specifications are subject to change without notice.