



# GLASS WASHING

## ROTARY STYLE GLASS WASHER

MODEL: \_\_\_\_\_ PROJECT: \_\_\_\_\_ ITEM #: \_\_\_\_\_ QTY: \_\_\_\_\_

### PRODUCT IMAGE



GWR-24 SHOWN

**AVAILABLE ONLY IN 25" SIZE**

### OPTIONAL ACCESSORIES

- **28-111S** 3 1/2" x 3 1/2" Plate Caster with 5" Locking Wheel

### STANDARD FEATURES

- Low Temperature
- Stainless Steel construction
- **Free 1 Year Warranty** if Glass Washing Dump Sink is purchased and placed next to Glasswasher in Bar Line-Up -5°F to 10°F temperature range
- 26" Front to Back depth, 39" Height
- 12" glass clearance accepts taller stemware
- Internal upper drain screen for improved filtration and ease of cleaning
- Self flushing wash chamber reduces maintenance
- Reduced water usage
- 208-230 V connection
- Three-pump injection system for precise chemical dispensing
- Upper and lower wash and rinse arms produce sparkling clean glasses every time
- Double walled construction for quieter operation
- Cool final rinse water provides a cool glass ready for immediate use
- Cabinet below holds the 3 chemicals required each in 1 gallon containers
- Polypropylene conveyor virtually eliminates chipping of fine stemware
- 90 second cycle time
- 1200 glasses per hour (2-1/2" glasses)



**CERTIFICATIONS:**

**APPROVED BY:**

Due to our commitment to continued product improvement, specifications are subject to change without notice.

Printed in the USA

**Krowne Metal Corporation**

100 Haul Rd. Wayne, NJ 07470 • Toll Free: (800) 631-0442 • Fax: (973) 872-1129  
sales@krowne.com • www.krowne.com • www.facebook.com/KrowneMetal • www.twitter.com/KrowneMetal

Rev. 11/2012  
No. 1.15

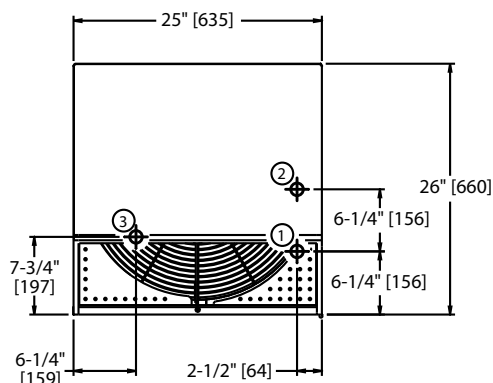


# GLASS WASHING

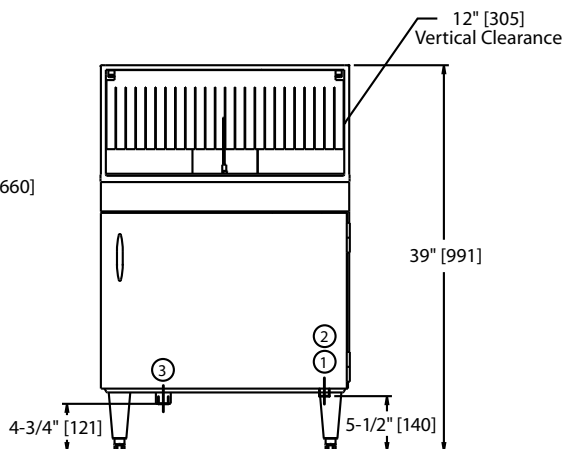
## ROTARY STYLE GLASS WASHER

MODEL: \_\_\_\_\_ PROJECT: \_\_\_\_\_ ITEM #: \_\_\_\_\_ QTY: \_\_\_\_\_

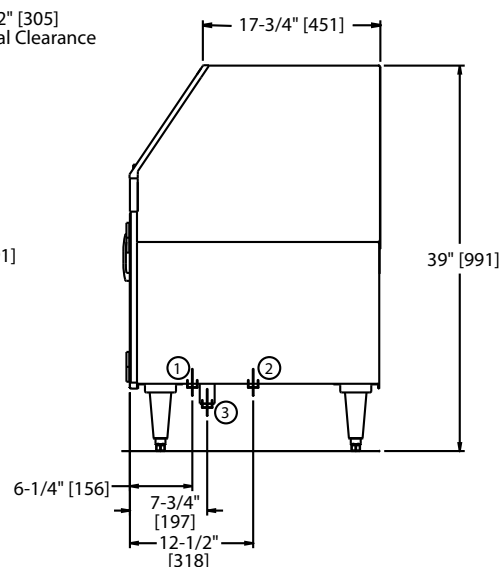
### 25" ROTARY STYLE GLASS WASHER



PLAN VIEW



FRONT VIEW



SIDE VIEW

#### SPECIFICATIONS

##### CAPACITY / HR.

2 1/2" glasses 1200

##### WATER CONSUMPTION

Cold water (approx.) 2.5 gpm  
Hot water (initial fill) 3 gpm  
Max use (approx.) 10 gph

##### TEMPERATURES °F/C

Inlet water (hot) 140-160  
Inlet water (cold) 75

##### HEATING

Tank heat, electric (kW) 3

##### CONVEYOR MOVEMENT

Clockwise

**NOTE:** Unit is supplied with 6 ft. [1829] plug-in cord.  
(NEMA 6-15P)

**WARNING:** Plumbing and electrical connections should be made by qualified personnel who will observe all applicable plumbing, sanitary and safety codes.

#### UTILITIES

##### ELECTRICAL

208-230/60/1, 15 amp

##### Ⓐ HOT WATER CONNECTION

1/2" IPS. Flow pressure 25-95 psi.

##### Ⓑ COLD WATER CONNECTION

1/2" IPS. Flow pressure 25-95 psi.

##### Ⓒ DRAIN CONNECTION

1 1/2" tailpiece

Connect to drain size according to local plumbing code

#### UNIT DIMENSIONS

	UNCRATED	CRATED
HEIGHT	39"	46 1/2"
WIDTH	25"	27"
DEPTH	27"	27 1/2"
SHIP WT. (lbs.)	156	176



#### CERTIFICATIONS:

#### APPROVED BY:

Due to our commitment to continued product improvement, specifications are subject to change without notice.

Printed in the USA

#### Krowne Metal Corporation

100 Haul Rd. Wayne, NJ 07470 • Toll Free: (800) 631-0442 • Fax: (973) 872-1129  
sales@krowne.com • www.krowne.com • www.facebook.com/KrowneMetal • www.twitter.com/KrowneMetal

Rev. 11/2012  
No. 1.15