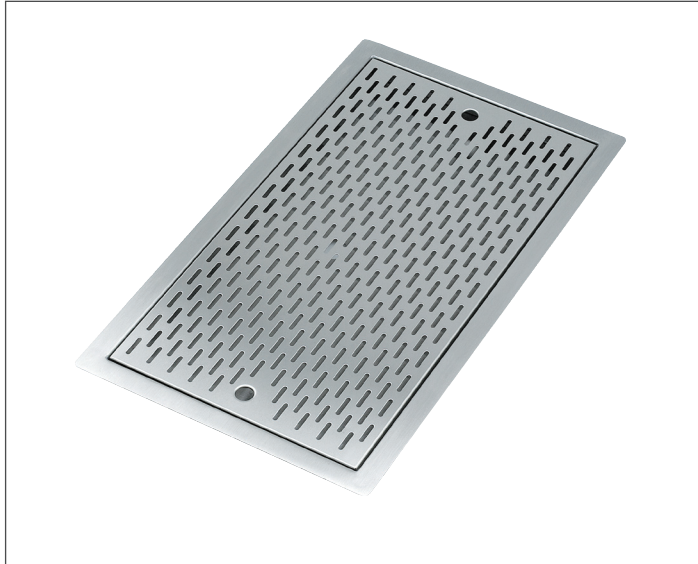




STANDARD SERIES UNDERBAR DROP-IN BAR TOP DRAINER

MODEL: _____ PROJECT: _____ ITEM #: _____ QTY: _____

PRODUCT IMAGES



KR-D36 SHOWN

AVAILABLE IN 24" & 36" LENGTHS

STANDARD FEATURES

- **Pan**
20 gauge stainless steel
- **Insert**
20 gauge stainless steel
- **Plumbing**
1/2" IPS drain connection. 1" drain opening



CERTIFICATIONS:

APPROVED BY:

Due to our commitment to continued product improvement, specifications are subject to change without notice.

Printed in the USA

Krowne Metal Corporation

100 Haul Rd. Wayne, NJ 07470 • Toll Free: (800) 631-0442 • Fax: (973) 872-1129
sales@krowne.com • www.krowne.com • www.facebook.com/KrowneMetal • www.twitter.com/KrowneMetal

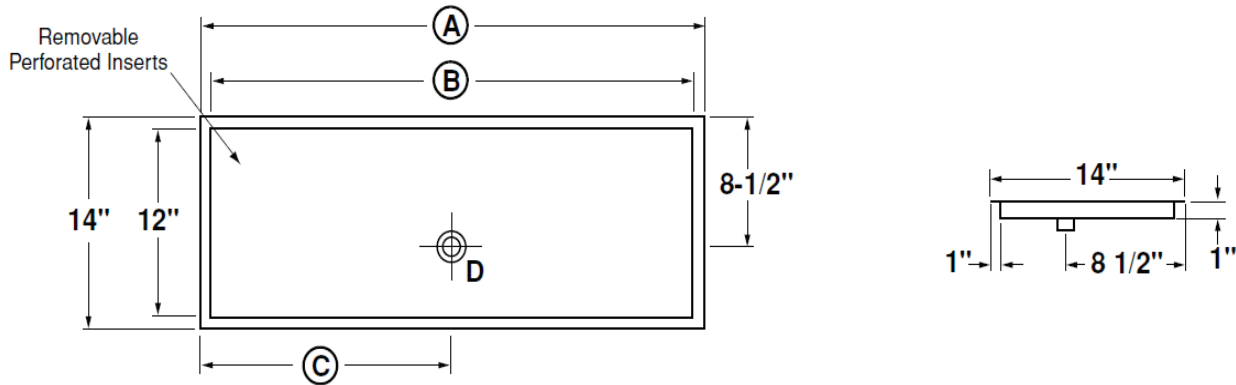
Rev. 07/2012
No. 3.3



STANDARD SERIES UNDERBAR DROP-IN BAR TOP DRAINER

MODEL: _____ PROJECT: _____ ITEM #: _____ QTY: _____

DROP-IN BAR TOP DRAINER



Model Number	Length Ⓐ	Width	Inside Dimensions Ⓑ	Drain Location Ⓒ	Weight (lbs.)
KR-D24	2'-0"	14"	22 1/2"	12"	10
KR-D36	3'-0"	14"	34 1/2"	18"	12

MECHANICAL REQUIREMENTS: 1/2" IPS drain connection



APPROVED BY: _____

CERTIFICATIONS: _____

Due to our commitment to continued product improvement, specifications are subject to change without notice.