

Set-up Stations

Mobile Stainless Steel



Model 4608
(Shown in Victorian
Cherry finish)



Model 4605
Compartment for touchscreen
terminal has clear top shield for
protection from elements.

Add Organization And Enhance The Appearance Of Dining Areas

Benefits

- Add attractive service functionality to patios and indoor dining areas
- Easy mobility to provide dining room flexibility

Features

- Stainless steel welded construction
- Choice of stainless steel or laminate exterior finishes
- Concealed casters provide built-in look
- Utility drawer holds flatware and other set-up items
- Open and concealed storage for supplies and computer terminal

Casters

- All-swivel 5" cushion tread



Open compartment option
(door removed)

Specifications:

Unit shall be of welded stainless steel construction and shall have 20-gauge sides and 18-gauge top and doors. Lower compartment floors shall be 18-gauge stainless steel. Lower compartments shall have three sets of height-adjustable (1" increment) universal ledges. Upper right open compartment shall have a 6" high front panel to house a computer terminal and a clear plexiglass top shield to provide protection from elements. Hinged lower compartment doors shall have recessed paddle latch. 5" all-swivel casters with cushion tread wheels shall be recessed/hidden and shall be fastened to a galvanized steel dolly frame for extra strength.

Spec. # _____

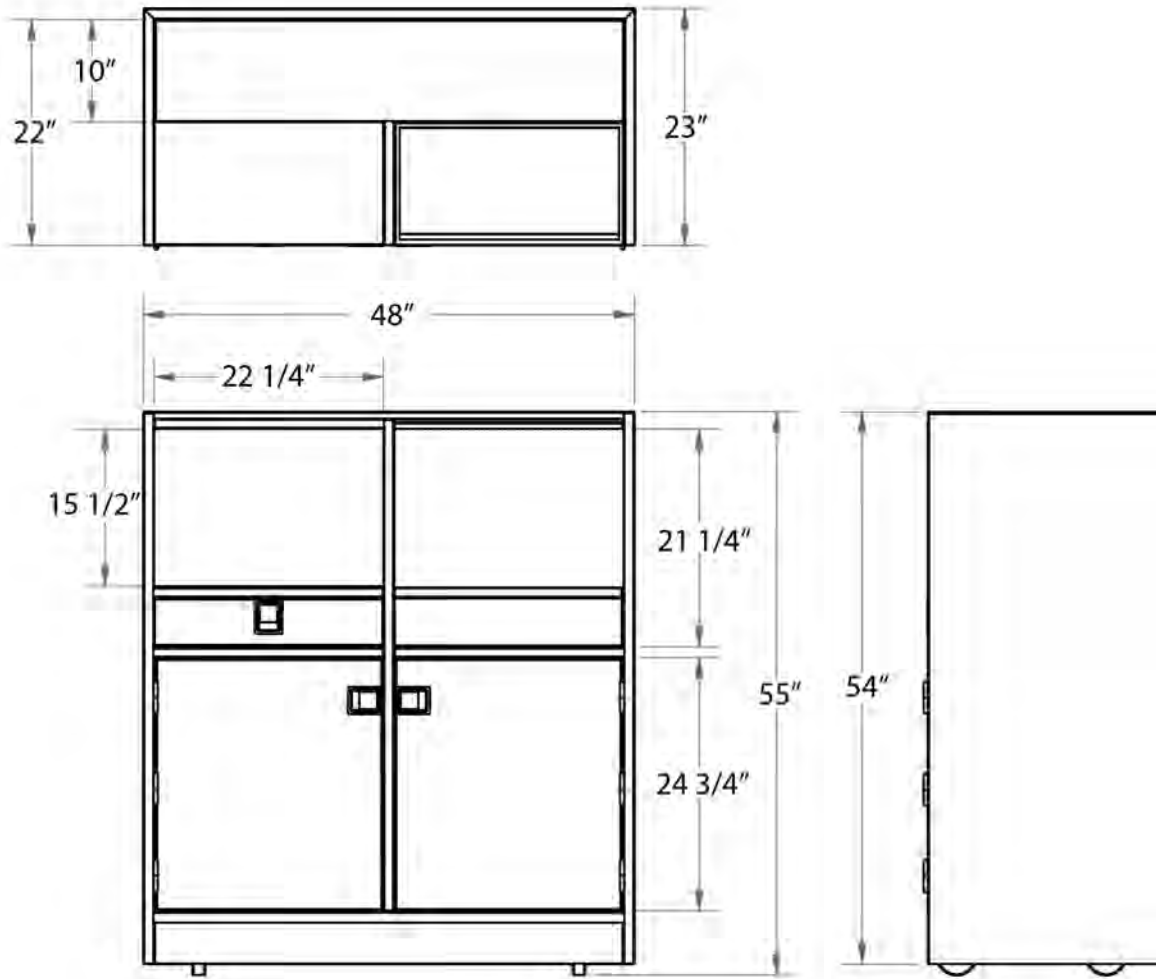
AIA # _____

Set-up & Bussing Stations

Mobile Stainless Steel

Spec. #

AIA #

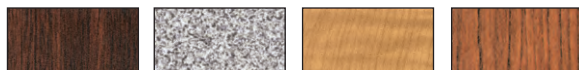


Product Information:

Model	Overall Size			Top Compartment (R)			Top Compartment (L)			Lower Compartments			Exterior Finish	Case Wt. Lbs. (Kg)
	W	D	H	W	D	H	W	D	H	W	D	H		
4605	48"	23"	55"	22 1/4"	22 1/4"	15 1/2"	22 1/4"	22 1/4"	21 1/4"	22 1/4"	21 3/4"	24 3/4"	Stainless Steel	389 (176)
	(1219)	584	1397)	(565)	565	394)	(565)	565	540)	(565)	552	629)		
4608	48"	23"	55"	22 1/4"	22 1/4"	15 1/2"	22 1/4"	22 1/4"	21 1/4"	22 1/4"	21 3/4"	24 3/4"	Laminate	396 (180)
	(1219)	584	1397)	(565)	565	394)	(565)	565	540)	(565)	552	629)		

Dimensions in () denote metric millimeters, unless otherwise noted.

Available Laminate Finishes



Walnut Gray Sand Light Maple Victorian Cherry



Beige Suede Hard Rock Maple Red Maple Red Green Black Royal Blue Purple

Options:

- Leveling feet (in place of casters)
- 6" wide tread casters
- Open lower compartment(s)



Lakeside Manufacturing, Inc.
4900 West Electric Avenue • West Milwaukee, WI 53219 U.S.A.
800-558-8565 • 414-902-6400 • Fax 414-902-6446 • www.eLakeside.com