

# Safe-Rim™ Wax Base

## Stainless Steel



Model 7504



### Specifications:

Shall be Lakeside Model 7504, designed to hold safe food temperatures for up to ninety minutes during meal transport, when used with dome and underliner. Base shall accommodate 9" round narrow-rim china plates and shall feature a footed bottom to allow quicker and even heating. Initial heat-up time shall be 1 hour and 45 minutes. Construction shall be of 20-gauge stainless steel inner and outer shells for long-lasting durability, with a wax core interior. Wax core shall heat and slowly dissipate heat for optimum food temperature retention. Base rim shall be of narrow design which shall be recessed in underliner, to minimize danger from exposed hot surface.

### Application/Features:

- Superior temperature retention for up to 90 minutes with dome and underliner
- Unique *Safe-Rim* design prevents injury to patients and employees
- Accommodates most 9" diameter round narrow-rim china plates

### Performance:

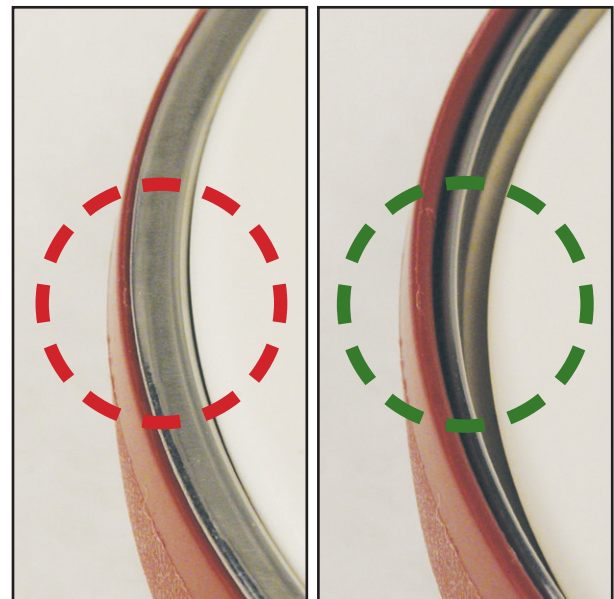
- Initial heat-up time of 1 hour 45 minutes
- Maintains safe food temperatures for up to 90 minutes

### Construction:

- Stainless steel 20-gauge inner and outer shell
- Seam-welded and hermetically sealed
- Wax core interior

### Warranty:

- 2-year parts
- 1-year labor



HOT RIM

SAFE-RIM™

Spec. # \_\_\_\_\_

AIA # \_\_\_\_\_

# Safe-Rim™ Wax Base

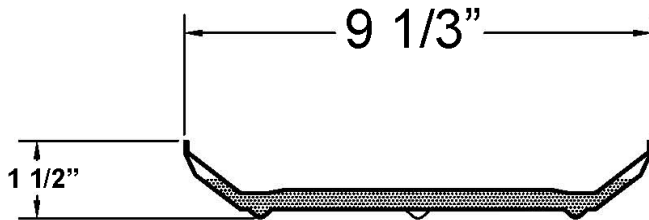
Stainless Steel

Spec. #

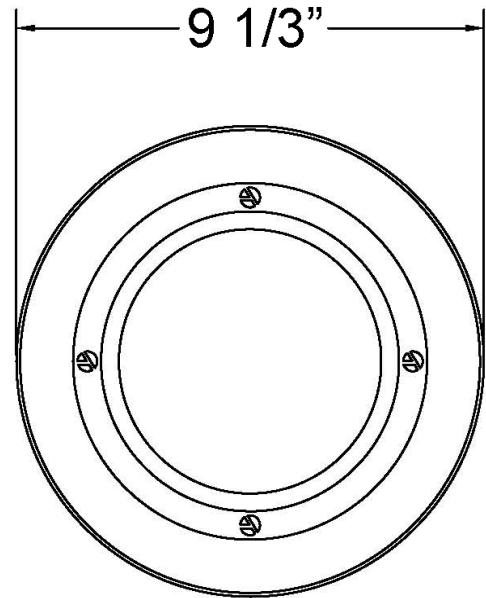
AIA #

**CAUTION**  
 Do not heat base over 300°F.  
 Do not heat base in microwave.  
 Do not heat on open flame.

Side



Top



## Model Information

Model	Diameter	Height	Pack	Case Wt. Lb. (kg)	Case Cube Cu. Ft. (m <sup>3</sup> )
7504	9 1/3" (237)	1 1/2" (39)	12 / Case	20 (9.1)	0.6 (0.02)

Measurements in ( ) denote metric millimeters, unless otherwise specified.



Lakeside Manufacturing, Inc.  
 4900 West Electric Avenue • West Milwaukee, WI 53219 U.S.A.  
 800-558-8565 • 414-902-6400 • Fax 414-902-6446 • www.eLakeside.com