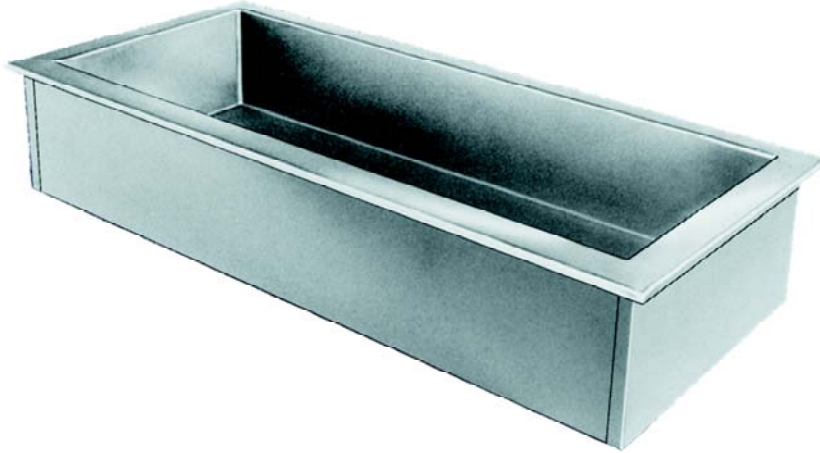


Production Equipment 4000 Series

Ice Cooled Cold Pan
Drop-in



ITEM # _____

PROJECT _____

DATE _____

MODEL	DIM
4016-ICD	15 7/8"L
4029-ICD	28 5/8"L
4042-ICD	41 3/8"L
4055-ICD	54 1/8"L
4067-ICD	66 7/8"L
4080-ICD	79 5/8"L

SUMMARY

Ice Cooled Cold pan for 6" deep full size pans w/ removable false bottom and drain

OPTIONS

- Custom sizes and styles available, contact factory for details
- Gate valve

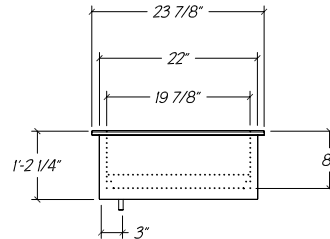
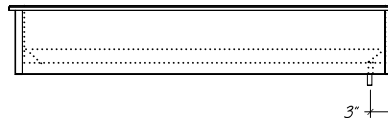
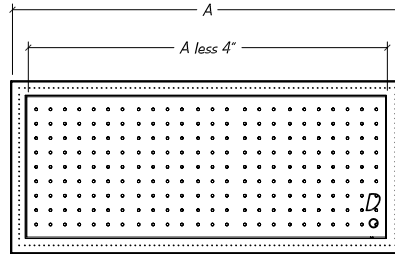
SPECIFICATIONS:

TOP: Top and interior liner of one-piece construction of 18 GA stainless steel

TANK: Interior liner kinked to 1" MPT drain, interior bottom has perforated stainless steel false bottom

EXTERIOR: Exterior housing of 20 GA galvanized steel

INSULATION: High-Density closed cell polyurethane



MODEL	# OF PANS FULL SIZE	DIM A	CUTOUT SIZE
4016-ICD	1	15 7/8"	14 5/8" x 22 3/4"
4029-ICD	2	28 5/8"	27 3/8" x 22 3/4"
4042-ICD	3	41 3/8"	40 1/8" x 22 3/4"
4055-ICD	4	54 1/8"	52 7/8" x 22 3/4"
4067-ICD	5	66 7/8"	65 5/8" x 22 3/4"
4080-ICD	6	79 5/8"	78 3/8" x 22 3/4"