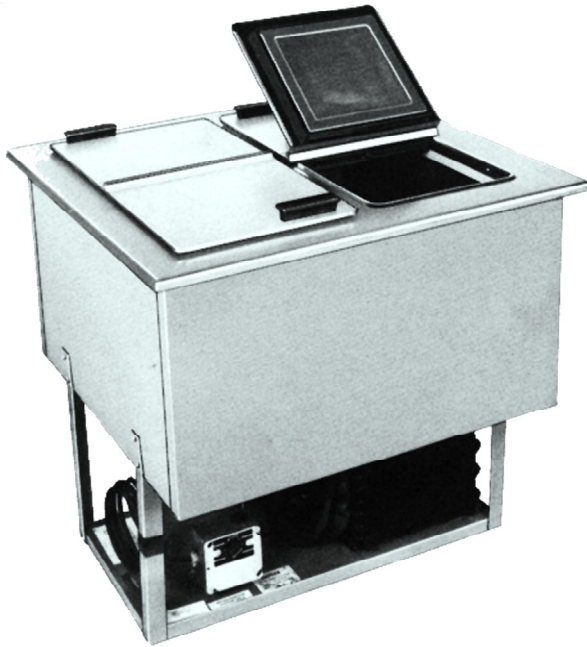


## Production Equipment 5040

Dual Ice Cream Freezer, Self Contained  
Drop-In



### SPECIFICATIONS:

**TOP:** Top construction of 18 GA stainless steel

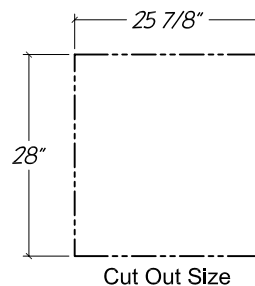
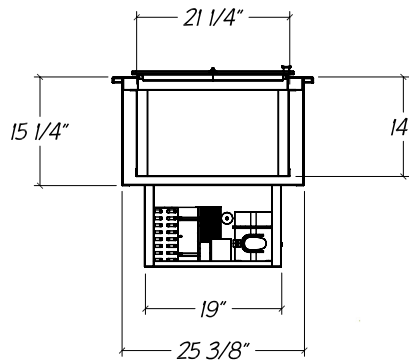
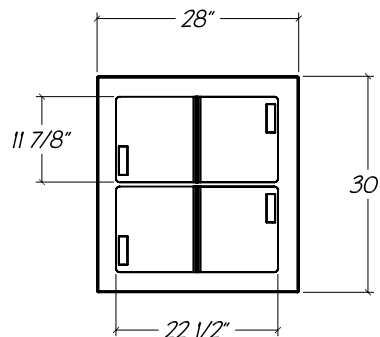
**OPENING:** (2) die-stamped 10 3/8" x 20 5/8" openings fitted with insulated split-hinged lids

**INTERIOR:** Freezer compartment interior is 23 1/2" x 21 1/4" x 13 3/4" high 22 GA stainless steel, Sides wrapped with refrigeration lines

**INSULATION:** Bottom and sides insulated with high-density closed cell polyurethane

**CONDENSING UNIT:** Mounted below freezer compartment on 14 GA galvanized steel frame, 1/4-HP 115v/60Hz/1Ph (6 amp) compressor with 8 foot cord & 5-15-P plug

**REFRIGERATION:** Self-contained unit has a low-temperature balanced system using a hermetically sealed condenser, Capillary tube system with temperature control, System comes assembled with cord and 5-15-P plug, Base tested to operate between -5 and 0 degrees F



ITEM # \_\_\_\_\_

PROJECT \_\_\_\_\_

DATE \_\_\_\_\_

MODEL  
5040

DIM  
30"W

### SUMMARY

Ice Cream/Plate Chiller  
w/ (2) split hinged lids,  
Drop-in, Self contained

### OPTIONS

- Stainless Steel louvered panel available for field installation
- Custom S/S locking bar device