

Modular Equipment 10000 Series

Refrigerated Bases - Stainless Steel Top

Self-contained



L-10162 shown with options

SPECIFICATIONS:

TOP: Die-formed construction of one-piece 16 GA stainless steel type 304-#4 finish with 2 5/8" nosing, Backsplash to be 3/8" covered, 6" high x 2 1/8" wide, Sheared ends fitted with recessed 12 GA steel bars for adjoining units, producing a hairline seam

EXTERIOR: Back, bottom, and sides of 20 GA steel with painted enamel finish, Body supported by 14 GA galvanized steel box channels for legs

CONDENSER HOUSING: Fitted with a stainless steel snap-on louvered panel

INTERIOR: Bottom and Back of 22 GA stainless steel type 304-#2B finish, sides of one-piece high impact plastic, Top of aluminum

DOOR JAMS: One-piece high-impact plastic with concealed magnets on perimeter for positive sealing

DOORS: Exterior of one-piece die-stamped 22 GA stainless steel type 304-#4 finish, Interior of high-impact plastic, Gasket mounted w/ aluminum strips and screws for easy removability and to ensure a proper seal, Doors mounted on 12 GA spring-loaded self-closing hinges, Stainless handle with stamped grip

SHELVES: One, removable heavy-steel frame epoxy-coated shelf per door

LEGS: 8" high legs standard, 1 5/8" tubing welded to steel plate and fastened to body support channels, Bullet-foot has 1 1/8" of adjustment, All legs are stainless steel

REFRIGERATION: Self-contained unit has a high-temperature balanced system using a hermetically sealed condenser, Forced-air evaporator with protective-coated coil and expansion valve, System comes assembled with cord and 5-15-P plug, Base tested to operate between 36 and 40 degrees F

ITEM # _____

PROJECT _____

DATE _____

MODEL	LENGTH
L-10138	38"
L-10150	50"
L-10156	56"
L-10162	62"
L-10168	68"
L-10174	74"
L-10180	80"
L-10186	86"
L-10192	92"
L-10198	98"
L-10104	104"
L-10110	110"

DEPTH
23", 28" OR 32"

FEATURES

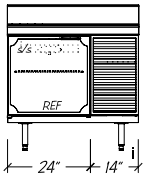
- Available with other modular equipment under one top up to 10 feet in length
- 16 GA reinforced top
- Self-contained unit
- Self-closing doors
- (1) Wire shelf per door
- Refrigeration system has expansion valve & temp. control for rapid recovery
- Uniform integration in design, quality and parts

OPTIONS

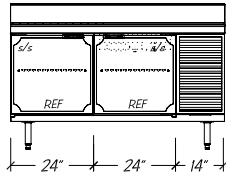
- Casters (specify working height)
- Compressor Left
- Drawers
- Custom Lengths
- Bun Pan Racks (pans by others)

Modular Equipment L-10000 Series - S/S Work Top

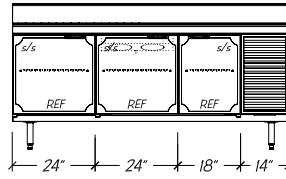
DIMENSIONAL DATA



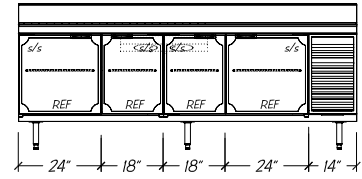
L-10138



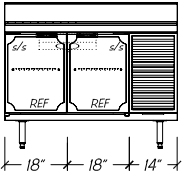
L-10162



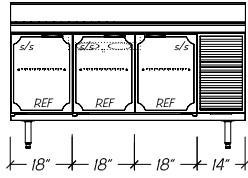
L-10180



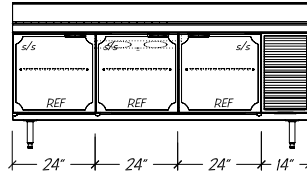
L-10198



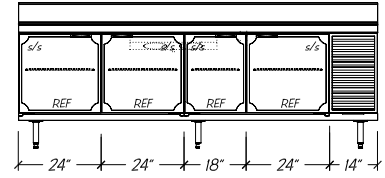
L-10150



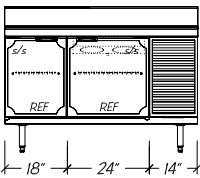
L-10168



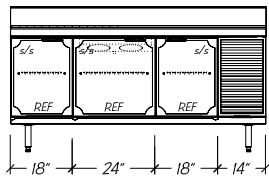
L-10186



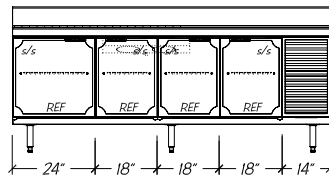
L-10104



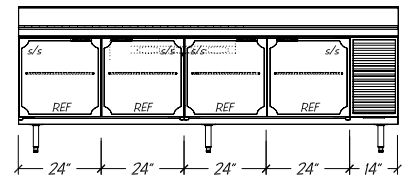
L-10156



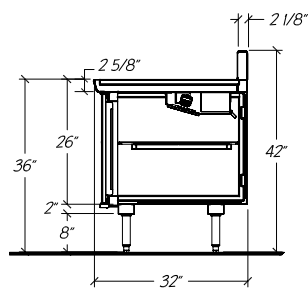
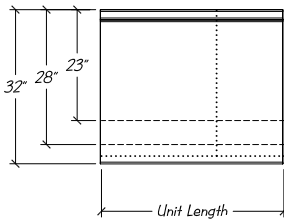
L-10174



L-10192



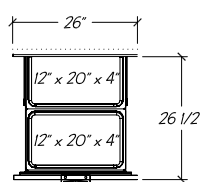
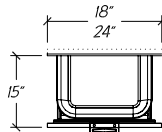
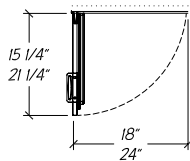
L-10110



Standard Self-closing Doors

Optional Refrigerated Drawers

Optional 26" Refrigerated Drawers (adds 2" to unit length)



shown w/ optional full extension drawer slides

- Notes:**
- Compressor left available
 - Custom units may require modified BTU ratings and/or condensing unit HP
 - Optional hot gas condensate evaporator is factory recommended, if electric evaporator is required, add 0.39 AMP to total

STATISTICAL DATA

MODEL	LGTH	CAP. CU. FT.			SHELVING (SQ FT)			# PER UNIT	CONDENSING UNIT ⁱⁱ	VOLTS/ CYCLE/ PHASE	TOTAL AMPS ⁱⁱⁱ	NEMA PLUG	SHIP WT.
		23"	28"	32"	23"	28"	32"						
L-10138	38"	3.9	4.6	5.6	4.5	5.9	7.0	1	1/4-HP R-134A	115v/60/1	7.75	5-15-P	365#
L-10150	50"	5.8	7.8	9.4	7.3	9.5	11.3	2	1/4-HP R-134A	115v/60/1	7.75	5-15-P	400#
L-10156	56"	6.9	9.3	11.2	8.6	11.3	13.4	2	1/4-HP R-134A	115v/60/1	8.38	5-15-P	440#
L-10162	62"	8.1	10.9	13.1	10.0	13.1	15.5	2	1/4-HP R-134A	115v/60/1	8.38	5-15-P	475#
L-10168	68"	9.4	12.5	15.0	11.4	14.8	17.6	3	1/4-HP R-134A	115v/60/1	8.38	5-15-P	510#
L-10174	74"	10.6	14.1	16.9	12.7	16.6	19.7	3	1/4-HP R-134A	115v/60/1	8.38	5-15-P	535#
L-10180	80"	11.6	15.5	18.6	14.1	18.4	21.8	3	1/4-HP R-134A	115v/60/1	8.38	5-15-P	570#
L-10186	86"	12.8	17.1	20.5	15.5	20.2	24.0	3	1/3-HP R-134A	115v/60/1	10.78	5-15-P	605#
L-10192	92"	14.1	18.7	22.4	16.8	22.0	26.1	4	1/3-HP R-134A	115v/60/1	10.78	5-15-P	630#
L-10198	98"	15.3	20.3	24.3	18.2	23.7	28.2	4	1/3-HP R-134A	115v/60/1	10.78	5-15-P	650#
L-10104	104"	16.5	21.9	26.2	19.6	25.5	30.3	4	1/3-HP R-134A	115v/60/1	10.78	5-15-P	675#
L-10110	110"	17.4	23.2	27.8	20.9	27.3	32.4	4	1/3-HP R-134A	115v/60/1	11.42	5-20-P	695#

Modular Equipment 10000 Series MECHANICAL DATA

- Ⓒ Condensing unit wired to junction box 24" AFF, rear of condenser compartment is open for cord to exit 115V/60/1
- Ⓢ On/off switch 24" AFF with 8 foot cord and plug 5-15-P
- Ⓞ 5/8" OD copper drain for condensate evaporator 14 1/2" AFF

