

Modular Equipment 11000 Series

Refrigerated Bases - Stainless Steel Top
Remote



L-11172 shown with options

SPECIFICATIONS:

TOP: Die-formed construction of one-piece 16 GA stainless steel type 304-#4 finish with 2 5/8" nosing, Backsplash to be 3/8" covered, 6" high x 2 1/8" wide, Sheared ends fitted with recessed 12 GA steel bars for adjoining units, producing a hairline seam

EXTERIOR: Back, bottom, and sides of 20 GA steel with painted enamel finish, Body supported by 14 GA galvanized steel box channels for legs

INTERIOR: Bottom and Back of 22 GA stainless steel type 304-#2B finish, sides of one-piece high impact plastic, Top of aluminum

INSULATION: Rigid Polyurethane Foam

DOOR JAMS: One-piece high-impact plastic with concealed magnets on perimeter for positive sealing

DOORS: Exterior of one-piece die-stamped 22 GA stainless steel type 304-#4 finish, Interior of high-impact plastic, Gasket mounted w/ aluminum strips and screws for easy removability and to ensure a proper seal, Doors mounted on 12 GA spring-loaded self-closing hinges, Stainless handle with stamped grip

SHELVES: One, removable heavy-steel frame epoxy-coated shelf per door

LEGS: 8" high legs standard, 1 5/8" tubing welded to steel plate and fastened to body support channels, Bullet-foot has 1 1/8" of adjustment, All legs are stainless steel

REFRIGERATION: Remote unit has a forced-air evaporator with protective-coated coil and expansion valve, System comes assembled with a junction box ready for final connection, Recommended temperature to operate between 36 and 40 degrees F (condenser and control not included)

ITEM # _____

PROJECT _____

DATE _____

MODEL	LENGTH
L-11124	24"
L-11136	36"
L-11142	42"
L-11148	48"
L-11154	54"
L-11160	60"
L-11166	66"
L-11172	72"
L-11178	78"
L-11184	84"
L-11190	90"
L-11196	96"

DEPTH
23", 28" OR 32"

FEATURES

- Available with other modular equipment under one top up to 10 feet in length
- 16 GA reinforced top
- Remote unit
- Self-closing doors
- (1) Wire shelf per door
- Refrigeration system has expansion valve for rapid recovery
- Uniform integration in design, quality and parts

OPTIONS

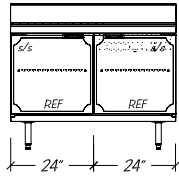
- Casters (specify working height)
- Drawers
- Custom Lengths
- Bun Pan Racks (pans by others)
- Electric Condensate Evaporator
- Solenoid valve & temp. control
- Balanced Port Expansion Valve

Modular Equipment L-11000 Series - S/S Work Top

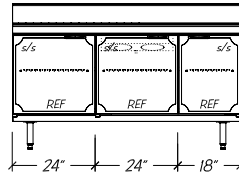
DIMENSIONAL DATA



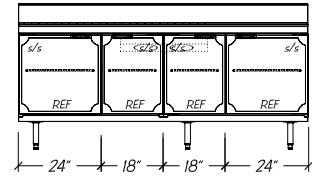
L-11124



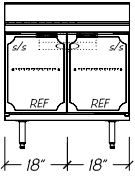
L-11148



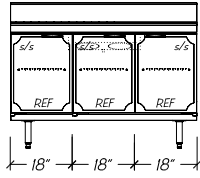
L-11166



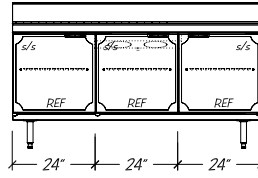
L-11184



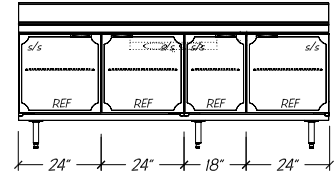
L-11136



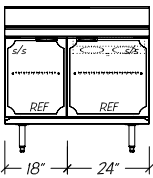
L-11154



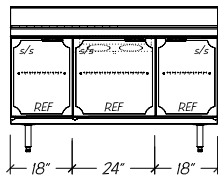
L-11172



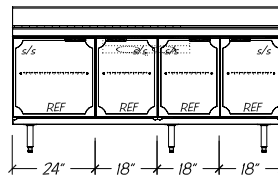
L-11190



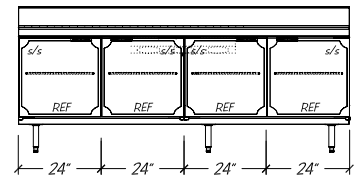
L-11142



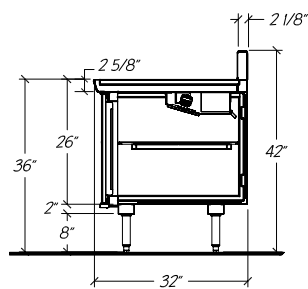
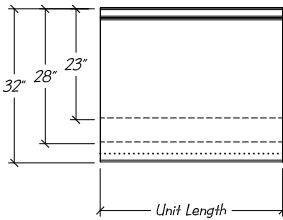
L-11160



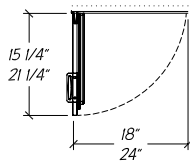
L-11178



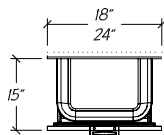
L-11196



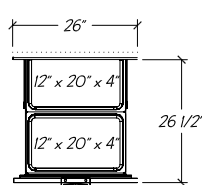
Standard Self-closing Doors



Optional Refrigerated Drawers



Optional 26" Refrigerated Drawers (adds 2" to unit length)



shown w/ optional full extension drawer slides

- Notes:**
- Custom units may require upgraded BTU ratings on evaorator coil(s) and/or condensing unit HP
 - If electric condensate evaporator is required, add .39 AMPS to total
 - Recommended HP with up to 25 ft. of refrigeration line (at installers discretion)

STATISTICAL DATA

MODEL	LGTH	CAP. CU. FT.			SHELVING (SQ FT)			# PER UNIT	BTU PER HOUR 10 TD ⁱ	VOLTS/ CYCLE/ PHASE	TOTAL AMPS ⁱⁱ	REC. HP ⁱⁱⁱ	SHIP WT.
		23"	28"	32"	23"	28"	32"						
L-11124	24"	3.9	4.6	5.6	4.5	5.9	7.0	1	1,000 R-134A	115v/60/1	.64	1/4	235#
L-11136	36"	5.8	7.8	9.4	7.3	9.5	11.3	2	1,000 R-134A	115v/60/1	.64	1/4	305#
L-11142	42"	6.9	9.3	11.2	8.6	11.3	13.4	2	1,300 R-134A	115v/60/1	1.28	1/4	340#
L-11148	48"	8.1	10.9	13.1	10.0	13.1	15.5	2	1,300 R-134A	115v/60/1	1.28	1/4	375#
L-11154	54"	9.4	12.5	15.0	11.4	14.8	17.6	3	1,300 R-134A	115v/60/1	1.28	1/4	405#
L-11160	60"	10.6	14.1	16.9	12.7	16.6	19.7	3	1,300 R-134A	115v/60/1	1.28	1/4	435#
L-11166	66"	11.6	15.5	18.6	14.1	18.4	21.8	3	1,300 R-134A	115v/60/1	1.28	1/4	470#
L-11172	72"	12.8	17.1	20.5	15.5	20.2	24.0	3	1,700 R-134A	115v/60/1	1.28	1/3	500#
L-11178	78"	14.1	18.7	22.4	16.8	22.0	26.1	4	1,700 R-134A	115v/60/1	1.28	1/3	525#
L-11184	84"	15.3	20.3	24.3	18.2	23.7	28.2	4	1,700 R-134A	115v/60/1	1.28	1/3	550#
L-11190	90"	16.5	21.9	26.2	19.6	25.5	30.3	4	1,700 R-134A	115v/60/1	1.28	1/3	575#
L-11196	96"	17.4	23.2	27.8	20.9	27.3	32.4	4	2,300 R-134A	115v/60/1	1.92	1/3	590#

Modular Equipment 11000 Series MECHANICAL DATA

- Junction Box 8" AFF hard-wired to coil
- 5/8" OD copper drain for condensate evaporator 8" AFF
- Refrigeration Lines, 1/4" inlet and 3/8" suction 8" AFF
- A** Centered on refrigerated compartment
- B** 7 5/16" on units up to 50", 9 5/16" on units up to 80", 11" on units up to 112"
- C** Centered between leg channels

