

Modular Equipment 12000-B Series

**Bloomington-Style
Recessed Opening - Salad Top
Self-contained Refrigerated Base**



L-12186-B shown with options (pans not included)

SPECIFICATIONS:

TOP: Die-formed construction of one-piece 16 GA stainless steel type 304-#4 finish with recessed 12 GA steel bars for reinforcement

EXTERIOR: Back, bottom, and sides of 20 GA steel with painted enamel finish, Body supported by 14 GA galvanized steel box channels for legs

INTERIOR: Bottom, Back, and Top of 22 GA stainless steel type 304-#2B finish, sides of one-piece high impact plastic

DOOR JAMS: One-piece high-impact plastic with concealed magnets on perimeter for positive sealing

DOORS: Exterior of one-piece die-stamped 22 GA stainless steel type 304-#4 finish, Interior of high-impact plastic, Gasket mounted w/ aluminum strips and screws for easy removability and to ensure a proper seal, Doors mounted on 12 GA spring-loaded self-closing hinges, Stainless handle with stamped grip

SHELVES: One, removable heavy-steel frame epoxy-coated shelf per door

LEGS: 8" high legs standard, 1 5/8" tubing welded to steel plate and fastened to body support channels, Bullet-foot has 1 1/8" of adjustment, All legs are stainless steel

BLOOMINGTON STYLE RECESSED PAN - SALAD TOP:

NSF standard #7 compartment of 22 GA stainless steel 304-#2B finish, Mechanically-cooled, cold wall tank is controlled by its own pressure control with on/off switch, 3" Recessed openings can accommodate fractional-size pans up to 6" deep, Pans to sit on removable clip mounted to inside of tank with plastic thumb screws, Tank is tested to hold "product" temperature between 33-41 degrees Fahrenheit (*pans not included*)

REFRIGERATION: Self-contained unit has a high-temperature balanced system using a hermetically sealed condenser, Forced-air evaporator with protective-coated coil and expansion valve, System comes assembled with cord and 5-15-P plug, Base tested to operate between 36 and 40 degrees F

****RAIL PERFORMANCE:**

CONDIMENTS MUST BE REMOVED AT NIGHT TO PREVENT FREEZING OF RAIL/PRODUCT, ON/OFF SWITCH IS PROVIDED IN FRONT PANEL TO CONTROL RAIL (ONLY)

ITEM # _____

PROJECT _____

DATE _____

MODEL	LENGTH
L-12138-B	38"
L-12150-B	50"
L-12156-B	56"
L-12162-B	62"
L-12168-B	68"
L-12174-B	74"
L-12180-B	80"
L-12186-B	86"
L-12192-B	92"
L-12198-B	98"
L-12104-B	104"
L-12110-B	110"

DEPTH
28" OR 32"

FEATURES

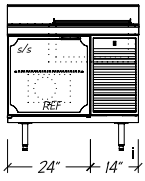
- 16 GA reinforced top
- Self-contained unit
- Self-closing doors
- Cold-wall construction
- 3" recessed opening
- Wrapped tank flat top for fractional size pans (pans not incl)
- NSF cutting board
- (1) Wire shelf per door
- Refrigeration system has expansion valve & temp. control for rapid recovery
- Uniform integration in design, quality and parts

OPTIONS

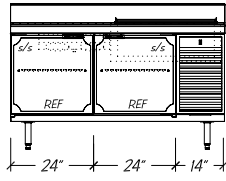
- Casters (specify working height)
- Compressor Left
- Custom Openings
- Drawers (n/a under pan opening)
- Bun Pan Racks (pans by others)

Modular Equipment L-12000-B Series - Bloomington-Style Recessed Opening

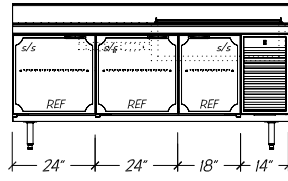
DIMENSIONAL DATA



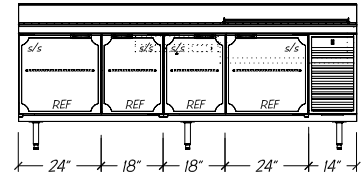
L-12138-B



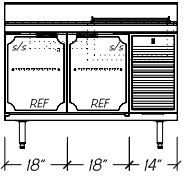
L-12162-B



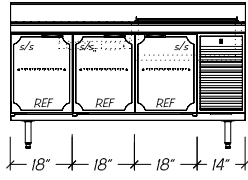
L-12180-B



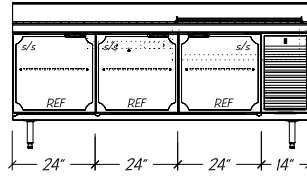
L-12198-B



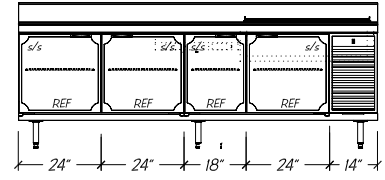
L-12150-B



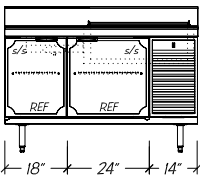
L-12168-B



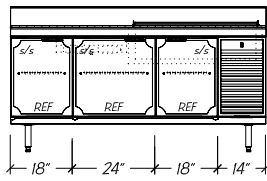
L-12186-B



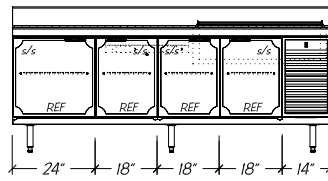
L-12104-B



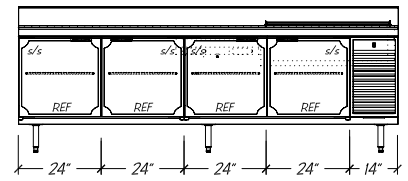
L-12156-B



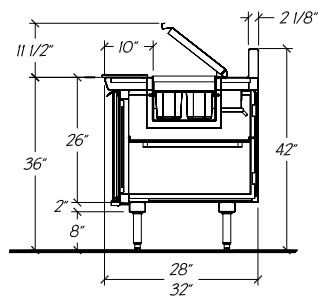
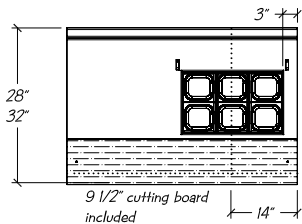
L-12174-B



L-12192-B



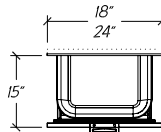
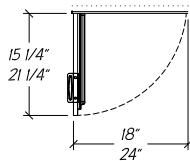
L-12110-B



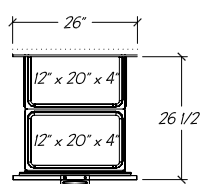
Standard Self-closing Doors

Optional Refrigerated Drawers

Optional 26" Refrigerated Drawers (adds 2" to unit length)



*Drawers not available in front of rail



shown w/ optional full extension drawer slides

- Notes:**
- i. Compressor left available with recessed opening mirror imaged, opening position relative to compressor position
 - ii. Pans not included
 - iii. Custom units may require modified BTU ratings and/or condensing unit HP
 - iv. Optional hot gas condensate evaporator is factory recommended, if electric evaporator is required, add 0.39 AMP to total

STATISTICAL DATA

MODEL	LGTH	QTY 1/6 SIZE PANS ⁱⁱ	SHELVES PER UNIT	CONDENSING UNIT ⁱⁱⁱ	VOLTS/ CYCLE/ PHASE	TOTAL AMPS ^{iv}	NEMA PLUG	SHIP WT.
L-12138-B	38"	6	1	1/4-HP R-134A	115v/60/1	7.75	5-15-P	375#
L-12150-B	50"	6	2	1/4-HP R-134A	115v/60/1	7.75	5-15-P	420#
L-12156-B	56"	8	2	1/4-HP R-134A	115v/60/1	7.75	5-15-P	460#
L-12162-B	62"	8	2	1/4-HP R-134A	115v/60/1	8.38	5-15-P	495#
L-12168-B	68"	8	3	1/4-HP R-134A	115v/60/1	8.38	5-15-P	530#
L-12174-B	74"	10	3	1/4-HP R-134A	115v/60/1	8.38	5-15-P	565#
L-12180-B	80"	10	3	1/4-HP R-134A	115v/60/1	8.38	5-15-P	605#
L-12186-B	86"	10	3	1/3-HP R-134A	115v/60/1	10.78	5-15-P	640#
L-12192-B	92"	10	4	1/3-HP R-134A	115v/60/1	10.78	5-15-P	665#
L-12198-B	98"	10	4	1/3-HP R-134A	115v/60/1	10.78	5-15-P	690#
L-12104-B	104"	10	4	1/3-HP R-134A	115v/60/1	10.78	5-15-P	710#
L-12110-B	110"	10	4	1/3-HP R-134A	115v/60/1	10.78	5-15-P	735#

Modular Equipment 12000 Series MECHANICAL DATA

- Condensing unit wired to junction box 24" AFF, rear of condenser compartment is open for cord to exit 115V/60/1
- On/off switch 24" AFF with 8 foot cord and plug 5-15-P
- 5/8" OD copper drain for condensate evaporator 14 1/2" AFF
- On/off switch for rail

