

Modular Equipment 13000-B Series

**Bloomington-Style
Recessed Opening - Salad Top
Remote Refrigerated Base**



L-13184-B shown with options (pans not included)

SPECIFICATIONS:

TOP: Die-formed construction of one-piece 16 GA stainless steel type 304-#4 finish with recessed 12 GA steel bars for reinforcement

EXTERIOR: Back, bottom, and sides of 20 GA steel with painted enamel finish, Body supported by 14 GA galvanized steel box channels for legs

INTERIOR: Bottom, Back, and Top of 22 GA stainless steel type 304-#2B finish, sides of one-piece high impact plastic

DOOR JAMS: One-piece high-impact plastic with concealed magnets on perimeter for positive sealing

DOORS: Exterior of one-piece die-stamped 22 GA stainless steel type 304-#4 finish, Interior of high-impact plastic, Gasket mounted w/ aluminum strips and screws for easy removability and to ensure a proper seal, Doors mounted on 12 GA spring-loaded self-closing hinges, Stainless handle with stamped grip

SHELVES: One, removable heavy-steel frame epoxy-coated shelf per door

LEGS: 8" high legs standard, 1 5/8" tubing welded to steel plate and fastened to body support channels, Bullet-foot has 1 1/8" of adjustment, All legs are stainless steel

BLOOMINGTON STYLE RECESSED PAN - SALAD TOP:

NSF standard #7 compartment of 22 GA stainless steel 304-#2B finish, Mechanically-cooled, cold wall tank is controlled by its own pressure control with on/off switch, 3" Recessed openings can accommodate fractional-size pans up to 6" deep, Pans to sit on removable clip mounted to inside of tank with plastic thumb screws, Tank is designed to hold "product" temperature between 33-41 degrees Fahrenheit (*pans not included*)

REFRIGERATION: Remote unit has a forced-air evaporator with protective-coated coil and expansion valve, System comes assembled with junction box ready for final connection, Base tested to operate between 36 and 40 degrees F

****RAIL PERFORMANCE:**

CONDIMENTS MUST BE REMOVED AT NIGHT TO PREVENT FREEZING OF RAIL/PRODUCT, ON/OFF SWITCH IS PROVIDED IN FRONT PANEL TO CONTROL RAIL (ONLY)

ITEM # _____

PROJECT _____

DATE _____

MODEL	LENGTH
L-13136-B	36"
L-13148-B	48"
L-13154-B	54"
L-13160-B	60"
L-13166-B	66"
L-13172-B	72"
L-13178-B	78"
L-13184-B	84"
L-13190-B	90"
L-13196-B	96"
L-13102-B	102"
L-13108-B	108"

DEPTH
28" OR 32"

FEATURES

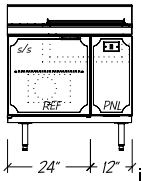
- 16 GA reinforced top
- Remote unit
- Self-closing doors
- Cold-wall construction 3" recessed opening
- Wrapped tank flat top for fractional size pans (pans not incl)
- NSF cutting board
- (1) Wire shelf per door
- Refrigeration system has expansion valve
- Uniform integration in design, quality and parts

OPTIONS

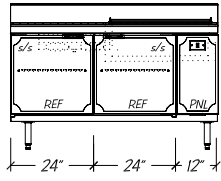
- Casters (specify working height)
- Solenoid valve & temp. control
- Custom Openings
- Drawers (n/a under pan opening)
- Bun Pan Racks (pans by others)
- Electric Condensate Evaporator

Modular Equipment L-13000-B Series - Bloomington-Style Recessed Opening

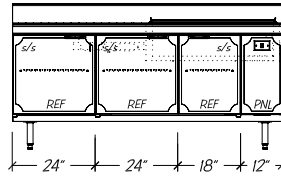
DIMENSIONAL DATA



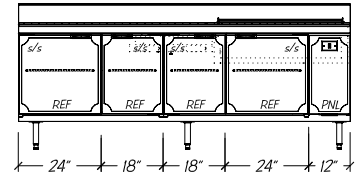
L-13136-B



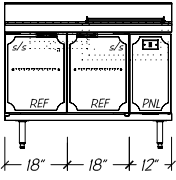
L-13160-B



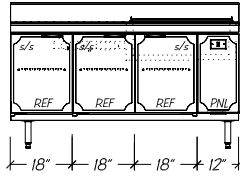
L-13178-B



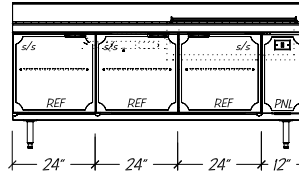
L-13196-B



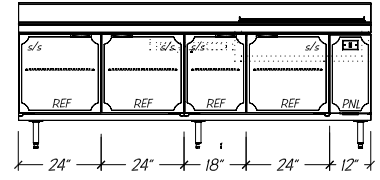
L-13148-B



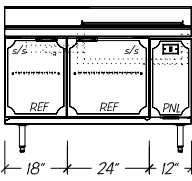
L-13166-B



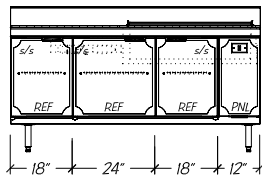
L-13184-B



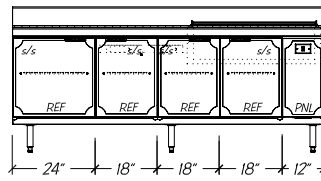
L-13102-B



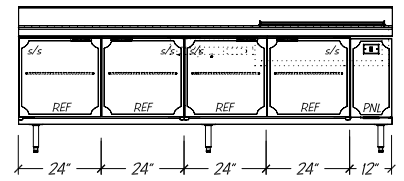
L-13154-B



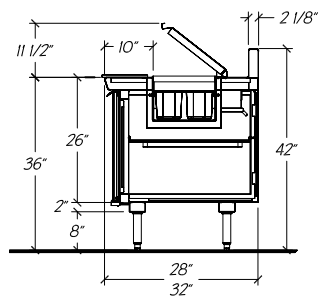
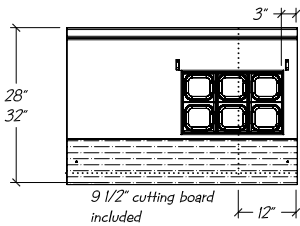
L-13172-B



L-13190-B



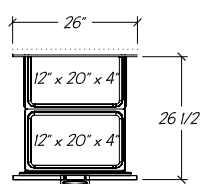
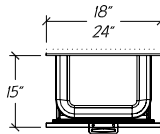
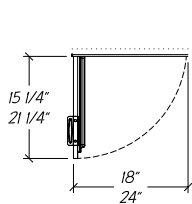
L-13108-B



Standard Self-closing Doors

Optional Refrigerated Drawers

Optional 26" Refrigerated Drawers (adds 2" to unit length)



*Drawers not available in front of rail

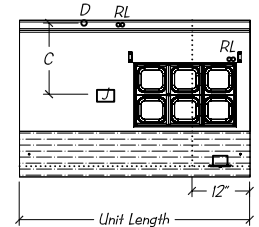
shown w/ optional full extension drawer slides

STATISTICAL DATA

MODEL	LGTH	QTY 1/6 SIZE PANS ⁱⁱ	SHELVES PER UNIT	BTU PER HOUR 10 TD ⁱⁱⁱ	VOLTS/ CYCLE/ PHASE	TOTAL AMPS ^{iv}	REC. COMP. ^v	SHIP WT.
L-13136-B	36"	6	1	800 R-134A	115v/60/1	0.64	1/4	240#
L-13148-B	48"	6	2	1,000 R-134A	115v/60/1	0.64	1/4	315#
L-13154-B	54"	8	2	1,000 R-134A	115v/60/1	0.64	1/4	350#
L-13160-B	60"	8	2	1,300 R-134A	115v/60/1	1.28	1/4	385#
L-13166-B	66"	8	3	1,300 R-134A	115v/60/1	1.28	1/4	415#
L-13172-B	72"	10	3	1,300 R-134A	115v/60/1	1.28	1/4	445#
L-13178-B	78"	10	3	1,300 R-134A	115v/60/1	1.28	1/4	480#
L-13184-B	84"	10	3	1,700 R-134A	115v/60/1	1.28	1/3	515#
L-13190-B	90"	10	4	1,700 R-134A	115v/60/1	1.28	1/3	540#
L-13196-B	96"	10	4	1,700 R-134A	115v/60/1	1.28	1/3	565#
L-13102-B	102"	10	4	1,700 R-134A	115v/60/1	1.28	1/3	590#
L-13108-B	108"	10	4	1,700 R-134A	115v/60/1	1.28	1/3	625#

Modular Equipment 13000 Series MECHANICAL DATA

- Junction Box 8" AFF hard-wired to coil
- 5/8" OD copper drain for condensate evaporator 8" AFF
- Refrigeration Lines, 1/4" inlet and 3/8" suction 8" AFF
- Centered between leg channels
- On/off switch for recessed rail



- Notes:**
- i. Control housing left available with recessed opening mirror imaged, opening position relative to control panel
 - ii. Pans not included
 - iii. Custom units may require modified BTU ratings and/or condensing unit HP
 - iv. Optional electric condensate evaporator, add 0.39 AMP to total
 - v. Recommended HP up to 25' of refrigeration line (at installers discretion)