

**Modular Equipment 14000-B Series**

**Bloomington-Style  
Raised Rail Top  
Self-Contained Refrigerated Base**



L-14162-B shown with options (pans not included)

**SPECIFICATIONS:**

**TOP:** Die-formed construction of one-piece 16 GA stainless steel type 304-#4 finish with recessed 12 GA steel bars for reinforcement

**EXTERIOR:** Back, bottom, and sides of 20 GA steel with painted enamel finish, Body supported by 14 GA galvanized steel box channels for legs

**INTERIOR:** Bottom, Back, and Top of 22 GA stainless steel type 304-#2B finish, sides of one-piece high impact plastic

**DOOR JAMS:** One-piece high-impact plastic with concealed magnets on perimeter for positive sealing

**DOORS:** Exterior of one-piece die-stamped 22 GA stainless steel type 304-#4 finish, Interior of high-impact plastic, Gasket mounted w/ aluminum strips and screws for easy removability and to ensure a proper seal, Doors mounted on 12 GA spring-loaded self-closing hinges, Stainless handle with stamped grip

**SHELVES:** One, removable heavy-steel frame epoxy-coated shelf per door

**LEGS:** 8" high legs standard, 1 5/8" tubing welded to steel plate and fastened to body support channels, Bullet-foot has 1 1/8" of adjustment, All legs are stainless steel

**BLOOMINGTON STYLE RAISED**

**RAIL - SANDWICH TOP:** NSF standard #7 compartment of 22 GA stainless steel 304-#2B finish, Mechanically-cooled, cold wall tank is controlled by its own pressure control with on/off switch, 3" Recessed openings can accommodate fractional-size pans up to 6" deep, Pans to sit on removable clip mounted to inside of tank with plastic thumb screws, Rail is tested to hold "product" temperature between 33-41 degrees Fahrenheit (*pans not included*)

**REFRIGERATION:** Self-contained unit has a high temperature balanced system using a hermetically sealed compressor, forced-air evaporator with protective-coated coil and expansion valve, System comes assembled with cord and 5-15P plug, Base tested to operate between 36 and 40 degrees F

**\*\*RAIL PERFORMANCE:**

CONDIMENTS MUST BE REMOVED AT NIGHT TO PREVENT FREEZING OF RAIL/PRODUCT, ON/OFF SWITCH IS PROVIDED IN FRONT PANEL TO CONTROL RAIL (ONLY)

ITEM # \_\_\_\_\_

PROJECT \_\_\_\_\_

DATE \_\_\_\_\_

MODEL	LENGTH
L-14138-B	38"
L-14150-B	50"
L-14156-B	56"
L-14162-B	62"
L-14168-B	68"
L-14174-B	74"
L-14180-B	80"
L-14186-B	86"
L-14192-B	92"
L-14198-B	98"
L-14104-B	104"
L-14110-B	112"

DEPTH  
28" OR 32"

**FEATURES**

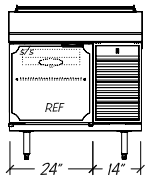
- 16 GA reinforced top
- Self-contained unit
- Self-closing doors
- Cold-wall construction
- 6" high flat raised rail top for fractional size pans (pans not incl)
- (1) Wire shelf per door
- Refrigeration system has expansion valve & temp. control for rapid recovery
- Uniform integration in design, quality and parts

**OPTIONS**

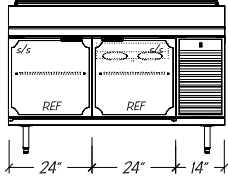
- Casters (specify working height)
- Custom Length Rails
- Drawers in lieu of doors
- Bun Pan Racks (pans by others)
- Cutting boards:  
11 1/2" or 13" (28"dp)  
15 1/2" or 17" (32"dp)

# Modular Equipment L-14000-B Series - Bloomington-Style Raised Rail

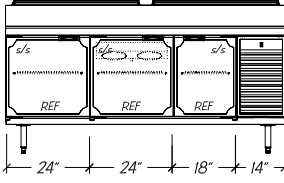
## DIMENSIONAL DATA



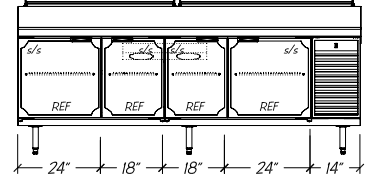
L-14138-B



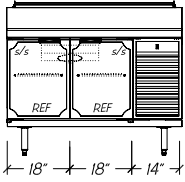
L-14162-B



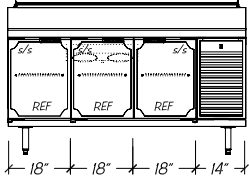
L-14180-B



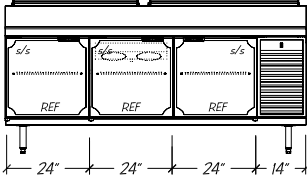
L-14198-B



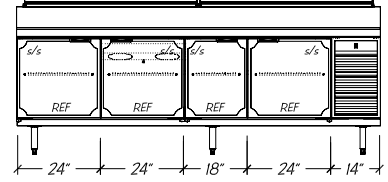
L-14150-B



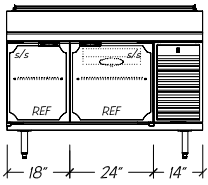
L-14168-B



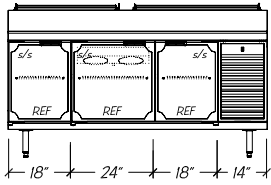
L-14186-B



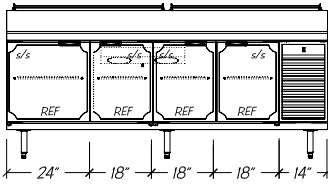
L-14104-B



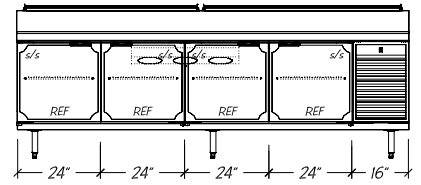
L-14156-B



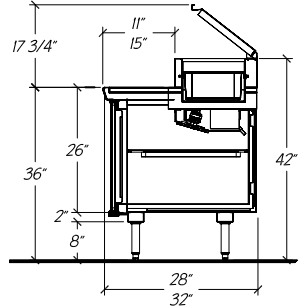
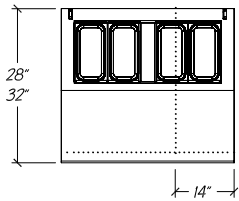
L-14174-B



L-14192-B



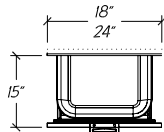
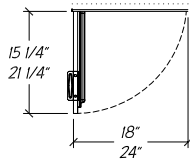
L-14110-B



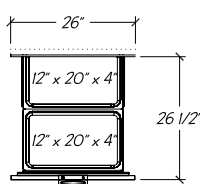
Standard Self-closing Doors

Optional Refrigerated Drawers

Optional 26" Refrigerated Drawers (adds 2" to unit length)



\*Drawers not available in front of rail



shown w/ optional full extension drawer slides

- Notes:**
- i. Compressor left available
  - ii. Pans not included
  - iii. Custom units may require modified BTU ratings and/or condensing unit HP
  - iv. Optional hot gas condensate evaporator is factory recommended, if electric evaporator is required, add 0.39 AMP to total

## STATISTICAL DATA

MODEL	LGTH	QTY 1/3 SIZE PANS <sup>ii</sup>	SHELVES PER UNIT	CONDENSING UNIT <sup>iii</sup>	VOLTS/ CYCLE/ PHASE	TOTAL AMPS <sup>iv</sup>	NEMA PLUG	SHIP WT.
L-14138-B	38"	4	1	1/4-HP R-134A	115v/60/1	7.75	5-15-P	375#
L-14150-B	50"	6	2	1/4-HP R-134A	115v/60/1	7.75	5-15-P	420#
L-14156-B	56"	7	2	1/4-HP R-134A	115v/60/1	7.75	5-15-P	460#
L-14162-B	62"	8	2	1/4-HP R-134A	115v/60/1	8.38	5-15-P	495#
L-14168-B	68"	9	3	1/4-HP R-134A	115v/60/1	8.38	5-15-P	530#
L-14174-B	74"	9	3	1/4-HP R-134A	115v/60/1	8.38	5-15-P	565#
L-14180-B	80"	10	3	1/4-HP R-134A	115v/60/1	8.38	5-15-P	605#
L-14186-B	86"	11	3	1/3-HP R-134A	115v/60/1	10.78	5-15-P	640#
L-14192-B	92"	12	4	1/3-HP R-134A	115v/60/1	10.78	5-15-P	665#
L-14198-B	98"	13	4	1/3-HP R-134A	115v/60/1	10.78	5-15-P	690#
L-14104-B	104"	14	4	1/3-HP R-134A	115v/60/1	10.78	5-15-P	710#
L-14110-B	112"	15	4	1/2-HP R-134A	115v/60/1	14.32	5-20-P	735#

## Modular Equipment 14000 Series MECHANICAL DATA

- Condensing unit wired to junction box 24" AFF, rear of condenser compartment is open for cord to exit 115V/60/1
- On/off switch 24" AFF with 8 foot cord and plug 5-15-P
- 5/8" OD copper drain for condensate evaporator 14 1/2" AFF
- On/off switch for rail

