

**Modular Equipment 15000-B Series**

**Bloomington-Style  
Raised Rail Top  
Remote Refrigerated Base**



L-15178-B shown with options (pans not included)

**SPECIFICATIONS:**

**TOP:** Die-formed construction of one-piece 16 GA stainless steel type 304-#4 finish with recessed 12 GA steel bars for reinforcement

**EXTERIOR:** Back, bottom, and sides of 20 GA steel with painted enamel finish, Body supported by 14 GA galvanized steel box channels for legs

**INTERIOR:** Bottom, Back, and Top of 22 GA stainless steel type 304-#2B finish, sides of one-piece high impact plastic

**DOOR JAMS:** One-piece high-impact plastic with concealed magnets on perimeter for positive sealing

**DOORS:** Exterior of one-piece die-stamped 22 GA stainless steel type 304-#4 finish, Interior of high-impact plastic, Gasket mounted w/ aluminum strips and screws for easy removability and to ensure a proper seal, Doors mounted on 12 GA spring-loaded self-closing hinges, Stainless handle with stamped grip

**SHELVES:** One, removable heavy-steel frame epoxy-coated shelf per door

**LEGS:** 8" high legs standard, 1 5/8" tubing welded to steel plate and fastened to body support channels, Bullet-foot has 1 1/8" of adjustment, All legs are stainless steel

**BLOOMINGTON STYLE RAISED**

**RAIL - SANDWICH TOP:** NSF standard #7 compartment of 22 GA stainless steel 304-#2B finish, Mechanically-cooled, cold wall tank is controlled by its own pressure control with on/off switch, 3" Recessed openings can accommodate fractional-size pans up to 6" deep, Pans to sit on removable clip mounted to inside of tank with plastic thumb screws, Rail is designed to hold "product" temperature between 33-41 degrees Fahrenheit (*pans not included*)

**REFRIGERATION:** Remote unit has a forced-air evaporator with protective-coated coil and expansion valve, System comes assembled with junction box ready for final connection, Base tested to operate between 36 and 40 degrees F

**\*\*RAIL PERFORMANCE:**

CONDIMENTS MUST BE REMOVED AT NIGHT TO PREVENT FREEZING OF RAIL/PRODUCT, ON/OFF SWITCH IS PROVIDED IN FRONT PANEL TO CONTROL RAIL (ONLY)

ITEM # \_\_\_\_\_

PROJECT \_\_\_\_\_

DATE \_\_\_\_\_

MODEL	LENGTH
L-15136-B	36"
L-15148-B	48"
L-15154-B	54"
L-15160-B	60"
L-15166-B	66"
L-15172-B	72"
L-15178-B	78"
L-15184-B	84"
L-15190-B	90"
L-15196-B	96"
L-15102-B	102"
L-15108-B	108"

DEPTH  
28" OR 32"

**FEATURES**

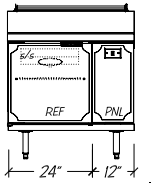
- 16 GA reinforced top
- Remote unit
- Self-closing doors
- Cold-wall construction
- 6" high flat raised rail top for fractional size pans (pans not incl)
- (1) Wire shelf per door
- Refrigeration system has expansion valve
- Uniform integration in design, quality and parts

**OPTIONS**

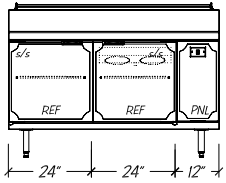
- Casters (specify working height)
- Custom Length Rails
- Drawers in lieu of doors
- Bun Pan Racks (pans by others)
- Solenoid valve & temp. control
- Cutting boards:  
11 1/2" or 13" (28"dp)  
15 1/2" or 17" (32"dp)

# Modular Equipment L-15000-B Series - Bloomington-Style Raised Rail

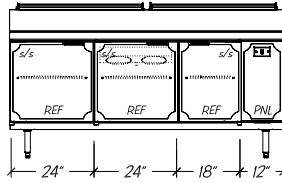
## DIMENSIONAL DATA



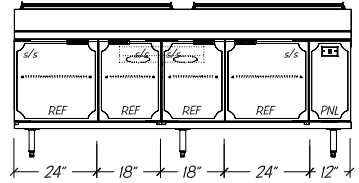
L-15136-B



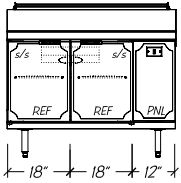
L-15160-B



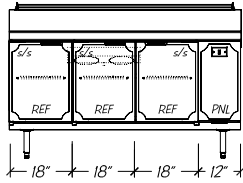
L-15178-B



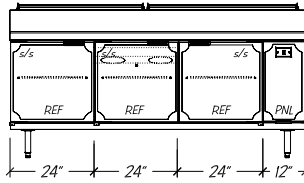
L-15196-B



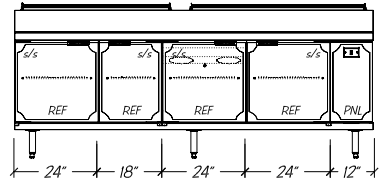
L-15148-B



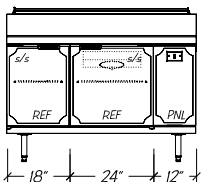
L-15166-B



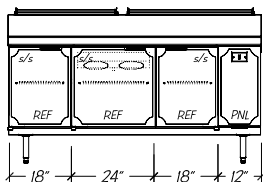
L-15184-B



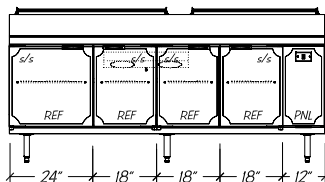
L-15102-B



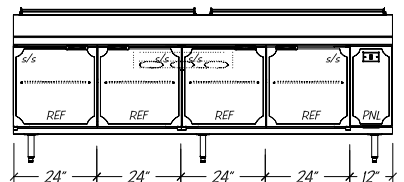
L-15154-B



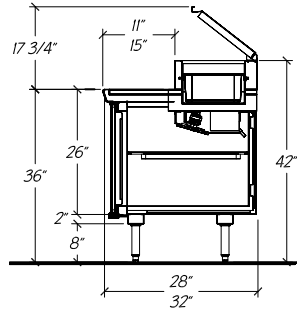
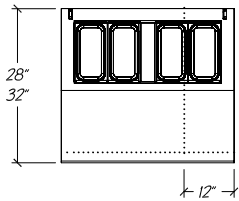
L-15172-B



L-15190-B



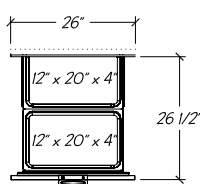
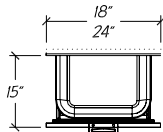
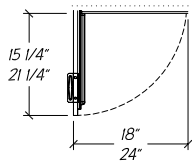
L-15108-B



Standard Self-closing Doors

Optional Refrigerated Drawers

Optional 26" Refrigerated Drawers (adds 2" to unit length)



Drawers not available in front of rail

shown w/ optional full extension drawer slides

### Notes:

- i. Control Housing Left available
- ii. Pans not included
- iii. Custom units may require modified BTU ratings and/or condensing unit HP
- iv. If electric evaporator is required, add 0.39 AMP to total

## STATISTICAL DATA

MODEL	LGTH	QTY 1/3 SIZE PANS <sup>ii</sup>	SHELVES PER UNIT	BTU/HR 10 TD <sup>iii</sup>		VOLTS/ CYCLE/ PHASE	TOTAL AMPS <sup>iv</sup>	REC. COMP. SIZE	SHIP WT.
				BASE	RAIL				
L-15136-B	36"	4	1	1000	1000	115v/60/1	0.64	1/4-HP	245#
L-15148-B	48"	6	2	1000	1000	115v/60/1	0.64	1/4-HP	320#
L-15154-B	54"	7	2	1000	1000	115v/60/1	0.64	1/4-HP	360#
L-15160-B	60"	8	2	1300	1300	115v/60/1	1.28	1/4-HP	395#
L-15166-B	66"	9	3	1300	1300	115v/60/1	1.28	1/4-HP	430#
L-15172-B	72"	9	3	1300	1300	115v/60/1	1.28	1/4-HP	465#
L-15178-B	78"	10	3	1300	1300	115v/60/1	1.28	1/4-HP	505#
L-15184-B	84"	11	3	1700	1700	115v/60/1	1.28	1/3-HP	540#
L-15190-B	90"	12	4	1700	1700	115v/60/1	1.28	1/3-HP	565#
L-15196-B	96"	13	4	1700	1700	115v/60/1	1.28	1/3-HP	590#
L-15102-B	102"	14	4	1700	1700	115v/60/1	1.28	1/3-HP	610#
L-15108-B	108"	15	4	2300	2300	115v/60/1	1.92	1/2-HP	635#

## Modular Equipment 15000 Series MECHANICAL DATA

- Junction Box 8" AFF hard-wired to coil
- 5/8" OD copper drain for condensate evaporator 8" AFF
- Refrigeration Lines, 1/4" inlet and 3/8" suction 8" AFF
- Centered between leg channels
- On/off switch for rail

