



L-21154 shown with options

SPECIFICATIONS:

TOP: Die-formed construction of one-piece 16 GA stainless steel type 304-#4 finish with 2 5/8" nosing, Backsplash to be 3/8" covered, 6" high x 2 1/8" wide, Sheared ends fitted with recessed 12 GA steel bars for adjoining units, producing a hairline seam

EXTERIOR: Back, bottom, and sides of 20 GA steel with painted enamel finish, Body supported by 14 GA galvanized steel box channels for legs

INTERIOR: Bottom and Back of 22 GA stainless steel type 304-#2B finish, sides of one-piece high impact plastic, Top of aluminum

DOOR JAMS: One-piece high-impact plastic with concealed magnets on perimeter for positive sealing, w/ door jam heaters to prevent gasket freezing

DOORS: Exterior of one-piece die-stamped 22 GA stainless steel type 304-#4 finish, Interior of high-impact plastic, Gasket mounted w/ aluminum strips and screws for easy removability and to ensure a proper seal, Doors mounted on 12 GA spring-loaded self-closing hinges, Stainless handle with stamped grip

SHELVES: One, removable heavy-steel frame epoxy-coated shelf per door

LEGS: 8" high legs standard, 1 5/8" tubing welded to steel plate and fastened to body support channels, Bullet-foot has 1 1/8" of adjustment, All legs are stainless steel

REFRIGERATION: Remote unit has a forced-air evaporator with protective-coated coil, expansion valve, defrost heater, and timer, System comes assembled with junction box for final field connection, Recommended temperature to operate between -5 and 0 degrees F

ITEM # _____
PROJECT _____

DATE _____

| MODEL | LENGTH |
|---------|--------|
| L-21130 | 30" |
| L-21142 | 42" |
| L-21148 | 48" |
| L-21154 | 54" |
| L-21160 | 60" |
| L-21166 | 66" |
| L-21172 | 72" |
| L-21178 | 78" |

DEPTH
23", 28" OR 32"

FEATURES

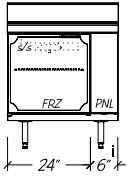
- Available with other modular equipment under one top up to 10 feet in length
- 16 GA reinforced top
- Remote unit
- Self-closing doors
- (1) Wire shelf per door
- Refrigeration system has expansion valve for rapid accurate recovery
- Uniform integration in design, quality and parts
- Includes defrost heaters, defrost timer

OPTIONS

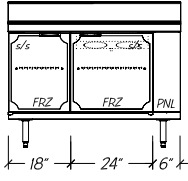
- Control Housing Left
- Drawers
- Custom Lengths

Modular Equipment L-21000 Series - S/S Work Top

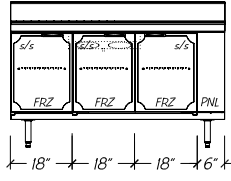
DIMENSIONAL DATA



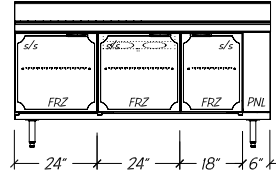
L-21130



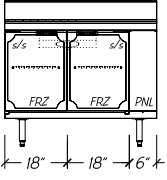
L-21148



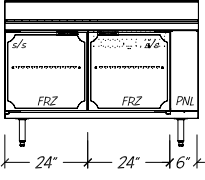
L-21160



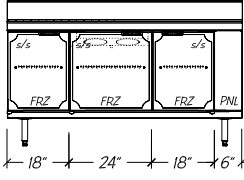
L-21172



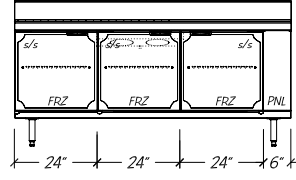
L-21142



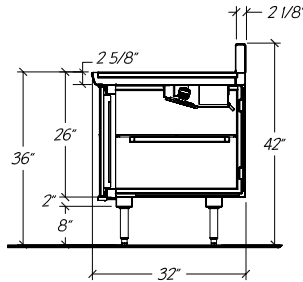
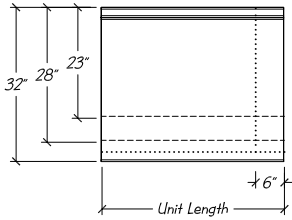
L-21154



L-21166



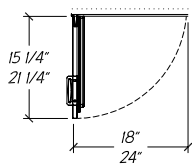
L-21178



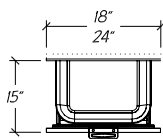
STATISTICAL DATA

| MODEL | LGTH | CAP. CU. FT. | | | SHELVING (SQ FT) | | | # PER UNIT | BTU PER HOUR 10 TD ii | VOLTS/ CYCLE/ PHASE | TOTAL AMPS iii | REC. HP | SHIP WT. |
|---------|------|--------------|------|------|------------------|------|------|------------|-----------------------|---------------------|----------------|---------|----------|
| | | 23" | 28" | 32" | 23" | 28" | 32" | | | | | | |
| L-21130 | 30" | 3.9 | 4.6 | 5.6 | 4.5 | 5.9 | 7.0 | 1 | 920 R-404 | 115v/60/1 | 5.28 | 1/4 | 375# |
| L-21142 | 42" | 5.8 | 7.8 | 9.4 | 7.3 | 9.5 | 11.3 | 2 | 920 R-404 | 115v/60/1 | 5.63 | 1/4 | 405# |
| L-21148 | 48" | 6.9 | 9.3 | 11.2 | 8.6 | 11.3 | 13.4 | 2 | 1,200 R-404 | 115v/60/1 | 7.52 | 1/3 | 445# |
| L-21154 | 54" | 8.1 | 10.9 | 13.1 | 10.0 | 13.1 | 15.5 | 2 | 1,200 R-404 | 115v/60/1 | 7.52 | 1/3 | 485# |
| L-21160 | 60" | 9.4 | 12.5 | 15.0 | 11.4 | 14.8 | 17.6 | 3 | 1,200 R-404 | 115v/60/1 | 7.78 | 1/3 | 515# |
| L-21166 | 66" | 10.6 | 14.1 | 16.9 | 12.7 | 16.6 | 19.7 | 3 | 1,600 R-404 | 115v/60/1 | 8.74 | 1/2 | 545# |
| L-21172 | 72" | 11.6 | 15.5 | 18.6 | 14.1 | 18.4 | 21.8 | 3 | 1,600 R-404 | 115v/60/1 | 8.74 | 1/2 | 580# |
| L-21178 | 78" | 12.8 | 17.1 | 20.5 | 15.5 | 20.2 | 24.0 | 3 | 1,600 R-404 | 115v/60/1 | 8.74 | 1/2 | 615# |

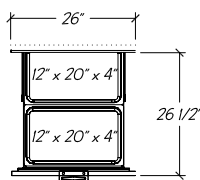
Standard Self-closing Doors



Optional Refrigerated Drawers



Optional 26" Refrigerated Drawers (adds 2" to unit length)



shown w/ optional full extension drawer slides

- Notes:**
- Control Panel left available
 - Custom units may require modified BTU ratings and/or condensing unit HP
 - Optional hot gas condensate evaporator is factory recommended, if electric evaporator is required, add 0.39 AMP to total

Modular Equipment 21000 Series MECHANICAL DATA

- Junction Box 8" AFF hard-wired to coil
- 5/8" OD copper drain for condensate evaporator 8" AFF
- Refrigeration Lines, 1/4" inlet and 3/8" suction 8" AFF
- Centered on refrigerated compartment
- Centered between leg channels
- Defrost timer 24" AFF hard-wired to J-box

