

Modular Equipment 31000 Series

Pie & Salad Display Cases 77" high

- Single Service

- Remote



CUSTOM-3148 shown with options

SPECIFICATIONS:

BASE TOP: Die-formed construction of one-piece 16 GA stainless steel type 304-#4 finish with 2 5/8" nosing, Sheared ends fitted with recessed 12 GA steel bars for adjoining units, producing a hairline seam

DISPLAY SINGLE SERVICE: Top & back of 20 GA steel with painted enamel finish, Exterior and interior sides of stainless steel, Sliding, insulated, tempered glass doors are self-closing, Fluorescent lights and display shelves included, Ducts provided in back wall for even air distribution, Acrylic mirrored back and 2 1/2" deep plastic pans included in base top

EXTERIOR: Back, bottom, and sides of 20 GA steel with painted enamel finish, Body supported by 14 GA galvanized steel box channels for legs

INTERIOR: Bottom and Back of 22 GA stainless steel type 304-#2B finish, sides of one-piece high impact plastic, Top of aluminum

DOOR JAMS: One-piece high-impact plastic with concealed magnets on perimeter for positive sealing

SHELVES: One, removable heavy-steel frame epoxy-coated shelf per door

DOORS: Exterior of one-piece die-stamped 22 GA stainless steel type 304-#4 finish, Interior of high-impact plastic, Gasket mounted w/ aluminum strips and screws for easy removability and to ensure a proper seal, Doors mounted on 12 GA spring-loaded self-closing hinges, Stainless handle with stamped grip

LEGS: 8" high legs standard, 1 5/8" tubing welded to steel plate and fastened to body support channels, Bullet-foot has 1 1/8" of adjustment, All legs are stainless steel

REFRIGERATION: Remote unit has a forced-air evaporator with protective-coated coil and expansion valve, System comes assembled with a junction box ready for final connection, Recommended temperature in base to operate between 36 and 40 degrees F, Display to operate between 37 and 41 degrees F

ITEM # _____

PROJECT _____

DATE _____

MODEL	LENGTH
CUSTOM-3148	48"
CUSTOM-3160	60"

DEPTH
28" OR 32"

FEATURES

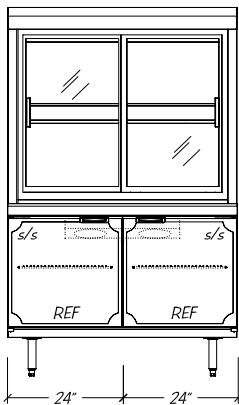
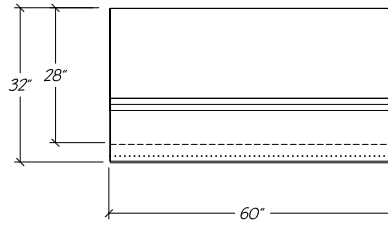
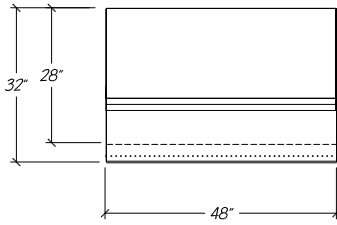
- Luminated display area
- Self-closing insulated glass doors
- Fractional pan display
- Duct system for cooling display area
- 16 GA reinforced top
- Remote unit
- Refrigeration system has expansion valve for rapid recovery
- Uniform integration in design, quality and parts

OPTIONS

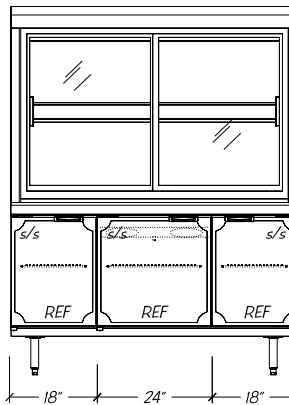
- S/S Ends
- Pass-Thru Style Display

Modular Equipment L-31000 Series - S/S Display Case

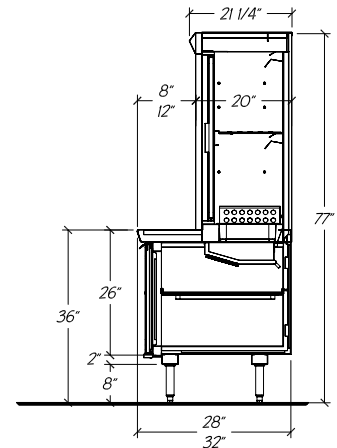
DIMENSIONAL DATA



CUSTOM-3148



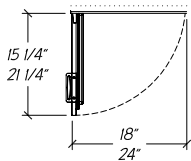
CUSTOM-3160



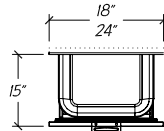
STATISTICAL DATA

MODEL	LGTH	CAP. CU. FT.			SHLVNG (SQ FT)			SHELVES PER UNIT ⁱ		BTU PER HOUR 10 TD	VOLTS/ CYCLE/ PHASE	TOTAL AMPS ⁱⁱ	REC COMP. SIZE	SHIP WT.
		DISP	28"	32"	DISP	28"	32"	DISP	BASE					
CUSTOM-3148	48"	6.4	10.7	12.9	13.5	13.1	15.1	4	2	1,700 R-134a	115v/60/1	1.28	1/3-HP	630#
CUSTOM-3160	60"	8.2	13.9	16.7	17.1	16.6	19.7	4	2	1,700 R-134a	115v/60/1	1.28	1/2-HP	705#

Standard Self-closing Doors



Optional Refrigerated Drawers ⁱⁱⁱ



- Notes:**
- Display comes with 1/2 size pans in place of stainless steel top shelf
 - Optional hot gas condensate evaporator is factory recommended, if electric evaporator is required, add 0.39 AMP to total
 - Available only on sections free from coil

Modular Equipment 31000 Series MECHANICAL DATA

- Junction Box 8" AFF hard-wired to coil
- D** 5/8" OD copper drain for condensate evaporator 8" AFF
- RL** Refrigeration Lines, 1/4" inlet and 3/8" suction 8" AFF
- A** Centered on refrigerated compartment
- C** Centered between leg channels

