

Modular Equipment 34000 Series

Pie & Salad Display Cases 52" high

- Single Service, Pass Over Style

- Self-contained



Custom-3450 shown with options

SPECIFICATIONS:

BASE TOP: Die-formed construction of one-piece 16 GA stainless steel type 304-#4 finish with 2 5/8" nosing, Sheared ends fitted with recessed 12 GA steel bars for adjoining units, producing a hairline seam

DISPLAY SINGLE SERVICE: Top & back of 20 GA steel with painted enamel finish, Exterior and interior sides of stainless steel, Sliding, insulated, tempered glass doors are self-closing, Fluorescent lights and display shelves included, Ducts provided in back wall for even air distribution, Acrylic mirrored back and 2 1/2" deep plastic pans included in base top

EXTERIOR: Back, bottom, and sides of 20 GA steel with painted enamel finish, Body supported by 14 GA galvanized steel box channels for legs

CONDENSER HOUSING: Fitted with a stainless steel snap-on louvered panel

INTERIOR: Bottom and Back of 22 GA stainless steel type 304-#2B finish, sides of one-piece high impact plastic, Top of aluminum

DOOR JAMS: One-piece high-impact plastic with concealed magnets on perimeter for positive sealing

SHELVES: One, removable heavy-steel frame epoxy-coated shelf per door

DOORS: Exterior of one-piece die-stamped 22 GA stainless steel type 304-#4 finish, Interior of high-impact plastic, Gasket mounted w/ aluminum strips and screws for easy removability and to ensure a proper seal, Doors mounted on 12 GA spring-loaded self-closing hinges, Stainless handle with stamped grip

LEGS: 8" high legs standard, 1 5/8" tubing welded to steel plate and fastened to body support channels, Bullet-foot has 1 1/8" of adjustment, All legs are stainless steel

REFRIGERATION: Self-contained unit has a high-temperature balanced system using a hermetically sealed condenser, Forced-air evaporator with protective-coated coil and expansion valve, System comes assembled with cord and 5-15-P plug, Base tested to operate between 36 and 40 degrees F, Display tested to operate between 37 and 41 degrees F

ITEM # _____

PROJECT _____

DATE _____

MODEL	LENGTH
CUSTOM-3450	50"
CUSTOM-3462	62"
CUSTOM-3474	74"

DEPTH
23", 28" OR 32"

FEATURES

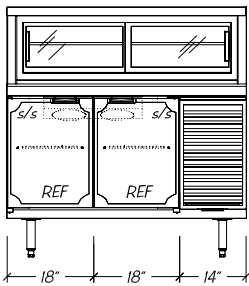
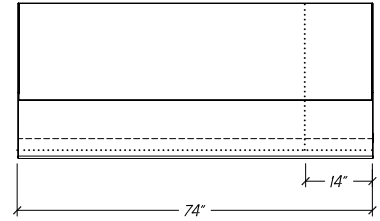
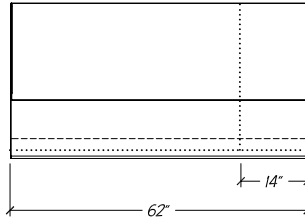
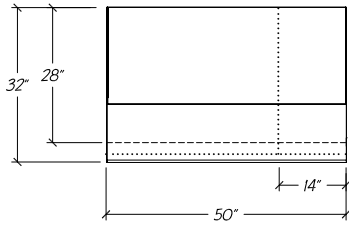
- Luminated display area
- Self-closing insulated glass doors
- Fractional pan display
- Duct system for cooling display area
- 16 GA reinforced top
- Self-contained unit
- Refrigeration system has expansion valve & temp. control for rapid recovery
- Uniform integration in design, quality and parts

OPTIONS

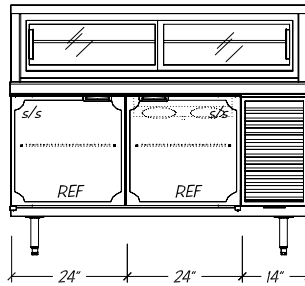
- S/S Ends
- Compressor Left

Modular Equipment L-34000 Series - Pass Over Display Case

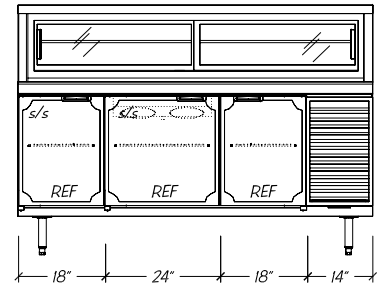
DIMENSIONAL DATA



CUSTOM-3450



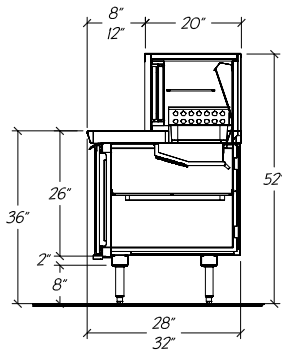
CUSTOM-3462



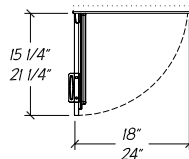
CUSTOM-3474

STATISTICAL DATA

MODEL	LGTH	CAP. CU. FT.			SHLVNG (SQ FT)			SHELVES PER UNIT ⁱⁱ		CONDENSING UNIT	VOLTS/CYCLE/PHASE	TOTAL AMPS ⁱⁱⁱ	NEMA PLUG	SHIP WT.
		DISP	28"	32"	DISP	28"	32"	DISP	BASE					
CUSTOM-3450	50"	2.5	7.5	9.3	6.1	9.5	11.3	1	2	1/4-HP R-134a	115v/60/1	8.38	5-15-P	630#
CUSTOM-3462	62"	3.2	10.7	12.9	7.8	13.1	15.5	1	2	1/4-HP R-134a	115v/60/1	8.38	5-15-P	675#
CUSTOM-3474	74"	3.9	13.9	17.8	9.4	16.6	19.7	1	3	1/3-HP R-134a	115v/60/1	10.78	5-15-P	735#



Standard Self-closing Doors



- Notes:
- Compressor left available
 - Display comes with 1/2 size pans in place of stainless steel top shelf
 - Optional hot gas condensate evaporator is factory recommended, if electric evaporator is required, add 0.39 AMP to total

Modular Equipment 34000 Series MECHANICAL DATA

C Condensing unit wired to junction box 24" AFF, rear of condenser compartment is open for cord to exit 115V/60/1

S On/off switch 24" AFF with 8 foot cord and plug 5-15-P

D 5/8" OD copper drain for condensate evaporator 14 1/2" AFF

