

Modular Equipment 35000 Series

Pie & Salad Display Cases 52" high

- Single Service, Pass Over Style

- Remote



Custom-3560 shown with options

SPECIFICATIONS:

BASE TOP: Die-formed construction of one-piece 16 GA stainless steel type 304-#4 finish with 2 5/8" nosing, Sheared ends fitted with recessed 12 GA steel bars for adjoining units, producing a hairline seam

DISPLAY SINGLE SERVICE: Top & back of 20 GA steel with painted enamel finish, Exterior and interior sides of stainless steel, Sliding, insulated, tempered glass doors are self-closing, Fluorescent lights and display shelves included, Ducts provided in back wall for even air distribution, Acrylic mirrored back and 2 1/2" deep plastic pans included in base top

EXTERIOR: Back, bottom, and sides of 20 GA steel with painted enamel finish, Body supported by 14 GA galvanized steel box channels for legs

INTERIOR: Bottom and Back of 22 GA stainless steel type 304-#2B finish, sides of one-piece high impact plastic, Top of aluminum

DOOR JAMS: One-piece high-impact plastic with concealed magnets on perimeter for positive sealing

SHELVES: One, removable heavy-steel frame epoxy-coated shelf per door

DOORS: Exterior of one-piece die-stamped 22 GA stainless steel type 304-#4 finish, Interior of high-impact plastic, Gasket mounted w/ aluminum strips and screws for easy removability and to ensure a proper seal, Doors mounted on 12 GA spring-loaded self-closing hinges, Stainless handle with stamped grip

LEGS: 8" high legs standard, 1 5/8" tubing welded to steel plate and fastened to body support channels, Bullet-foot has 1 1/8" of adjustment, All legs are stainless steel

REFRIGERATION: Remote unit has a forced-air evaporator with protective-coated coil and expansion valve, System comes assembled with junction box ready for final connection, Recommended temperature for base to operate between 36 and 40 degrees F, Display to operate between 37 and 41 degrees F

ITEM # _____

PROJECT _____

DATE _____

MODEL	LENGTH
CUSTOM-3548	48"
CUSTOM-3560	60"
CUSTOM-3572	72"

DEPTH
23", 28" OR 32"

FEATURES

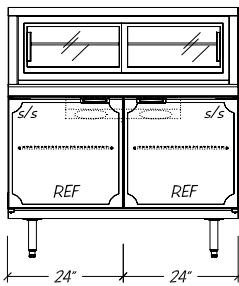
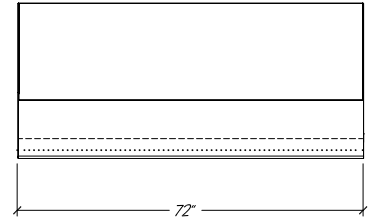
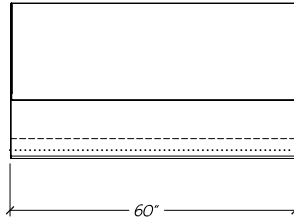
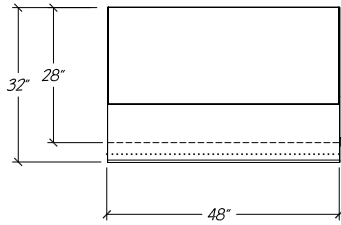
- Luminated display area
- Self-closing insulated glass doors
- Fractional pan display
- Duct system for cooling display area
- 16 GA reinforced top
- Remote unit
- Refrigeration system has expansion valve for rapid recovery
- Uniform integration in design, quality and parts

OPTIONS

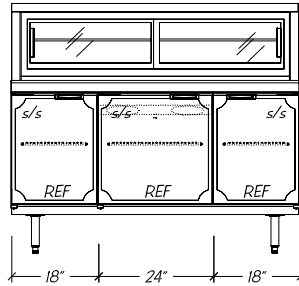
- S/S Ends

Modular Equipment L-35000 Series - Pass Over Display Case

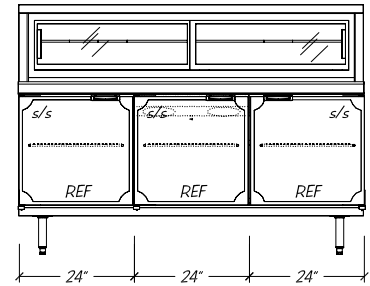
DIMENSIONAL DATA



CUSTOM-3548



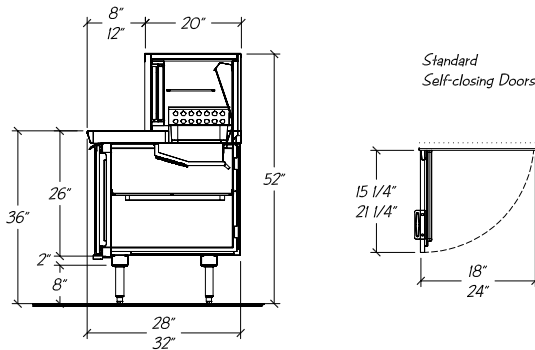
CUSTOM-3560



CUSTOM-3572

STATISTICAL DATA

MODEL	LGTH	CAP. CU. FT.			SHLVNG (SQ FT)			SHELVES PER UNIT ⁱⁱ		BTU PER HOUR 10 TD	VOLTS/CYCLE/PHASE	TOTAL AMPS ⁱⁱⁱ	REC. HP	SHIP WT.
		DISP	28"	32"	DISP	28"	32"	DISP	BASE					
CUSTOM-3548	48"	2.5	10.9	13.1	6.1	13.1	15.1	1	2	1,300 R-134a	115v/60/1	1.28	1/4	585#
CUSTOM-3560	60"	3.2	13.9	16.7	7.8	16.6	19.7	1	3	1,700 R-134a	115v/60/1	1.28	1/3	680#
CUSTOM-3572	72"	3.9	17.1	20.5	9.4	20.2	24.0	1	3	2,300 R-134a	115v/60/1	1.92	1/2	755#



- Notes:
- Display comes with 1/2 size pans in place of stainless steel top shelf
 - Optional hot gas condensate evaporator is factory recommended, if electric evaporator is required, add 0.39 AMP to total

Modular Equipment 35000 Series MECHANICAL DATA

- Junction Box 8" AFF hard-wired to coil
- 5/8" OD copper drain for condensate evaporator 8" AFF
- Refrigeration Lines, 1/4" inlet and 3/8" suction 8" AFF
- A** Centered on refrigerated compartment
- C** Centered between leg channels

