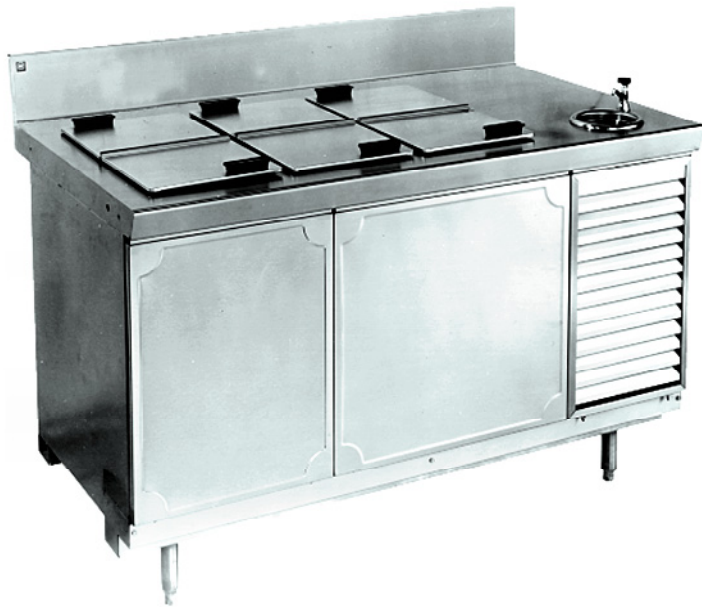


Modular Equipment 40000 Series

Ice Cream Cabinet - Stainless Steel Top

Self-contained



L-40156 shown with options

SPECIFICATIONS:

TOP: Die-formed construction of one-piece 16 GA stainless steel type 304-#4 finish with 2 5/8" nosing, Backsplash to be 3/8" covered, 6" high x 2 1/8" wide, Sheared ends fitted with recessed 12 GA steel bars for adjoining units, producing a hairline seam

OPENINGS: Die-formed raised, with high impact thermal breaker frames, Covers hinged in middle, insulated and removable, Openings will accommodate 3-gallon containers stacked 2 high

EXTERIOR: Back, bottom, and sides of 20 GA steel with painted enamel finish, Body supported by 14 GA galvanized steel box channels for legs

CONDENSER HOUSING: Fitted with a stainless steel snap-on louvered panel

INTERIOR: Compartment of 22 GA stainless steel type 304-#2B finish, Liner has cold wall type construction and maintains a temperature of -5 to 0 degrees F

INSULATION: Rigid Polyurethane Foam

FRONT: Exterior removable panels of one-piece die-stamped 22 GA stainless steel type 304-#4 finish

LEGS: 6" high legs, 1 5/8" tubing welded to steel plate and fastened to body support channels, Bullet-foot has 1 1/8" of adjustment, All legs are stainless steel

REFRIGERATION: Self-contained unit has a low-temperature balanced system using a hermetically sealed condenser, Expansion valve system with temperature control, System comes assembled with cord and 5-15-P plug, Base tested to operate between -5 and 0 degrees F

ITEM # _____

PROJECT _____

DATE _____

MODEL	LENGTH
L-40132	32"
L-40146	46"
L-40156	56"
L-40168	68"

DEPTH
28" OR 32"

FEATURES

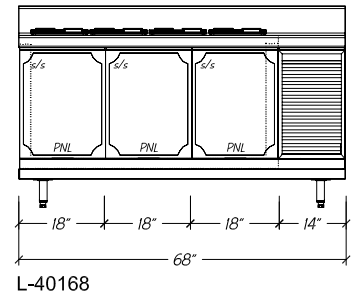
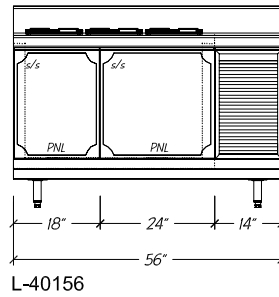
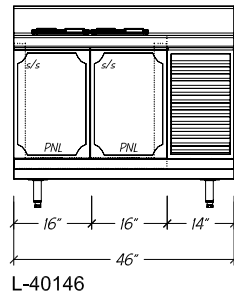
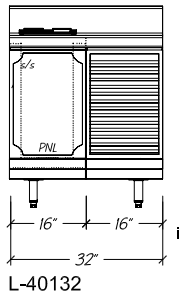
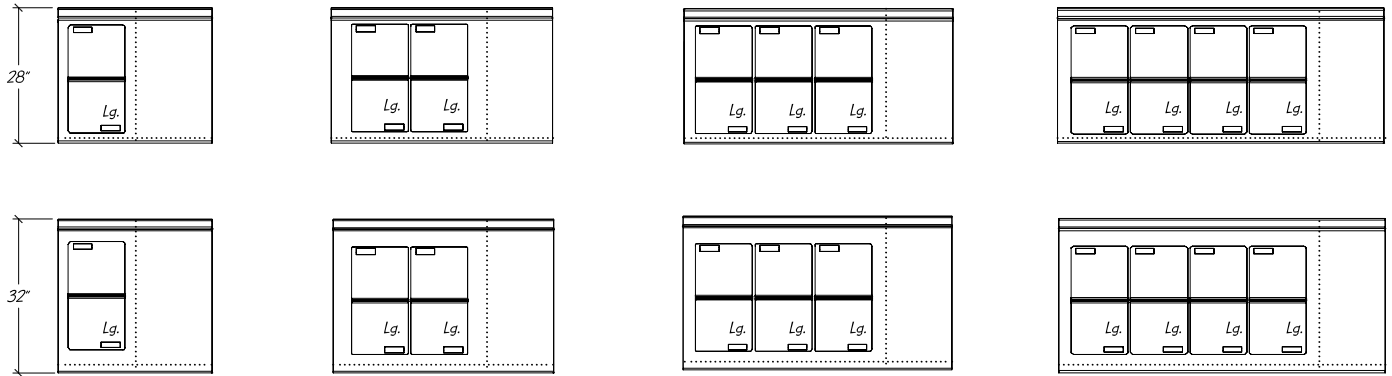
- 16 GA reinforced top
- Self-contained unit
- All Stainless Steel Interior lining with cold wall construction
- Refrigeration system has expansion valve & control for rapid recovery
- Uniform integration in design, quality and parts
- 3-gallon containers stack two high

OPTIONS

- Sink Unit
- Compressor Left
- Dipperwell

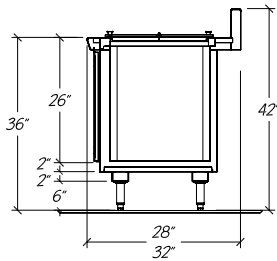
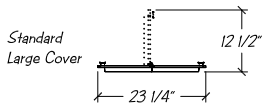
Modular Equipment L-40000 Series - Ice Cream Cabinets

DIMENSIONAL DATA

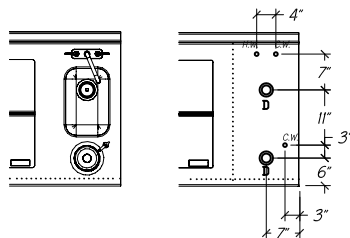


STATISTICAL DATA

MODEL	LGTH	# OF LIDS	GALLON CAPACITY		CONDENSING UNIT	VOLTS/CYCLE/PHASE	TOTAL AMPS	NEMA PLUG	SHIP WT.
			# OF 3 GAL. CONTAINERS	TOTAL GAL.					
L-40132	32"	1 lg	4	12	1/4-HP R-404A	115v/60/1	6.0	5-15-P	385#
L-40146	46"	2 lg	8	24	1/4-HP R-404A	115v/60/1	6.0	5-15-P	425#
L-40156	56"	3 lg	12	36	1/4-HP R-404A	115v/60/1	6.0	5-15-P	465#
L-40168	68"	4 lg	16	48	1/3-HP R-404A	115v/60/1	7.8	5-15-P	515#

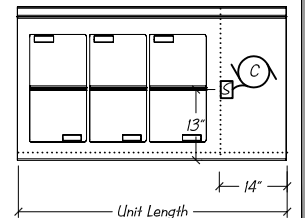


Optional Sink & Faucet and/or Dipper well w/ faucet ii



Modular Equipment 40000 Series MECHANICAL DATA

- Condensing unit wired to junction box 24" AFF, rear of condenser compartment is open for cord to exit 115V/60/1
- On/off switch 24" AFF with 8 foot cord and plug 5-15-P
- Water supply 1/2" NPS Male inlet w/ 1/4" NPT connection 34" A.F.F.
- 1 1/2" NPS Sink Drain



- Notes:**
- i. Compressor left available
 - ii. Optional sink unit and/or dipperwell w/ faucet available in compressor housing