



L-60160 shown with options

SPECIFICATIONS:

TOP: Die-formed construction of one-piece 16 GA stainless steel type 304-#4 finish with 2 5/8" nosing, Backsplash to be 3/8" coved, 6" high x 2 1/8" wide, Sheared ends fitted with recessed 12 GA steel bars for adjoining units, producing a hairline seam

INTERIOR: Ends of pan type construction, 22 GA stainless steel type 304-#4 finish, Top and body supported by 14 GA galvanized steel box channels, Sound deadening material applied between top of support channels and underside of top

EXTERIOR: Ends are unfinished painted side of stainless steel interior end, Back is open and painted, Full length natural chaseway for rough-in flexibility

SHELVES: Die-formed construction of one-piece bottom and intermediate shelf of 22 GA stainless steel typ 304-#4 finish, Front of undershelving has 1/4" high marine edge, Shelving has integral turn-up at rear, Intermediate shelf supported by 14 GA galvanized steel box channels, Bottom shelf supported by 20 GA galvanized steel box channels, Sound deadening material applied between top support channels and bottom of undershelving

LEGS: 8" high legs standard, 1 5/8" tubing welded to steel plate and fastened to body support channels, Bullet-foot has 1 1/8" of adjustment, All legs are stainless steel

ITEM # _____

PROJECT _____

DATE _____

MODEL	LENGTH
L-60112	12"
L-60118	18"
L-60124	24"
L-60130	30"
L-60136	36"
L-60142	42"
L-60148	48"
L-60160	60"
L-60172	72"
L-60184	84"
L-60196	96"

DEPTH
18", 23", 28" OR 32"

FEATURES

- Available with other modular equipment under one top up to 10 feet in length
- 16 GA reinforced top
- Interior ends and shelving of stainless steel
- 1" and fractional sizes available
- Uniform integration in design, quality and parts

OPTIONS

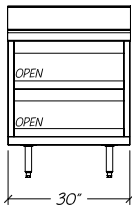
- Custom Sizes available
- Cut-outs for outlets, additional add-on options

Modular Equipment L-60000 Series - Utility Stands, Open Shelf

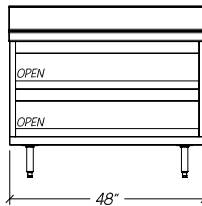
DIMENSIONAL DATA



L-60112



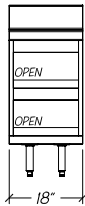
L-60130



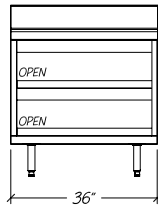
L-60148



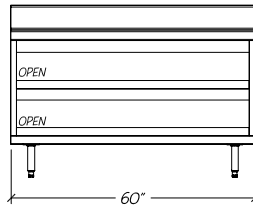
L-60184



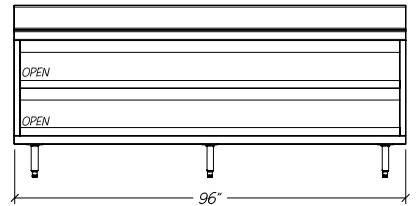
L-60118



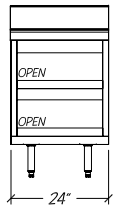
L-60136



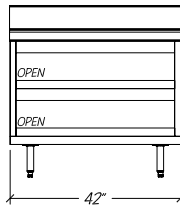
L-60160



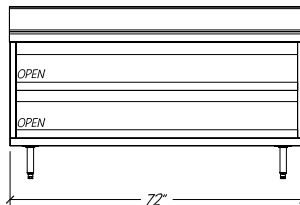
L-60196



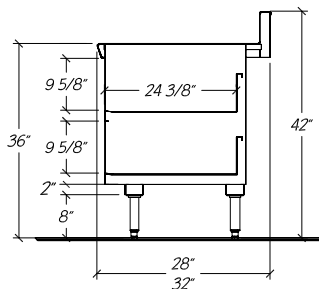
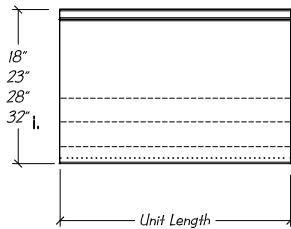
L-60124



L-60142



L-60172



- Notes:** i. 32" dp. equipment has 5 1/4" rear chaseway
18"-28" dp. equipment has 1 1/4" rear chaseway

STATISTICAL DATA

MODEL	LGTH	SHELVING (SQ FT)			SHIP WT.
		18"D	23"D	28" or 32"D	
L-60112	12"	1.9	2.6	3.4	110#
L-60118	18"	3.0	4.1	5.4	130#
L-60124	24"	3.9	5.4	7.1	170#
L-60130	30"	5.0	6.9	9.1	190#
L-60136	36"	6.1	8.4	11.2	210#
L-60142	42"	7.2	10.0	13.2	235#
L-60148	48"	8.4	11.5	15.2	255#
L-60160	60"	10.6	14.6	19.3	310#
L-60172	72"	12.8	17.6	23.4	360#
L-60184	84"	15.0	20.7	27.4	400#
L-60196	96"	17.3	23.7	31.5	460#

Modular Equipment 60000 Series MECHANICAL DATA

CO Optional 3 1/2" x 2" blank cut-out for outlet 39" AFF

F O Optional 1 1/2" Ferruled Hole 39" AFF

32" dp. unit has 5 1/4" rear chaseway
28" dp. unit has 1 1/4" rear chaseway
23" dp. unit has 1 1/4" rear chaseway
18" dp. unit has 1 1/4" rear chaseway

