

Modular Equipment 61000 Series

Utility Stands -
Open Shelf w/ Dry Drawer Base



L-61148 shown with options

SPECIFICATIONS:

TOP: Die-formed construction of one-piece 16 GA stainless steel type 304-#4 finish with 2 5/8" nosing, Backsplash to be 3/8" coved, 6" high x 2 1/8" wide, Sheared ends fitted with recessed 12 GA steel bars for adjoining units, producing a hairline seam

INTERIOR: Ends of pan type construction, 22 GA stainless steel type 304-#4 finish, Top and body supported by 14 GA galvanized steel box channels, Sound deadening material applied between top of support channels and underside of top

EXTERIOR: Ends are unfinished painted side of stainless steel interior end, Back is open and painted, Full length natural chaseway for rough-in flexibility

SHELF: Die-formed construction of one-piece intermediate shelf of 22 GA stainless steel typ 304-#4 finish, Front of undershelving has 1/4" high marine edge, Shelving has integral turn-up at rear and supported by 14 GA galvanized steel box channels, Sound deadening material applied between top support channels and bottom of undershelving

DRY DRAWER: Exterior front of one-piece die-stamped 22 GA stainless steel type 304-#4 finish, Drawer back and frame of 20 GA galvanized steel, Tracks of 16 GA galvanized steel and corrosion resistant 1 5/16" rollers with ball bearing assemblies, Removable drawer liner of high-impact plastic

LEGS: 8" high legs standard, 1 5/8" tubing welded to steel plate and fastened to body support channels, Bullet-foot has 1 1/8" of adjustment, All legs are stainless steel

ITEM # _____

PROJECT _____

DATE _____

MODEL	LENGTH
L-61118	18"
L-61124	24"
L-61136	36"
L-61142	42"
L-61148	48"
L-61154	54"
L-61160	60"
L-61172	72"
L-61184	84"
L-61196	96"

DEPTH
28" OR 32"

FEATURES

- Available with other modular equipment under one top up to 10 feet in length
- 16 GA reinforced top
- Interior ends and shelving of stainless steel
- Utility drawer of heavy duty tracks and roller bearings
- Removable Drawer Liner
- Uniform integration in design, quality and parts

OPTIONS

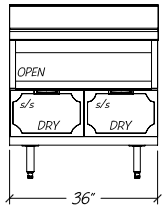
- Custom Sizes available
- Cut-outs for outlets, additional add-on options

Modular Equipment L-61000 Series - Utility Stands, Dry Drawer Base

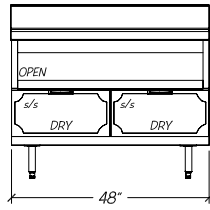
DIMENSIONAL DATA



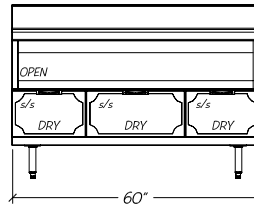
L-61118



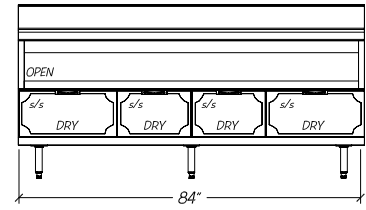
L-61136



L-61148



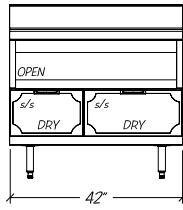
L-61160



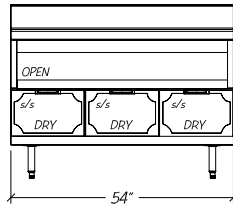
L-61184



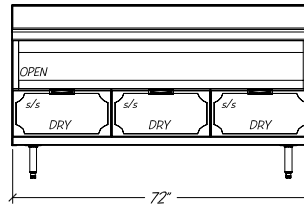
L-61124



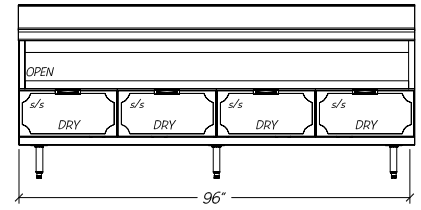
L-61142



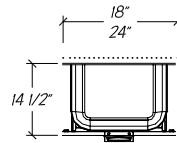
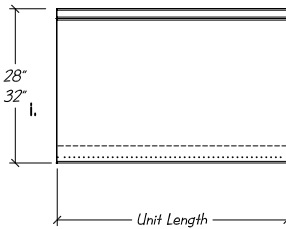
L-61154



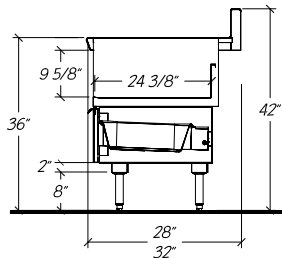
L-61172



L-61196



Standard Drawers



STATISTICAL DATA

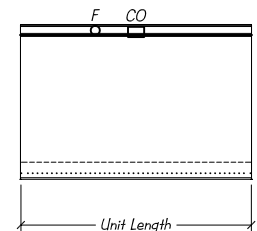
MODEL	LGTH	SHLVING (SQ FT) 28"/32"D	DRAWERS PER UNIT	DRAWER CAPACITY (CUB. FT)	SHIP WT.
L-61118	18"	2.7	1	1.0	155#
L-61124	24"	3.6	1	1.5	185#
L-61136	36"	5.6	2	2.0	240#
L-61142	42"	6.6	2	2.5	265#
L-61148	48"	7.6	2	3.0	290#
L-61154	54"	8.6	3	3.0	320#
L-61160	60"	9.6	3	3.5	350#
L-61172	72"	11.7	3	4.5	390#
L-61184	84"	13.7	4	5.0	420#
L-61196	96"	15.7	4	6.0	490#

Modular Equipment 61000 Series MECHANICAL DATA

CO Optional 3 1/2" x 2" blank cut-out for outlet 39" AFF

F O Optional 1 1/2" Ferruled Hole 39" AFF

32" dp. unit has 5 1/4" rear chaseway
28" dp. unit has 1 1/4" rear chaseway



- Notes: i. 32" dp. equipment has 5 1/4" rear chaseway
28" dp. equipment has 1 1/4" rear chaseway