

Modular Equipment 64000 Series

Utility Stands -
Coffee Urn Stand, Open Shelf



L-64142 shown with options

SPECIFICATIONS:

TOP: Die-formed construction of one-piece 16 GA stainless steel type 304-#4 finish with 2 5/8" nosing, Backsplash to be 3/8" coved, 6" high x 2 1/8" wide, Sheared ends fitted with recessed 12 GA steel bars for adjoining units, producing a hairline seam

BEVERAGE TROUGH: 4 1/4"W x 1 1/8"DP, 4" less unit length, 1/2" NPT drain and removable stainless steel drip plate included

INTERIOR: Ends of pan type construction, 22 GA stainless steel type 304-#4 finish, Top and body supported by 14 GA galvanized steel box channels, Sound deadening material applied between top of support channels and underside of top

EXTERIOR: Ends are unfinished painted side of stainless steel interior end, Back is open and painted, Full length natural chaseway for rough-in flexibility

SHELVES: Die-formed construction of one-piece bottom and intermediate shelf of 22 GA stainless steel typ 304-#4 finish, Front of undershelving has 1/4" high marine edge, Shelving has integral turn-up at rear, Intermediate shelf supported by 14 GA galvanized steel box channels, Bottom shelf supported by 20 GA galvanized steel box channels, Sound deadening material applied between top support channels and bottom of undershelving

LEGS: 8" high legs standard, 1 5/8" tubing welded to steel plate and fastened to body support channels, Bullet-foot has 1 1/8" of adjustment, All legs are stainless steel

ITEM # _____

PROJECT _____

DATE _____

MODEL	LENGTH
L-64124	24"
L-64130	30"
L-64136	36"
L-64142	42"
L-64148	48"
L-64154	54"
L-64160	60"
L-64172	72"
L-64184	84"
L-64196	96"

DEPTH
28" OR 32"

FEATURES

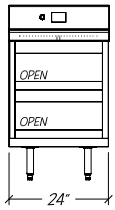
- Available with other modular equipment under one top up to 10 feet in length
- 16 GA reinforced top
- Drain Trough w/ removable grate and drain
- Interior ends and shelving of stainless steel
- Uniform integration in design, quality and parts

OPTIONS

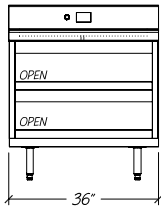
- Custom Sizes available
- Cut-outs for outlets, additional add-on options

Modular Equipment L-64000 Series - Utility Stands, Coffee Urn Stand

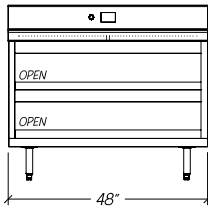
DIMENSIONAL DATA



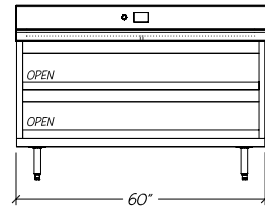
L-64124



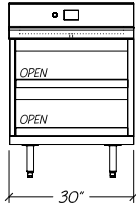
L-64136



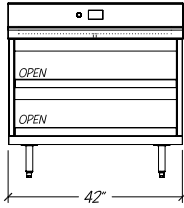
L-64148



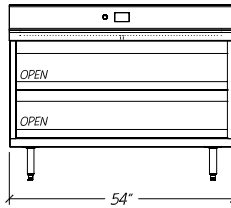
L-64160



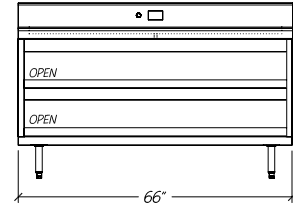
L-64130



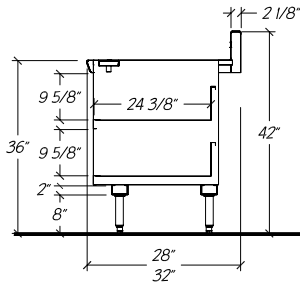
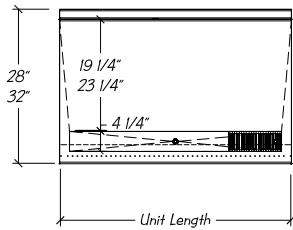
L-64142



L-64154



L-64166



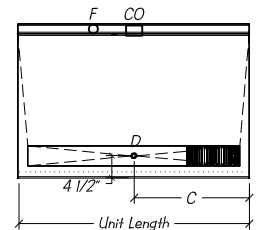
- Notes:** i. 32" dp. equipment has 5 1/4" rear chaseway
28" dp. equipment has 1 1/4" rear chaseway

STATISTICAL DATA

MODEL	LGTH	SHELVING (SQ FT)	SHIP WT.
		28"D / 32"D	
L-64124	24"	7.1	170#
L-64130	30"	9.1	195#
L-64136	36"	11.2	215#
L-64142	42"	13.2	240#
L-64148	48"	15.2	260#
L-64154	54"	17.3	290#
L-64160	60"	19.3	315#
L-64166	66"	21.3	335#

Modular Equipment 64000 Series MECHANICAL DATA

- Optional 3 1/2" x 2" blank cut-out for outlet 39" AFF
- Optional 1 1/2" Ferruled Hole 39" AFF
- Trough Drain 1/2" s/s tubing 33 1/2" AFF
- Centered over unit length



- 32" dp. unit has 5 1/4" rear chaseway
- 28" dp. unit has 1 1/4" rear chaseway