

**Modular Equipment 65000 Series**

Utility Stands -  
Coffee Urn Stand, Bottom Drawer Base



L-65148 shown with options

**SPECIFICATIONS:**

**TOP:** Die-formed construction of one-piece 16 GA stainless steel type 304-#4 finish with 2 5/8" nosing, Backsplash to be 3/8" coved, 6" high x 2 1/8" wide, Sheared ends fitted with recessed 12 GA steel bars for adjoining units, producing a hairline seam

**BEVERAGE TROUGH:** 4 1/4"W x 1 1/8"DP, 4" less unit length, 1/2" NPT drain and removable stainless steel drip plate included

**INTERIOR:** Ends of pan type construction, 22 GA stainless steel type 304-#4 finish, Top and body supported by 14 GA galvanized steel box channels, Sound deadening material applied between top of support channels and underside of top

**EXTERIOR:** Ends are unfinished painted side of stainless steel interior end, Back is open and painted, Full length natural chaseway for rough-in flexibility

**DRY DRAWER:** Exterior front of one-piece die-stamped 22 GA stainless steel type 304-#4 finish, Drawer back and frame of 20 GA galvanized steel, Tracks of 16 GA galvanized steel and corrosion resistant 1 5/16" rollers with ball bearing assemblies, Removable drawer liner of high-impact plastic

**SHELF:** Die-formed construction of one-piece intermediate shelf of 22 GA stainless steel typ 304-#4 finish, Front of undershelfing has 1/4" high marine edge, Shelving has integral turn-up at rear, Intermediate shelf supported by 14 GA galvanized steel box channels, Sound deadening material applied between top support channels and bottom of undershelfing

**LEGS:** 8" high legs standard, 1 5/8" tubing welded to steel plate and fastened to body support channels, Bullet-foot has 1 1/8" of adjustment, All legs are stainless steel

ITEM # \_\_\_\_\_

PROJECT \_\_\_\_\_

DATE \_\_\_\_\_

MODEL	LENGTH
L-65124	24"
L-65136	36"
L-65142	42"
L-65148	48"
L-65154	54"
L-65160	60"
L-65172	72"
L-65184	84"
L-65196	96"

DEPTH  
28" OR 32"

**FEATURES**

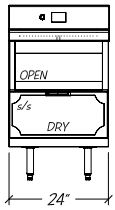
- Available with other modular equipment under one top up to 10 feet in length
- 16 GA reinforced top
- Drain Trough w/ removable grate and drain
- Interior ends and shelving of stainless steel
- Utility drawer of heavy duty tracks and roller bearings
- Removable Drawer Liner
- Uniform integration in design, quality and parts

**OPTIONS**

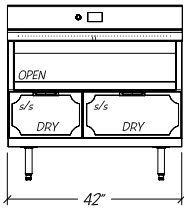
- Custom Sizes available
- Cut-outs for outlets, additional add-on options

# Modular Equipment L-65000 Series - Coffee Urn Stand, Drawer Base

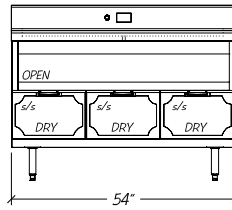
## DIMENSIONAL DATA



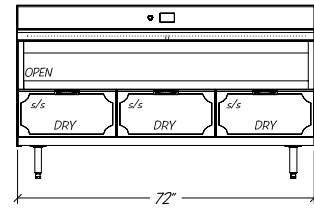
L-65124



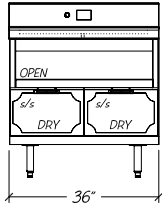
L-65142



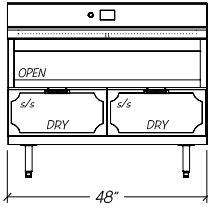
L-65154



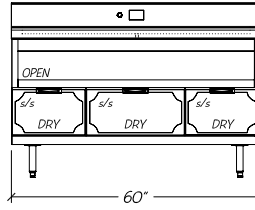
L-65172



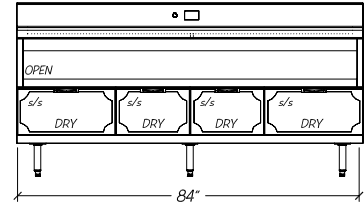
L-65136



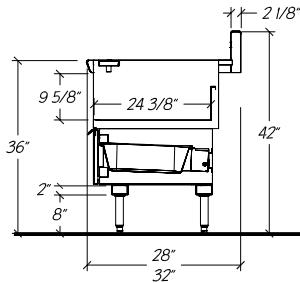
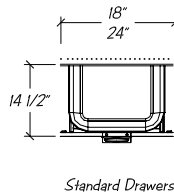
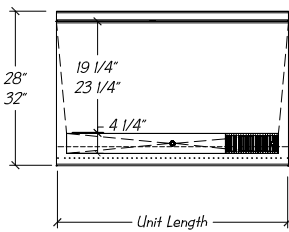
L-65148



L-65160



L-65184

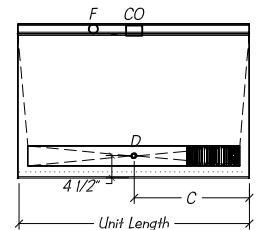


### STATISTICAL DATA

MODEL	LGTH	SHELVING (SQ FT) 28"D / 32"D	DRAWERS PER UNIT	DRAWER CAPACITY (CUB. FT)	SHIP WT.
L-65124	24"	3.6	1	1.5	185#
L-65136	36"	5.6	2	2.0	245#
L-65142	42"	6.6	2	2.5	265#
L-65148	48"	7.6	2	3.0	295#
L-65154	54"	8.6	3	3.0	325#
L-65160	60"	9.6	3	3.5	355#
L-65172	72"	11.7	3	4.5	395#
L-65184	84"	13.7	4	5.0	425#
L-65196	96"	15.7	4	6.0	495#

### Modular Equipment 65000 Series MECHANICAL DATA

- CO Optional 3 1/2" x 2" blank cut-out for outlet 39" AFF
- F Optional 1 1/2" Ferruled Hole 39" AFF
- D Trough Drain 1/2" s/s tubing 33 1/2" AFF
- C Centered over unit length



32" dp. unit has 5 1/4" rear chaseway  
28" dp. unit has 1 1/4" rear chaseway

- Notes: i. 32" dp. equipment has 5 1/4" rear chaseway  
28" dp. equipment has 1 1/4" rear chaseway