

Modular Equipment 7000 Series

Equipment Stands -
Open Shelf Base



L-70142 shown with options

SPECIFICATIONS:

EQUIPMENT SHELF: Die-formed construction of one-piece 20/22 GA stainless steel type 304-#4 finish, Front of shelf has 1/4" high marine edge, turn-up at rear with cutouts for utility lines, Back extends up and includes a 2 1/8" wide backsplash, Equipment support rails are removable and include adjustable bullet feet, stainless steel plate, and 1 1/8" of adjustment

INTERIOR: Ends of pan type construction, 22 GA stainless steel type 304-#4 finish 1 1/2" thick, Shelf and body supported by 14 GA galvanized steel box channels, Sound deadening material applied between top of support channels and underside of equipment shelf

EXTERIOR: Ends are unfinished painted side of stainless steel interior end, Back is open and painted, Full length natural chaseway for rough-in flexibility

CUTTING BOARD: (Unit Length) x 9 1/2" WIDE x 1/2" THICK NSF approved Richlite board with stainless steel reinforcement channel, Drop-leaf brackets or removable rod supports provided

SHELF: Open shelf of 22 GA stainless steel typ 304-#4 finish, Front of undershelfing has 1/4" high marine edge, Shelving has integral turn-up at rear, Intermediate shelf supported by 14 GA galvanized steel box channels, Bottom shelf supported by 20 GA galvanized steel box channels, Sound deadening material applied between top support channels and bottom of undershelfing

LEGS: 8" high legs standard, 1 5/8" tubing welded to steel plate and fastened to body support channels, Bullet-foot has 1 1/8" of adjustment, All legs are stainless steel

ITEM # _____

PROJECT _____

DATE _____

MODEL	LENGTH
L-70136	36"
L-70142	42"
L-70148	48"
L-70154	54"
L-70160	60"
L-70172	72"
L-70184	84"
L-70196	96"
L-70108	108"
L-70120	120"

DEPTH
26 1/2" OR 30 1/2"

FEATURES

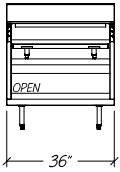
- Adjustable equipment supports
- Utility knockouts provided
- Richlite cutting board
- Interior ends and shelving of stainless steel
- 1" and fractional sizes available
- Uniform integration in design, quality and parts

OPTIONS

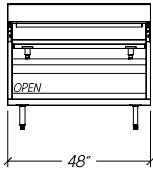
- Custom Sizes available
- Cut-outs for outlets, additional add-on options

Modular Equipment L-70000 Series - Equipment Stands, Open Shelf

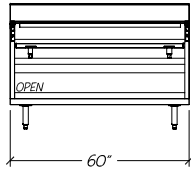
DIMENSIONAL DATA



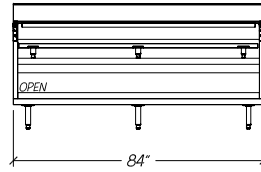
L-70136



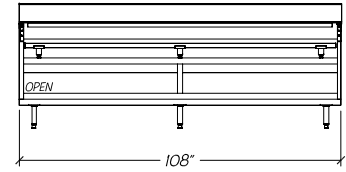
L-70148



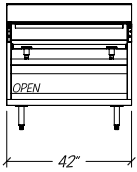
L-70160



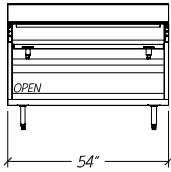
L-70184



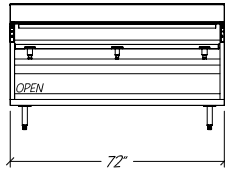
L-70108



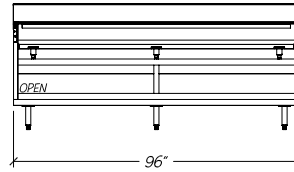
L-70142



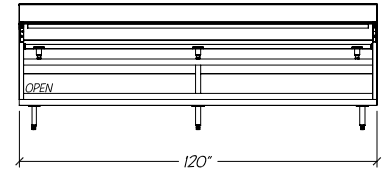
L-70154



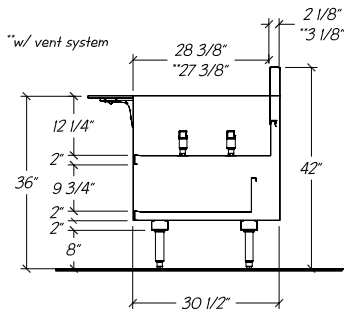
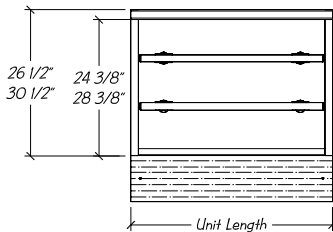
L-70172



L-70196



L-70120



STATISTICAL DATA

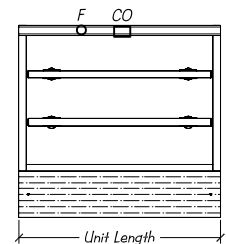
MODEL	LGTH i.	SHELVING (SQ FT) 26 1/2" or 30 1/2"D	SHIP WT.
L-70136	36"	5.6	215#
L-70142	42"	6.6	240#
L-70148	48"	7.6	260#
L-70154	54"	8.6	290#
L-70160	60"	9.6	315#
L-70172	72"	11.6	350#
L-70184	84"	13.7	395#
L-70196	96"	15.7	410#
L-70108	108"	17.8	475#
L-70120	120"	19.8	575#

Modular Equipment 70000 Series MECHANICAL DATA

CO Optional 3 1/2" x 2" blank cut-out
for outlet 25" AFF

F
O Optional 1 1/2" Ferruled Hole 25" AFF

30 1/2" dp. unit has 5 1/4" rear chaseway
26 1/2" dp. unit has 1 1/4" rear chaseway



Notes: i. Allow 4" for equipment clearance and side thickness