

Modular Equipment 71000 Series

Equipment Stands -
Dry Drawer Base



L-71142 shown with options

SPECIFICATIONS:

EQUIPMENT SHELF: Die-formed construction of one-piece 20/22 GA stainless steel type 304-#4 finish, Front of shelf has 1/4" high marine edge, turn-up at rear with cutouts for utility lines, Back extends up and includes a 2 1/8" wide backsplash, Equipment support rails are removable and include adjustable bullet feet, stainless steel plate, and 1 1/8" of adjustment

INTERIOR: Ends of pan type construction, 22 GA stainless steel type 304-#4 finish 1 1/2" thick, Shelf and body supported by 14 GA galvanized steel box channels, Sound deadening material applied between top of support channels and underside of equipment shelf

EXTERIOR: Ends are unfinished painted side of stainless steel interior end, Back is open and painted, Full length natural chaseway for rough-in flexibility

CUTTING BOARD: (Unit Length) x 9 1/2" WIDE x 1/2" THICK NSF approved Richlite board with stainless steel reinforcement channel, Drop-leaf brackets or removable rod supports provided

DRY DRAWER: Exterior front of one-piece die-stamped 22 GA stainless steel type 304-#4 finish, Drawer back and frame of 20 GA galvanized steel, Tracks of 16 GA galvanized steel and corrosion resistant 1 5/16" rollers with ball bearing assemblies, Removable drawer liner of high-impact plastic

SHELF: Open shelf of 22 GA stainless steel typ 304-#4 finish, Front of undershelfing has 1/4" high marine edge, Shelving has integral turn-up at rear, Intermediate shelf supported by 14 GA galvanized steel box channels, Bottom shelf supported by 20 GA galvanized steel box channels, Sound deadening material applied between top support channels and bottom of undershelfing

LEGS: 8" high legs standard, 1 5/8" tubing welded to steel plate and fastened to body support channels, Bullet-foot has 1 1/8" of adjustment, All legs are stainless steel

ITEM # _____

PROJECT _____

DATE _____

| MODEL | LENGTH |
|---------|--------|
| L-71136 | 36" |
| L-71142 | 42" |
| L-71148 | 48" |
| L-71154 | 54" |
| L-71160 | 60" |
| L-71172 | 72" |
| L-71184 | 84" |
| L-71196 | 96" |
| L-71108 | 108" |
| L-71120 | 120" |

DEPTH
26 1/2" OR 30 1/2"

FEATURES

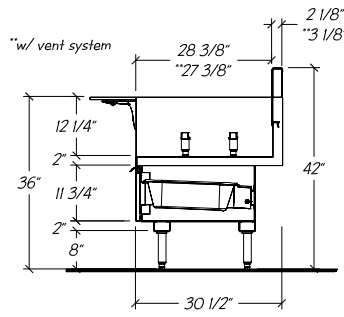
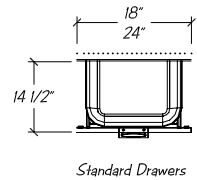
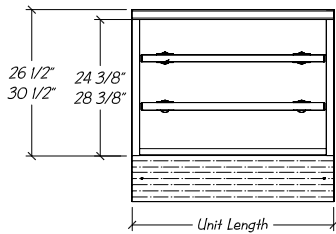
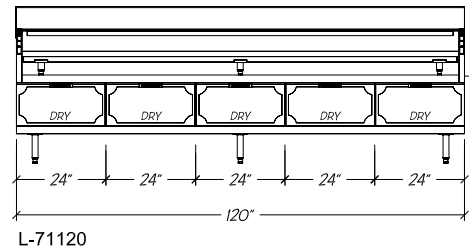
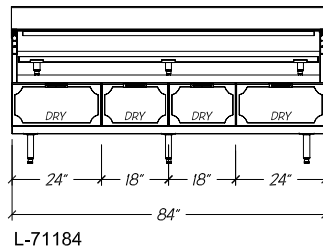
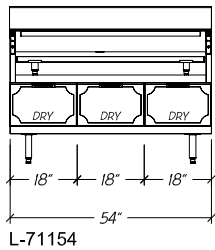
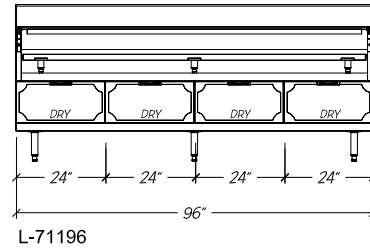
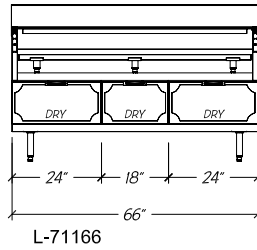
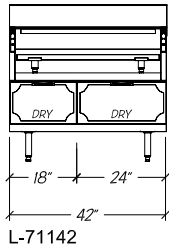
- Adjustable equipment supports
- Utility knockouts provided
- Drawers with heavy duty tracks and roller bearings
- Richlite cutting board
- Interior ends and shelving of stainless steel
- 1" and fractional sizes available
- Uniform integration in design, quality and parts

OPTIONS

- Custom Sizes available
- Cut-outs for outlets, additional add-on options

Modular Equipment L-71000 Series - Equipment Stands, Open Shelf

DIMENSIONAL DATA



STATISTICAL DATA

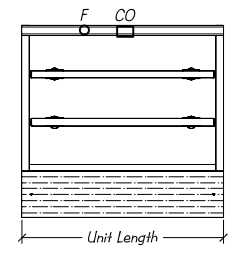
| MODEL | LGTH i. | SHELVING (SQ FT) 26 1/2" or 30 1/2"D | DRWRS PER UNIT | DRWR CAP. (CU FT) | SHIP WT. |
|---------|------------|---|----------------------|-------------------------|-------------|
| L-71136 | 36" | 5.6 | 2 | 1.1 | 295# |
| L-71142 | 42" | 6.6 | 2 | 1.4 | 310# |
| L-71148 | 48" | 7.6 | 2 | 1.6 | 325# |
| L-71154 | 54" | 8.6 | 3 | 1.6 | 340# |
| L-71160 | 60" | 9.6 | 3 | 1.9 | 350# |
| L-71172 | 72" | 11.6 | 3 | 2.5 | 385# |
| L-71184 | 84" | 13.7 | 4 | 2.7 | 435# |
| L-71196 | 96" | 15.7 | 4 | 3.3 | 485# |
| L-71108 | 108" | 17.8 | 5 | 3.6 | 525# |
| L-71120 | 120" | 19.8 | 5 | 4.2 | 625# |

Modular Equipment 71000 Series MECHANICAL DATA

CO Optional 3 1/2" x 2" blank cut-out for outlet 25" AFF

F O Optional 1 1/2" Ferruled Hole 25" AFF

30 1/2" dp. unit has 5 1/4" rear chaseway
26 1/2" dp. unit has 1 1/4" rear chaseway



Notes: i. Allow 4" for equipment clearance and side thickness