

L-73150 shown with options

SPECIFICATIONS:

EQUIPMENT SHELF: Die-formed construction of 20 GA stainless steel type 304-#4 finish, Reinforced by 14 GA galvanized steel box channels, Back and ends extend up 1 1/2"

EXTERIOR: Ends of pan type construction, 22 GA stainless steel type 304-#4 finish, Body supported by 14 GA galvanized steel box channels, Sound deadening material applied between support channels and top

SHELF: Bottom of 22 GA stainless steel typ 304-#4 finish and includes integral turn-up at rear, Shelf supported by 20 GA galvanized steel box channels, Sound deadening material applied between top support channels and shelf

CASTERS: 6 1/4" high, 5" DIA swivel casters with steel plate, fastened to body support channel, Front casters to have brake mechanisms

ITEM # _____

PROJECT _____

DATE _____

MODEL	LENGTH
L-73138	38"
L-73150	50"
L-73162	62"
L-73174	74"
L-73186	86"
L-73198	98"
L-73110	110"
L-73116	116"

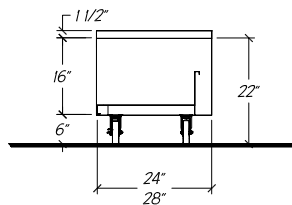
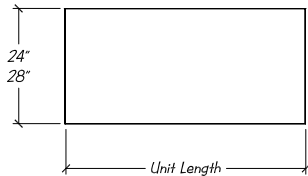
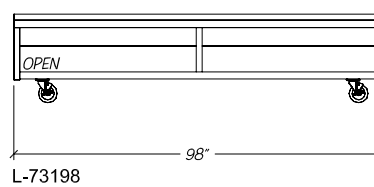
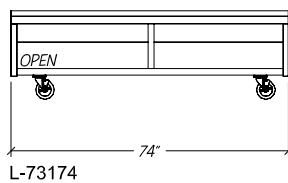
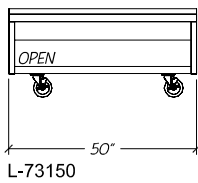
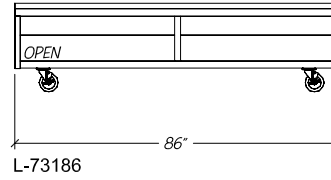
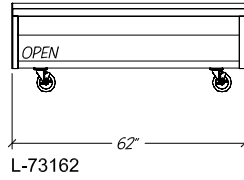
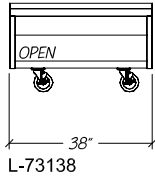
DEPTH
24" OR 28"

FEATURES

- Reinforced stainless steel top
- Top has 1 1/2" turn-up on back and ends
- Stainless steel reinforced shelf
- Swivel Casters, (2) w/ locks
- 1" and fractional sizes available
- Uniform integration in design, quality and parts

Modular Equipment L-73000 Series - Equipment Stands, Portable Base

DIMENSIONAL DATA



STATISTICAL DATA			
MODEL	LGTH	SHLVING SQ. FT.	SHIP WT.
L-73138	38"	5.8	175#
L-73150	50"	7.8	225#
L-73162	62"	9.8	275#
L-73174	74"	11.8	325#
L-73186	86"	13.8	350#
L-73198	98"	15.8	380#
L-73110	110"	17.8	430#
L-73116	116"	18.8	455#