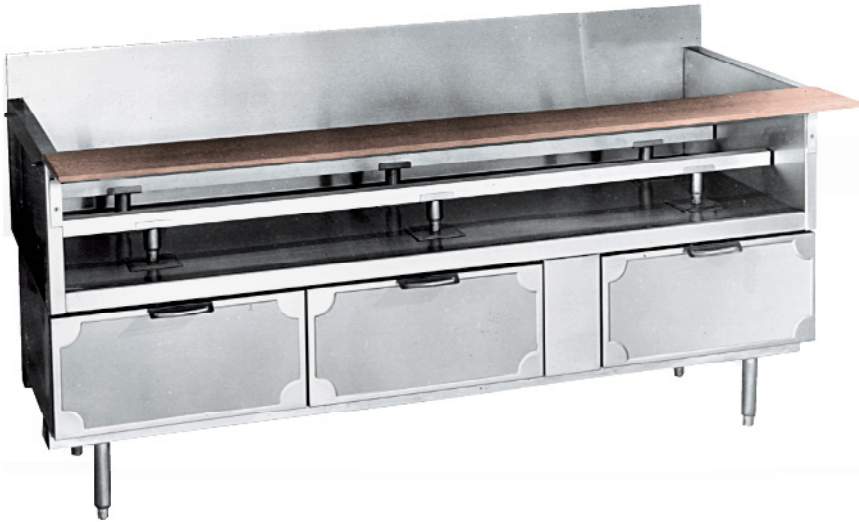


**Modular Equipment 75000 Series**

Equipment Stands - Refrigerated Base  
Remote



L-75178 shown with options

**SPECIFICATIONS:**

**EQUIPMENT SHELF:** Die-formed construction of one-piece 20/22 GA stainless steel type 304-#4 finish, Front of shelf has 1/4" high marine edge, turn-up at rear with cutouts for utility lines, Back extends up and includes a 2 1/8" wide backsplash, Equipment support rails are removable and include adjustable bullet feet, stainless steel plate, and 1 1/8" of adjustment

**TOP INTERIOR:** Ends of pan type construction, 22 GA stainless steel type 304-#4 finish 1 1/2" thick, Shelf and body supported by 14 GA galvanized steel box channels, Sound deadening material applied between top of support channels and underside of equipment shelf

**CUTTING BOARD:** (Unit Length) x 9 1/2" WIDE x 1/2" THICK NSF approved Richlite board with stainless steel reinforcement channel, Drop-leaf brackets or removable rod supports provided

**EXTERIOR:** Back, bottom, and sides of 20 GA steel with painted enamel finish, Body supported by 14 GA galvanized steel box channels for legs

**CONDENSER HOUSING:** Fitted with a stainless steel snap-on louvered panel

**BASE INTERIOR:** Bottom and Back of 22 GA stainless steel type 304-#2B finish, sides of one-piece high impact plastic, Top of aluminum

**INSULATION:** Rigid Polyurethane Foam

**DRAWER JAMS:** One-piece high-impact plastic with concealed magnets on perimeter for positive sealing

**DRAWERS:** Exterior of one-piece die-stamped 22 GA stainless steel type 304-#4 finish, Interior of high-impact plastic, Gasket mounted w/ aluminum strips and screws for easy removability and to ensure a proper seal, Drawer frame of combination 20 GA and 16 GA stainless steel and corrosion resistant 1 5/16" rollers w/ ball bearing assembly, Each drawer includes removable drawer liner of high impact plastic material

**LEGS:** 8" high legs standard, 1 5/8" tubing welded to steel plate and fastened to body support channels, Bullet-foot has 1 1/8" of adjustment, All legs are stainless steel

**REFRIGERATION:** Remote unit has a forced-air evaporator with protective-coated coil and expansion valve, System comes assembled with junction box ready for final connection, Recommended temperature to operate between 36 and 40 degrees F (condenser and control not included)

ITEM # \_\_\_\_\_

PROJECT \_\_\_\_\_

DATE \_\_\_\_\_

MODEL	LENGTH
L-75142	42"
L-75148	48"
L-75154	54"
L-75160	60"
L-75166	66"
L-75172	72"
L-75178	78"
L-75184	84"
L-75190	90"
L-75196	96"
L-75102	102"
L-75108	108"

DEPTH

26 1/2" OR 30 1/2"

**FEATURES**

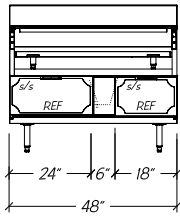
- Adjustable equipment supports
- Richlite cutting board
- Interior ends and shelving of stainless steel
- Remote unit
- Refrigeration system has expansion valve for rapid recovery
- Uniform integration in design, quality and parts

**OPTIONS**

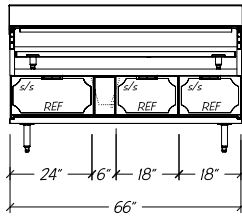
- Custom Sizes available

# Modular Equipment L-75000 Series - Refrigerated Equipment Stands

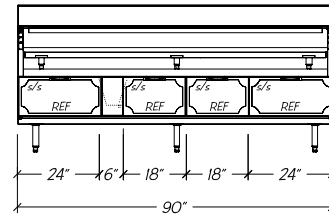
## DIMENSIONAL DATA



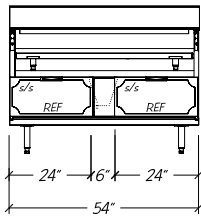
L-75148



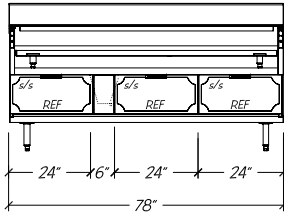
L-75166



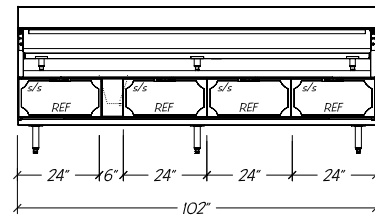
L-75190



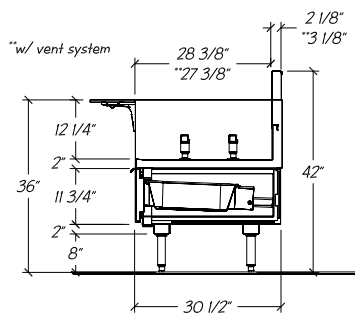
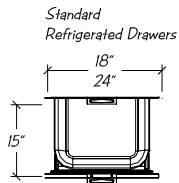
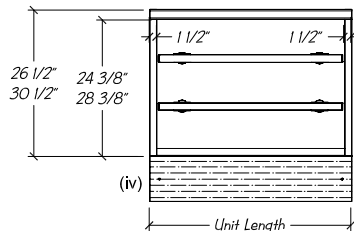
L-75154



L-75178



L-75102



- Notes:**
- Custom units may require modified BTU ratings and/or condensing unit HP
  - Optional hot gas condensate evaporator is factory recommended, if electric evaporator is required, add 0.39 AMP to total
  - 30 1/2" deep equipment has 4" rear chase, 26 1/2" equipment has no chase
  - Allow 4" for equipment clearance and side thickness

## STATISTICAL DATA

MODEL	LGTH	REF. DRAWERS		BTU PER HR 10 TD (60 HZ) <sub>i</sub>	VOLTS/ CYCLE/ PHASE	TOTAL AMPS <sub>ii</sub>	REC. COMP	SHIP WT.
		CAPACITY (CU. FT.)	# PER UNT					
L-75142	42"	1.1	2	800 R-134A	115v/60/1	.64	1/4	340#
L-75148	48"	1.4	2	800 R-134A	115v/60/1	.64	1/4	375#
L-75154	54"	1.6	2	800 R-134A	115v/60/1	.64	1/4	410#
L-75160	60"	1.6	3	800 R-134A	115v/60/1	.64	1/4	430#
L-75166	66"	1.9	3	800 R-134A	115v/60/1	.64	1/4	445#
L-75172	72"	2.2	3	1200 R-134A	115v/60/1	1.28	1/4	460#
L-75178	78"	2.5	3	1200 R-134A	115v/60/1	1.28	1/4	475#
L-75184	84"	2.5	4	1200 R-134A	115v/60/1	1.28	1/4	510#
L-75190	90"	2.7	4	1200 R-134A	115v/60/1	1.28	1/4	545#
L-75196	96"	3.1	4	1200 R-134A	115v/60/1	1.28	1/4	600#
L-75102	102"	3.3	4	1200 R-134A	115v/60/1	1.28	1/4	655#

## Modular Equipment 75000 Series MECHANICAL DATA

- Junction Box 8" AFF hard-wired to coil
- 5/8" OD copper drain for condensate evaporator 8" AFF
- Refrigeration Lines, 1/4" inlet and 3/8" suction 8" AFF
- Centered on refrigerated compartment
- Centered between leg channels

