



L-83128 shown with options

**SPECIFICATIONS:**

**TOP:** Die-formed construction of one-piece 16 GA stainless steel type 304-#4 finish with 2 5/8" nosing, Backsplash to be 3/8" coved, 6" high x 2 1/8" wide w/ ferruled holes for steam ventilation, Sheared ends fitted with recessed 12 GA steel bars for adjoining units, producing a hairline seam

**BUN WARMER:** Die-formed double-wall water tank, Integrally-welded construction of 16 GA stainless steel type 304-#4 finish, Interior is 21 1/4"L x 19"W x 13 3/4"D, Interior top perimeter includes condensate trough with drain tube, Stainless steel divider and (2) removable false bottoms included, Two 3/4" NPT drains with gate valves, one for inner tank and the other for outer water jacket, Two stainless steel covers hinged-up for access to each compartment, Lids to set in the condensate trough, Stainless steel water-jacket fill tube provided at rear and includes fill faucet

**GAS HEAT:** 22,000 BTU/HR natural gas ring-burner, Pilot light with safety shut-off and common manifold included, LP available upon request

**ELECTRIC HEAT:** 3 KW strip heaters mounted to external outer tank with heat shield, Thermostat with positive off position and pilot light

**ACCESS PANEL:** Removable 20 GA stainless steel type 304-#4 finish

**EXTERIOR:** Ends are the unfinished painted side of the stainless steel interior end, Back is unfinished, open, and painted for full length chaseway and rough-in flexibility

**LEGS:** 8" high legs standard, 1 5/8" tubing welded to steel plate and fastened to body support channels, Bullet-foot has 1 1/8" of adjustment, All legs are stainless steel

ITEM # \_\_\_\_\_

PROJECT \_\_\_\_\_

DATE \_\_\_\_\_

MODEL	LENGTH
L-83128	28"
L-84128	28"

DEPTH  
28" OR 32"

**FEATURES**

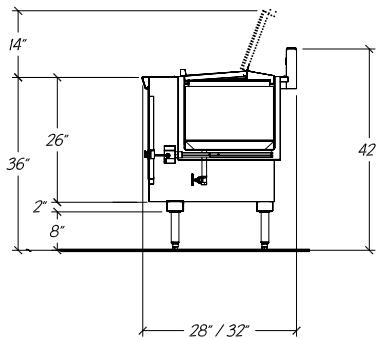
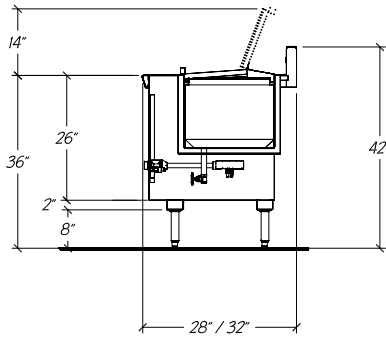
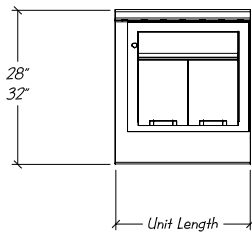
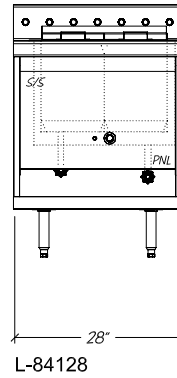
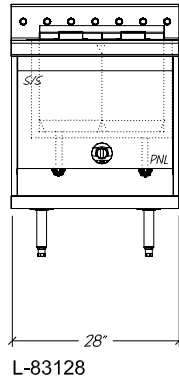
- Available with other modular equipment under one top up to 10 feet in length
- 16 GA reinforced top
- Inner tank can be wet or dry
- Two hinged covers and divider provides two compartments
- Gas or Electric available
- Uniform integration in design, quality and parts

**OPTIONS**

- Custom Sizes
- Sight glass
- Roll-Top Covers

# Modular Equipment L-83/84000 Series - Bun Steamer, Gas or Electric

## DIMENSIONAL DATA



STATISTICAL DATA								
MODEL	LGTH	BURNERS	BTUS	# OF HEATERS	HEATER AMPERAGE			SHIP WT.
					120V	208V	240V	
L-83128	28"	1	22000	-	-	-	-	295#
L-84128	28"	-	-	1	12.5	5.4	6.3	295#

**Modular Equipment 83/84000 Series MECHANICAL DATA**

- ☐ Junction Box hard-wired to warmer, 22" AFF (84000 only)
- GC 1/2" FPT Gas connection, 16" AFF (83000 only)
- HW Water supply 1/2" NPS Male inlet w/ 1/4" NPT connection, 34" AFF
- D 1" copper drain FPT w/ gate valve, 15" AFF

32" dp. unit has 5 1/4" rear chaseway  
28" dp. unit has 1 1/4" rear chaseway

- Notes:**
- i. 32" deep equipment has 5 1/4" chaseway at rear
  - ii. 28" deep equipment has 1 1/4" chaseway at rear
  - iii. Specify depth and voltage
  - iv. All heating elements are single phase
  - v. Burners rated at 22,000 BTU's each with pilot and safety valve