



BLG-48HD



BLG SERIES

Bottom Mounted Low Temp Glass Door Merchandisers

MODELS

- ☐ BLG-27HD ☐ BLG-74HD
☐ BLG-48HD ☐ BLG-80HD
☐ BLG-52HD



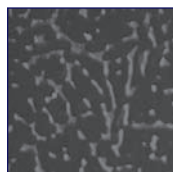
These ENERGY STAR[®] qualified models feature highly efficient compressors, generously-sized condensers and evaporators and EC evaporator motors. They may also qualify for energy rebate programs.

FEATURES

NEW STANDARD TEXTURED FINISH



Standard white



Black also available

CONSTRUCTION

- Standard electronic controller with these features:
 - Ability to monitor defrost functions from the front panel interface
 - Audible and visual alarm
 - Eliminates room thermostat, defrost termination/fan delay control, defrost timer and digital thermometer or other temperature indicator
- 24 gauge painted textured galvanized steel interior and exterior
- Anti-sweat heaters on doors and on cabinet face
- Single cord and plug standard on all self-contained models

- Equipped with high output T8HO lamps and electronic ballasts for greater energy efficiency
- Five white epoxy-coated, heavy-duty welded wire shelves with price tag molding per door (four cantilever and one bottom)
- Cantilever shelves are two-position and adjustable in 1" increments
- Independent on/off switch
- 2" foamed-in-place "zero ODP" urethane insulation

DOORS

- Auto-close, triple pane, heated safety glass doors with heated frames
- 90° hold-open feature
- Door size:
 - BLG-27HD29¹/₄" x 61¹/₄"
 - BLG-48HD/74HD.....24³/₈" x 61¹/₄"
 - BLG-52HD/80HD.....26³/₈" x 61¹/₄"
- Black door rails and handles
- Adjustable torsion bar hinges
- Replaceable magnetic vinyl door gaskets
- Door hinges easily adjustable for closing tension and leveling

REFRIGERATION

- Refrigerant: R-404A
- Self-contained, bottom mounted,

- factory tested refrigeration system
- Top mounted, low profile interior fan housing
- Automatic condensate evaporator
- Minimum 6" clearance required between cabinet back and wall
- Temperature range: 5° to -15°F (-18° to -26°C)
- R-factor (insulation efficiency rating): 17.24

WARRANTY

- Standard limited three year extended compressor and two year limited parts and labor

OPTIONS

- ☐ Add suffix "R" for remote system (For BLG-48 and BLG-74 only)
- ☐ Custom exterior colors
- ☐ Baskets
- ☐ Casters
- ☐ Legs
- ☐ Additional shelves
- ☐ Voltage boosting transformer



BLG SERIES

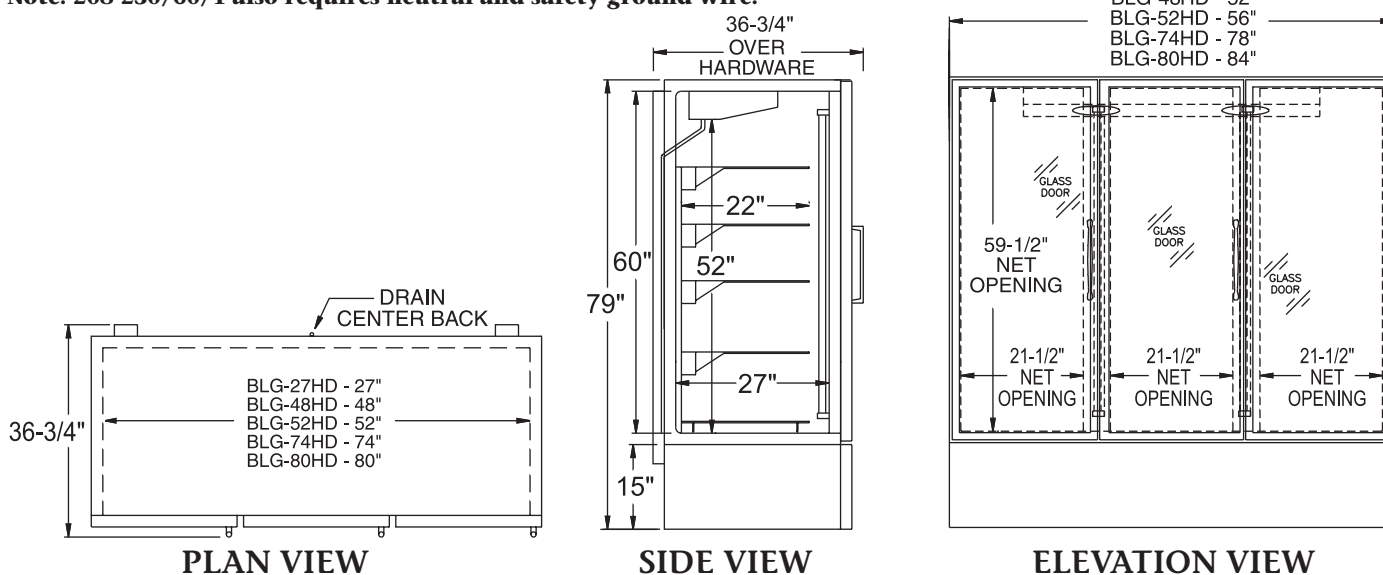
BOTTOM MOUNTED LOW TEMP GLASS DOOR MERCHANDISERS

TECHNICAL SPECIFICATIONS

MODEL	DIMENSIONS (in.)			DIMENSIONS (mm)			VOLTS*	AMPS	UNIT H.P.	NO. OF DOORS	CAP. CU. FT.	SHIP CU. FT.	SHIP WT. (LB/KG)
	L	D	H	L	D	H							
BLG-27HD	31	36 ³ / ₄	79	787	933	2007	115	13.7	3/4	1	27.5	79.0	630/286
BLG-48HD	52	36 ³ / ₄	79	1321	933	2007	208-230	10.6	1 ¹ / ₂	2	49.0	117.0	880/400
BLG-52HD	56	36 ³ / ₄	79	1422	933	2007	208-230	10.6	1 ¹ / ₂	2	53.0	128.0	890/405
BLG-74HD	78	36 ³ / ₄	79	1981	933	2007	208-230	11.1	2	3	75.5	168.0	1105/502
BLG-80HD	84	36 ³ / ₄	79	2134	933	2007	208-230	11.1	2	3	81.6	185.0	1165/530

*BLG models (except BLG-27HD) operate on a minimum of 208 volts. A voltage boosting transformer (part no. 39-01087) must be used when the supply voltage is less than 208 volts.

Note: 208-230/60/1 also requires neutral and safety ground wire.



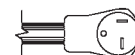
LISTINGS



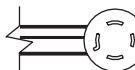
HOOKUP

BLG-27HD: Via plug in, 9 foot long flexible three wire 14/3 cord with molded plug.

Other models: Via plug in, 9 foot long flexible four wire 208-230v 14/4 cord with neutral and ground wires and molded plug.



NEMA 5-20P (BLG-27HD)



NEMA L14-20P (BLG-48HD, -52HD, -74HD and -80HD)

BID SPECIFICATIONS

Item no. BLG-_____
Provide _____ () Bottom Mounted Low Temp Glass Door Merchandiser(s), Master-Bilt model no. BLG-_____.

Merchandiser will feature textured finish on interior and exterior and will be equipped with an electronically controlled monitoring system. It will also be provided with adjustable torsion bar hinges, heated

frames and door openings, top mounted low profile interior fan housing, automatic condensate evaporator, five white epoxy-coated shelves (four cantilever and one bottom) with price tag molding per door, energy efficient T8HO lamps, independent on/off light switch, black door rails and handles and triple pane glass.

The refrigeration system is to be bottom

mounted, self-contained and use R-404A refrigerant. The temperature range will be 5° to -15°F (-15° to -26°C).

Merchandiser to have standard limited three year extended compressor warranty and two year limited parts and labor warranty. Merchandiser to be UL, C-UL and NSF listed as well as ENERGY STAR qualified.

NOTE: Cabinet designed for optimum performance in air-conditioned area at 75°F ambient and 55% relative humidity. All specifications subject to change without notice.



908 Highway 15 North • New Albany, MS 38652

PHONE: 800-647-1284 or 662-534-9061 • FAX: 800-232-3966 or 662-534-6049 • www.master-bilt.com

