



BMOA-48



## BMOA SERIES

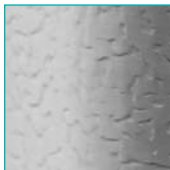
### Bottom Mounted Medium Temp Open Display Merchandisers

#### MODELS

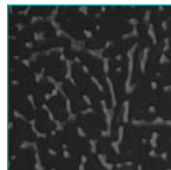
- BMOA-36
- BMOA-48
- BMOA-74

### FEATURES

#### STANDARD TEXTURED FINISH



Standard white



Black also available

- 2" foamed-in-place "zero ODP" urethane insulation
- Standard LED lighting
- Shelves adjustable in 1" increments
- Three lighted tiers of two-position shelving with price tag molding
- Perforated interior back wall for better air flow
- Off-cycle defrost
- Easily accessible electrical enclosure
- Steel floor pans removable for easy service access

#### WARRANTY

- Standard limited three year extended compressor and two year limited parts and labor

#### CONSTRUCTION

- Standard electronic controller with these features:
  - Ability to monitor defrost functions from the front panel interface
  - Audible and visual alarm
  - Eliminates room thermostat, defrost termination/fan delay control, defrost timer and digital thermometer or other temperature indicator
- 24 gauge galvanized painted textured steel exterior and interior

#### REFRIGERATION

- Refrigerant: R-404A
- Front air intake and rear air discharge
- Self-contained, bottom mount refrigeration system
- Temp. range: 34° to 41°F (1° to 5°C)
- R-factor (insulation efficiency rating): 17.24
- **Drain plumbing hookup recommended. Condensate pan available if there is no access to drain plumbing. Condensate pan must be field installed and requires a dedicated 20 amp, 120 volt circuit.**

#### OPTIONS

- Add suffix "R" for remote system
- Custom exterior colors
- Condensate evaporator drain pan  
*NOTE: Must be field installed and requires a dedicated 20A, 120v circuit.*
- Casters
- Extra lighted shelves (one only)
- Extra non-lighted shelves



# BMOA SERIES

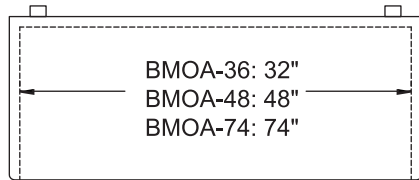
## BOTTOM MOUNT OPEN DISPLAY MERCHANDISERS

### TECHNICAL SPECIFICATIONS

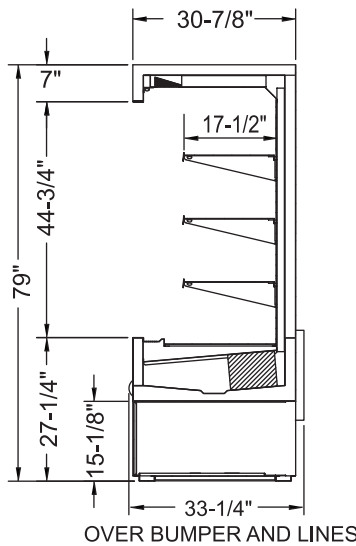
MODEL	DIMENSIONS (in.)			DIMENSIONS (mm)			VOLTS	AMPS**	UNIT H.P.	NO. OF SHELVES	STANDARD SHELF SIZE (in inches)	DISPLAY CU. FT.	TOTAL CU. FT.	SHIP CU. FT.	SHIP WT. LB/KG
	L	D*	H	L	D	H									
BMOA-36	36	33 <sup>1</sup> / <sub>4</sub>	79	914	845	2007	208-230	8.6	1	3	17 <sup>1</sup> / <sub>2</sub> x 31 <sup>1</sup> / <sub>2</sub>	15.8	22.8	92.0	525/239
BMOA-48	52	33 <sup>1</sup> / <sub>4</sub>	79	1321	845	2007	208-230	10.4	1	3	17 <sup>1</sup> / <sub>2</sub> x 47 <sup>1</sup> / <sub>2</sub>	23.7	34.2	117.0	640/291
BMOA-74	78	33 <sup>1</sup> / <sub>4</sub>	79	1981	845	2007	208-230	11.6	1 <sup>1</sup> / <sub>2</sub>	6	17 <sup>1</sup> / <sub>2</sub> x 36 <sup>5</sup> / <sub>8</sub>	36.5	52.7	168.0	860/391

\*Depth includes bumper and lines. \*\*If condensate evaporator pan accessory is used, it must be field installed and requires a dedicated 20 amp, 120 volt circuit.

**Note: 208-230/60/1 also requires neutral and safety ground wire.**

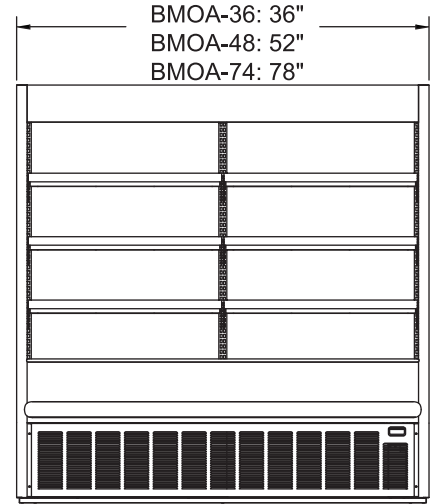


PLAN VIEW



OVER BUMPER AND LINES

SIDE VIEW



ELEVATION VIEW

### LISTINGS



### HOOKUP

Electrical: Via plug in, 9 foot long flexible four wire 208-230v 14/4 cord with neutral and ground wires and molded plug.

Plumbing: Requires connection to customer's drain



NEMA L14-20P

### RECOMMENDED OPERATING CONDITIONS

- Merchandisers designed to hold product in the 34° to 41°F (1° to 5°C) range
- Designed to operate in air-conditioned stores where the maximum temperature is 75°F and the maximum relative humidity is 55%
- Should not be installed in direct sunlight
- Should not be installed near HVAC vents, fans or doorways that will disrupt airflow and compromise the function of the air screen inside the case
- Bottom shelf should not be loaded such that the front air intake is obstructed
- Floor drain should be properly trapped
- Factory installed controls should not be altered, removed or replaced without consent of the factory
- Product must not be displayed in the cold air curtain

### BID SPECIFICATIONS

Item no. BMOA-\_\_\_\_\_  
Provide \_\_\_\_\_ ( ) Bottom Mount Open Display Merchandiser(s), Master-Bilt model no. BMOA-\_\_\_\_\_.

Merchandiser will have interior and exterior textured finish and will feature an electronically controlled monitoring system.

Other features include LED lighting, adjustable two-position shelves, independent shelf lighting and a perforated interior back wall.

The refrigeration system will be self-contained, have a front condenser air intake and rear air discharge and use R-404A re-

frigerant. The temperature range will be 34° to 41°F (1° to 5°C).

Merchandiser to have standard limited three year extended compressor warranty and two year limited parts and labor warranty.

Merchandiser to be UL and C-UL listed and UL EPH classified.



908 Highway 15 North • New Albany, MS 38652  
PHONE: 800-647-1284 or 662-534-9061 • FAX: 800-232-3966 or 662-534-6049 • www.master-bilt.com

All specifications subject to change without notice.

