



FIP-50



## FIP-50 SERIES

### Ice Cream And Novelty Display Merchandiser

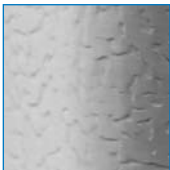
Refrigeration system features low maintenance bare tube condenser coil.



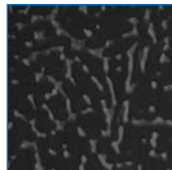
MODEL  
 FIP-50

## FEATURES

### NEW STANDARD TEXTURED FINISH



Standard white



Black also available

#### CONSTRUCTION

- Standard electronic controller with these features:
  - Ability to monitor defrost functions from the front panel interface
  - Audible alarm
  - Eliminates room thermostat, defrost termination/fan delay control, defrost timer and digital thermometer or other temperature indicator
- 24 gauge painted textured steel interior and exterior

- 60" x 19" top stainless steel serving deck
- Extra large, non-fogging front display window
- Four panes of tempered glass with a viewing area of 11.7 sq. ft.
- Removable backlit merchandising sign in stainless steel frame
- Anodized aluminum trim with black vinyl inlay
- Four adjustable heavy-duty, white epoxy-coated, welded wire shelves
- Protective front bumper
- Full length fluorescent lamp
- Automatic condensate evaporator
- Independent on/off light switch
- 2" foamed-in-place "zero ODP" urethane insulation

#### DOORS

- Replaceable magnetic door gasket
- Foamed-in-place rear doors
- Self-closing

#### REFRIGERATION

- Self-contained, semi-hermetic condensing unit

- Rear air intake and discharge
- Automatic defrost
- Refrigerant: R-404A
- No minimum clearance required on cabinet sides but front, back and top must be left open for customer and operator access
- Temperature range: 0° to -20°F (-18° to -29°C)
- R-factor (insulation efficiency rating): 17.24

#### WARRANTY

- Standard limited three year extended compressor and two year limited parts and labor

#### OPTIONS

- Custom colors
- Casters



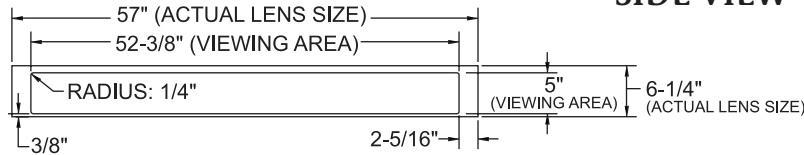
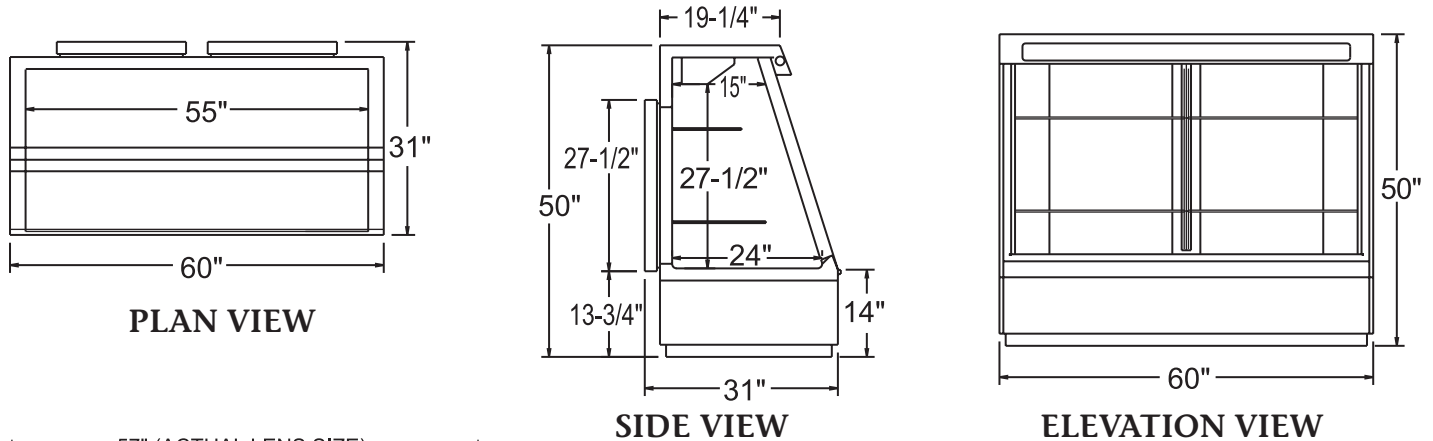
# FIP-50 SERIES

## ICE CREAM AND NOVELTY DISPLAY MERCHANDISER

### TECHNICAL SPECIFICATIONS

| MODEL  | DIMENSIONS (in.) |    |    | DIMENSIONS (mm) |     |      | VOLTS | AMPS | UNIT H.P. | NO. OF SHELVES | STANDARD SHELF SIZE (in inches) | DISPLAY AREA SQ. FT. | CAP. CU. FT. | SHIP CU. FT. | SHIP WT. (LB/KG) |
|--------|------------------|----|----|-----------------|-----|------|-------|------|-----------|----------------|---------------------------------|----------------------|--------------|--------------|------------------|
|        | L                | D  | H  | L               | D   | H    |       |      |           |                |                                 |                      |              |              |                  |
| FIP-50 | 60               | 31 | 50 | 1524            | 787 | 1270 | 115   | 13.4 | 3/4       | 4              | *                               | 18.0                 | 18.1         | 87.0         | 640/291          |

\*Upper right hand and upper left hand shelves measure 12" x 27". Lower right hand and lower left hand shelves measure 15" x 27".



### REMOVABLE LENS DIMENSIONS

### LISTINGS



### HOOKUP

Via plug in, 9 foot long, flexible 3 wire 14/3 cord with molded plug. Twenty amp service is required.



### BID SPECIFICATIONS

Item no. FIP-50  
 Provide \_\_\_\_\_ ( )  
 Low Temp Ice Cream and Novelty Display Merchandiser(s), Master-Bilt model no. FIP-50.  
 Merchandiser to be provided with an electronically controlled monitoring system.  
 Merchandiser to feature textured finish on interior and exterior, 60" x 19" top stainless steel serving deck, extra large non-fogging front display window, four panes of tempered front glass, backlit merchandising sign

in stainless steel frame, anodized aluminum trim with black vinyl inlay, protective front bumper, four adjustable heavy-duty, white epoxy-coated welded wire shelves, and a full length fluorescent lamp.  
 Merchandiser to also have automatic condensate evaporator and independent on/off light switch. Cabinet to be foamed-in-place with "zero ODP" urethane insulation and to have a sparkling white polyester enamel interior and exterior. The doors are to be

self-closing and have magnetic door gaskets. Rear doors are to be foamed-in-place.  
 The refrigeration system is to have a self-contained, semi-hermetic condensing unit using R-404A refrigerant. Refrigeration system will also contain a low maintenance bare tube condenser coil. The temperature range is to be 0° to -20°F (-18° to -29°C).  
 Merchandiser to have standard limited three year extended compressor warranty and two year limited parts and labor warranty. Merchandiser to be UL, C-UL & NSF listed.

**NOTE:** Cabinet designed for optimum performance in air-conditioned area at 75°F ambient and 55% relative humidity. All specifications subject to change without notice.



908 Highway 15 North • New Albany, MS 38652  
 PHONE: 800-647-1284 or 662-534-9061 • FAX: 800-232-3966 or 662-534-6049 • www.master-bilt.com

