



IM SERIES

Outdoor And Indoor Ice Merchandisers

OUTDOOR MODELS

- ☐ IM-38
- ☐ IM-60

INDOOR MODEL

- ☐ IM-45G

FEATURES

CONSTRUCTION

- 24 gauge steel panel construction with anti-sag support channels
- Galvanized steel inner liner
- Baked-on acrylic polyurethane lead-free enamel exterior finish
- Air circulation channels on all four walls
- Floor racks for uniform air circulation
- Top mounted sign
- 2 1/2" foamed-in-place "zero ODP" polyurethane insulation in walls, 3" base insulation
- Replaceable magnetic vinyl gaskets

- Bold product messages on sides and front
- Padlock storage provision on outdoor cabinets
- Interior lighting on indoor cabinets

DOORS

- Outdoor cabinets only:
 - Weather shield above doors
 - Combination door handle and lockplate
 - Self-closing, textured metal access doors
- Indoor cabinet only:
 - Triple pane, self-closing tempered glass door
 - Easy-grip, sculptured door handle

REFRIGERATION

- Refrigerant: R-404A
- Self-contained, top mount refrigeration system
- Temperature range: 20° to 25°F (-7° to -4°C)
- R-factor (insulation efficiency rating): 17.24
- Thermostatically-controlled, automatic condensate evaporator (indoor cabinet only)

WARRANTY

- Standard limited one year parts and labor
- Additional four year coverage on compressor part

OPTIONS

- ☐ Add suffix "-FS" to IM-45G for NSF listed model



IM SERIES

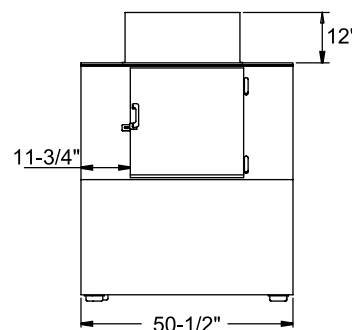
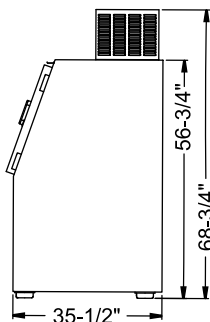
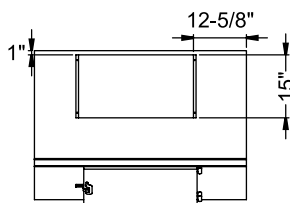
INDOOR AND OUTDOOR ICE MERCHANDISERS

TECHNICAL SPECIFICATIONS

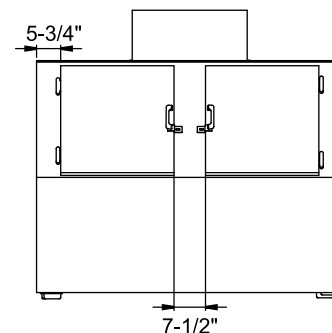
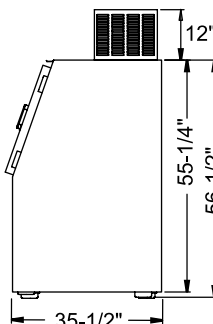
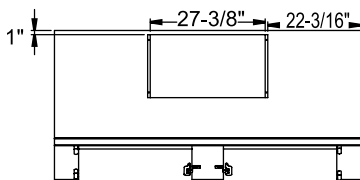
| MODEL | DIMENSIONS (in.) | | | DIMENSIONS (mm) | | | VOLTS | AMPS | UNIT H.P. | CAPACITY 7 LB. BAGS | SHIP CU. FT. | SHIP WT. LB/KG |
|---------|--------------------------------|--------------------------------|--------------------------------|--------------------|-----|------|-------|------|--------------|---------------------------|-----------------|----------------------|
| | L | D | H | L | D | H | | | | | | |
| IM-38 | 50 ¹ / ₂ | 35 ¹ / ₂ | 68 ¹ / ₂ | 1283 | 902 | 1740 | 115 | 7.2 | 1/3 | 130 | 88.6 | 345/157 |
| IM-60 | 73 | 35 ¹ / ₂ | 68 ¹ / ₂ | 1854 | 902 | 1740 | 115 | 7.2 | 1/3 | 210 | 126.6 | 435/198 |
| IM-45G* | 50 ¹ / ₂ | 30 | 76 ¹ / ₂ | 1283 | 762 | 1943 | 115 | 8.3 | 1/3 | 160 | 92.4 | 405/184 |

*Single glass door model for indoor use only.

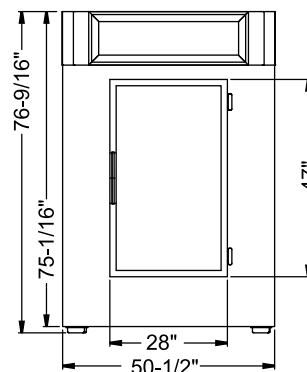
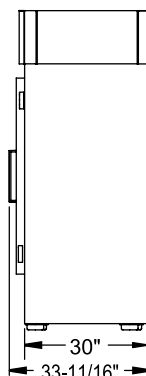
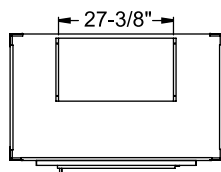
IM-38



IM-60



IM-45G INDOOR MODEL



PLAN VIEW

SIDE VIEW

ELEVATION VIEW



NOTE: All specifications subject to change without notice.

MB MASTER-BILT
Refrigeration Solutions



908 Highway 15 North • New Albany, MS 38652

PHONE: 800-647-1284 or 662-534-9061 • FAX: 800-232-3966 or 662-534-6049 • www.master-bilt.com