



MBGR24HD58 SERIES

Bottom Mounted
Swing Glass Door
Refrigerator



MODEL

☐ MBGR24HD58

FEATURES

CONSTRUCTION

- Galvanized powder coated painted black exterior
- Pre-painted white steel interior
- Electronic control
- Interior LED lighting
- Three adjustable shelves
- High-density, CFC-Free polyurethane insulation

DOORS

- Large low-E double pane tempered thermal glass door
- Self-closing door
- Recessed pocket handle

REFRIGERATION

- Self-contained, factory tested, bottom mounted refrigeration system

- Maintenance-free condenser
- Refrigerant: R134a
- Hot gas condensate evaporation
- Automatic self defrost cycle
- Temperature range 35°F to 38°F (2°C to 3°C)

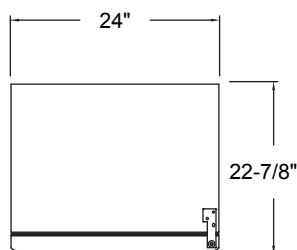
WARRANTY

- **Standard limited three year parts and labor**
- **Additional two year coverage on compressor part**

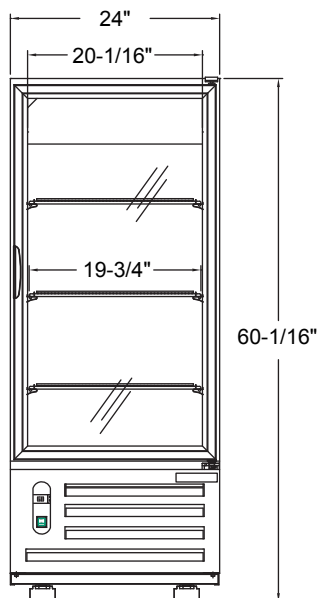
TECHNICAL SPECIFICATIONS

MODEL	DIMENSIONS (in.)			DIMENSIONS (mm)			VOLTS	AMPS	UNIT H.P.	NO. OF DOORS	NO. OF SHELVES	STANDARD SHELF SIZE (in inches)	CAP. CU. FT.	SHIP CU. FT.	SHIP WT. (LB/KG)
	L	D	H*	L	D	H*									
MBGR24HD58	24	22 ⁷ / ₈	60 ¹ / ₁₆	610	560	1526	115	5.7	1/5	1	3	19 ³ / ₄ x 18 ¹ / ₈	7.0	34.47	142/65

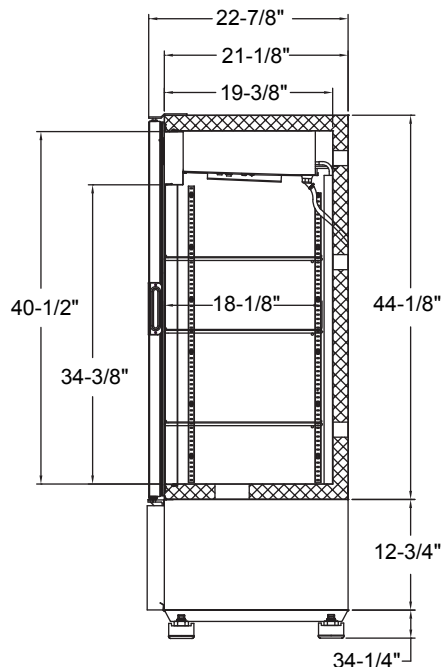
*Height includes adjustable feet.



PLAN VIEW



ELEVATION VIEW



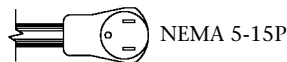
SIDE VIEW

LISTINGS



HOOKUP

Via plug in, 8 ft. long flexible three wire 14/3 cord with molded plug.



BID SPECIFICATIONS

Item no. MBGR24HD58. Provide _____ Bottom Mounted Swing Glass Door Refrigerator, Master-Bilt model no. MBGR24HD58.

Merchandise will feature interior LED lighting and an electronic controller system.

Self-closing door will feature low-energy double pane tempered thermal glass.

The self-contained refrigeration system will be bottom mounted and will feature an automatic self-defrost cycle. Refrigerant will be R-134a. The temperature range will be 35° to 38°F (2° to 3°C).

Merchandise to have standard limited three year parts and labor with additional two year coverage on compressor part.

Merchandise to be ETL listed in the U.S. and Canada and ETL Sanitation listed.

NOTE: Cabinet designed for optimum performance in air-conditioned area at 75°F ambient and 55% relative humidity. All specifications subject to change without notice.